

United States Bankruptcy Court
District of New Mexico

September 2, 2025
CM/ECF Real Time Statistics
August 2025 Report

| Capsule View | Aug 2025 | Jul 2025 | Aug 2024 | % Change | |
|---|------------|------------|----------------------|-----------------|---------------------------|
| | this month | last month | this month last year | from last month | from this month last year |
| Bankruptcies Filed | | | | | |
| Chapter 7 | 107 | 111 | 102 | -3.6% | 4.9% |
| Chapter 11 | 1 | 1 | 0 | 0% | 100% |
| Chapter 12 | 0 | 0 | 0 | 0% | 0% |
| Chapter 13 | 19 | 22 | 13 | -13.64% | 46.15% |
| TOTAL BANKRUPTCY FILINGS | 127 | 134 | 115 | -5.22% | 10.43% |
| Adversaries | | | | | |
| Adversaries Filed | 3 | 5 | 4 | -40% | -25% |
| | | | | | |
| YEAR-TO-DATE | 2025(CY) | 2024(LY) | % Change | | |
| BANKRUPTCIES FILED ² | | | | CY - LY | |
| Chapter 7 | 932 | 786 | 18.58% | | |
| Chapter 11 | 6 | 5 | 20% | | |
| Chapter 12 | 0 | 0 | 0% | | |
| Chapter 13 | 146 | 125 | 16.8% | | |
| <u>TOTAL FILINGS</u> | 1,084 | 916 | 18.34% | | |
| BANKRUPTCIES PENDING ⁽¹⁾⁽²⁾ | | | | | |
| Chapter 7 | 501 | 470 | 6.6% | | |
| Chapter 11 | 12 | 16 | -25% | | |
| Chapter 12 | 2 | 0 | 200% | | |
| Chapter 13 | 535 | 573 | -6.63% | | |
| <u>TOTAL PENDING</u> | 1,050 | 1,059 | -0.85% | | |
| ADVERSARY PROCEEDINGS | | | | | |
| Filed | 30 | 25 | 20% | | |
| <u>TOTAL PENDING¹</u> | 44 | 43 | 2.33% | | |
| | | | | | |
| AVERAGES | | | | | |
| Chapter 7 Average Disposition ³ in Days | 118 | 130 | -9.23% | | |
| Chapter 13 Average Disposition ³ in Days | 1205 | 1221 | -1.31% | | |
| Chapter 13 Average Days to Confirmation | 186 | 147 | 26.53% | | |

1 Pending totals are generated from CM/ECF on a time frame ending on the last day of the month.

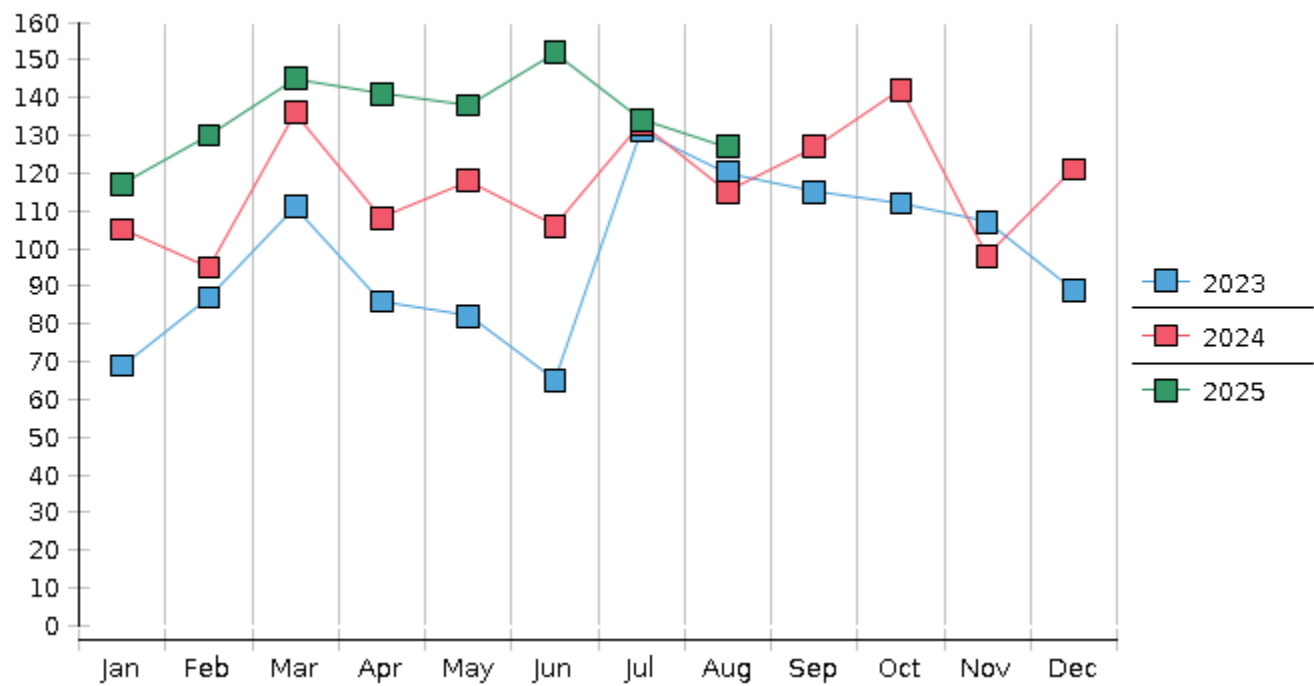
2 Chapter breakdowns are pulled from the Dynamic CM/ECF Database and may change over time due to conversions or other case changes.

3. Average disposition represents number of days from filing to discharge/dismissal of case.

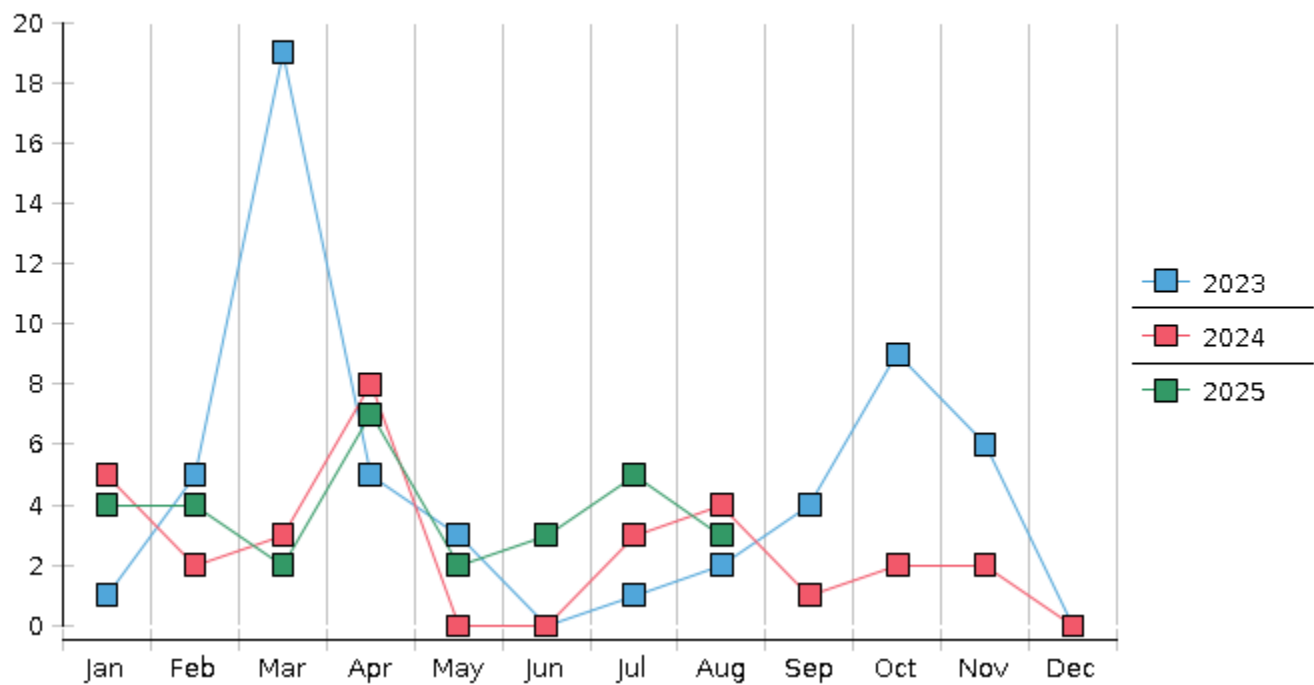
United States Bankruptcy Court - District of New Mexico
Statistics - Year-To-Date Totals

| 2025 | January | February | March | April | May | June | July | August | September | October | November | December | Total YTD |
|---------------------------------|---------------|---------------|---------------|---------------|---------------|--------------|---------------|---------------|-----------|---------|----------|----------|---------------|
| FILED | | | | | | | | | | | | | FILED |
| Chapter 7 Combined | 99 | 117 | 130 | 118 | 121 | 129 | 111 | 107 | | | | | 932 |
| Chapter 11 | 1 | 1 | 0 | 1 | 0 | 1 | 1 | 1 | | | | | 6 |
| Chapter 12 | 0 | 0 | 0 | 0 | 0 | 0 | 0 | 0 | | | | | 0 |
| Chapter 13 | 17 | 12 | 15 | 22 | 17 | 22 | 22 | 19 | | | | | 146 |
| Total Filed for Month | 117 | 130 | 145 | 141 | 138 | 152 | 134 | 127 | | | | | |
| Totals Filed Year-to-Date | 117 | 247 | 392 | 533 | 671 | 823 | 957 | 1084 | | | | | 1084 |
| CLOSED | | | | | | | | | | | | | CLOSED |
| Chapter 7 Combined Total | 126 | 98 | 104 | 69 | 107 | 169 | 112 | 119 | | | | | 904 |
| Asset | 0 | 1 | 0 | 1 | 2 | 2 | 4 | 2 | | | | | 12 |
| No Asset | 126 | 97 | 104 | 68 | 105 | 167 | 108 | 117 | | | | | 892 |
| Chapter 11 | 1 | 0 | 1 | 4 | 1 | 1 | 1 | 3 | | | | | 12 |
| Chapter 12 | 0 | 0 | 0 | 0 | 0 | 0 | 0 | 0 | | | | | 0 |
| Chapter 13 | 15 | 32 | 18 | 14 | 25 | 21 | 15 | 19 | | | | | 159 |
| Totals Closed for Month | 142 | 130 | 123 | 87 | 133 | 191 | 128 | 141 | | | | | |
| Totals Closed Year-to-Date | 142 | 272 | 395 | 482 | 615 | 806 | 934 | 1075 | | | | | 1075 |
| Closing Breakdown | | | | | | | | | | | | | |
| Closed by Case Managers | 34 | 45 | 29 | 32 | 41 | 38 | 29 | 40 | | | | | 288 |
| Closed Automatically | 108 | 85 | 94 | 55 | 92 | 153 | 99 | 101 | | | | | 787 |
| Percent Closed by Case Managers | 23.94% | 34.62% | 23.58% | 36.78% | 30.83% | 19.9% | 22.66% | 28.37% | | | | | 26.79% |
| Percent Closed Automatically | 76.06% | 65.38% | 76.42% | 63.22% | 69.17% | 80.1% | 77.34% | 71.63% | | | | | 73.21% |
| PENDING | | | | | | | | | | | | | |
| Chapter 7 | 432 | 454 | 484 | 535 | 548 | 509 | 511 | 501 | | | | | |
| Chapter 11 | 15 | 16 | 16 | 15 | 14 | 14 | 14 | 12 | | | | | |
| Chapter 12 | 1 | 1 | 1 | 2 | 2 | 2 | 2 | 2 | | | | | |
| Chapter 13 | 552 | 532 | 528 | 535 | 528 | 529 | 535 | 535 | | | | | |
| Total Pending for Month | 1000 | 1003 | 1029 | 1087 | 1092 | 1054 | 1062 | 1050 | | | | | |
| Adversary Proceedings | | | | | | | | | | | | | AP |
| Filed | 4 | 4 | 2 | 7 | 2 | 3 | 5 | 3 | | | | | 30 |
| Closed | 3 | 5 | 2 | 1 | 2 | 2 | 2 | 0 | | | | | 17 |
| Total Adversaries Pending | 32 | 31 | 31 | 37 | 37 | 38 | 41 | 44 | | | | | |

Monthly Bankruptcy Filings



Monthly Adversary Filings



United States Bankruptcy Court - District of New Mexico
Pro Se Filings

| | Jan | Feb | Mar | Apr | May | Jun | Jul | Aug | Sep | Oct | Nov | Dec | YTD Total |
|-------------------------|-------|-------|-------|-------|--------|-------|-------|--------|-------|-------|-------|-------|-----------|
| 2024 | 105 | 95 | 136 | 108 | 118 | 106 | 133 | 115 | 127 | 142 | 98 | 121 | 1,404 |
| pro se 7 | 5 | 7 | 6 | 2 | 7 | 9 | 5 | 8 | 6 | 7 | 7 | 6 | 75 |
| pro se 13 | 4 | 0 | 0 | 1 | 1 | 0 | 5 | 2 | 4 | 2 | 1 | 2 | 22 |
| pro se with BPP | 1 | 2 | 0 | 1 | 2 | 1 | 2 | 1 | 1 | 2 | 0 | 0 | 13 |
| % Of Bankruptcies Filed | 9.52% | 7.37% | 4.41% | 2.78% | 7.63% | 8.49% | 7.52% | 8.7% | 7.87% | 6.34% | 8.16% | 6.61% | 6.91% |
| | | | | | | | | | | | | | |
| 2025 | 117 | 130 | 145 | 141 | 138 | 152 | 134 | 127 | | | | | 1,084 |
| pro se 7 | 8 | 6 | 5 | 6 | 11 | 11 | 7 | 7 | | | | | 61 |
| pro se 13 | 1 | 3 | 3 | 1 | 5 | 3 | 4 | 5 | | | | | 25 |
| pro se with BPP | 1 | 2 | 2 | 1 | 3 | 3 | 2 | 1 | | | | | 15 |
| % Of Bankruptcies Filed | 7.69% | 6.92% | 5.52% | 5.67% | 11.59% | 9.21% | 8.21% | 10.24% | | | | | 7.93% |
| | | | | | | | | | | | | | |
| | Jan | Feb | Mar | Apr | May | Jun | Jul | Aug | Sep | Oct | Nov | Dec | YTD Total |