

United States Bankruptcy Court
District of New Mexico

February 3, 2025
CM/ECF Real Time Statistics
January 2025 Report

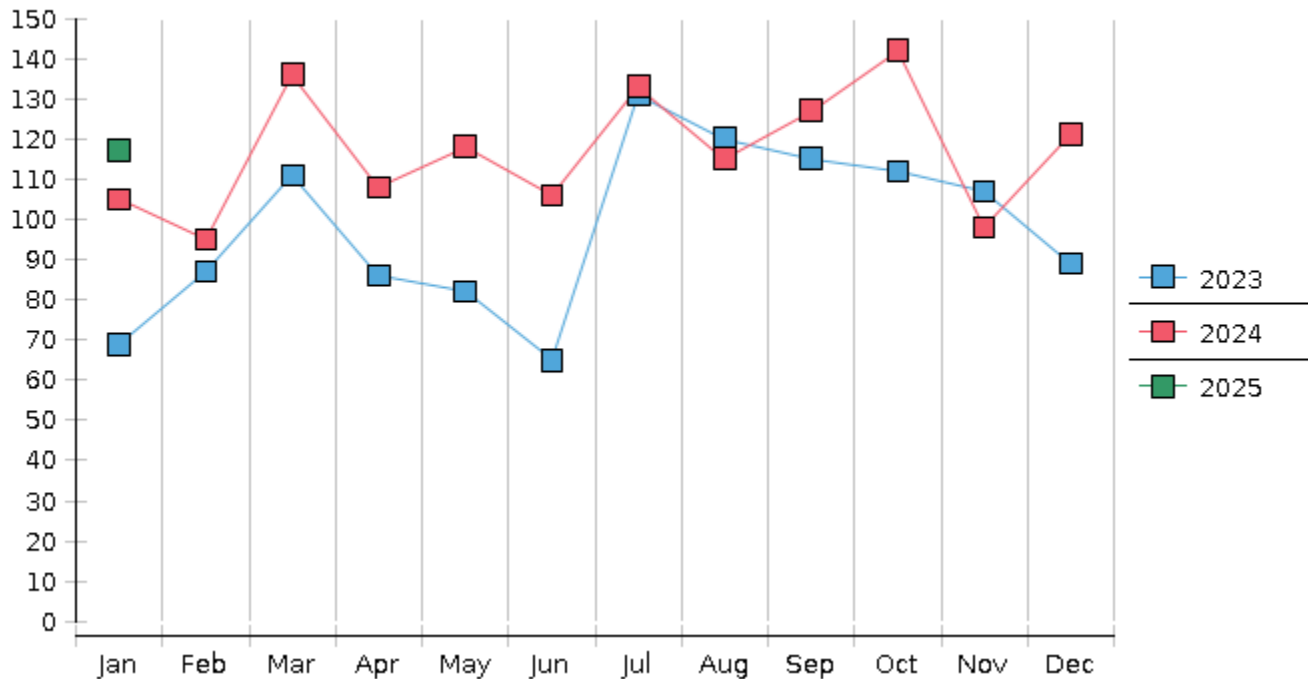
Capsule View	Jan 2025	Dec 2024	Jan 2024	% Change	
	this month	last month	this month last year	from last month	from this month last year
Bankruptcies Filed					
Chapter 7	99	108	92	-8.33%	7.61%
Chapter 11	1	0	1	100%	0%
Chapter 12	0	0	0	0%	0%
Chapter 13	17	13	12	30.77%	41.67%
TOTAL BANKRUPTCY FILINGS	117	121	105	-3.31%	11.43%
Adversaries					
Adversaries Filed	4	0	5	400%	-20%
YEAR-TO-DATE	2025(CY)	2024(LY)	% Change		
BANKRUPTCIES FILED ²			CY - LY		
Chapter 7	99	92	7.61%		
Chapter 11	1	1	0%		
Chapter 12	0	0	0%		
Chapter 13	17	12	41.67%		
<u>TOTAL FILINGS</u>	117	105	11.43%		
BANKRUPTCIES PENDING⁽¹⁾⁽²⁾					
Chapter 7	416	455	-8.57%		
Chapter 11	16	19	-15.79%		
Chapter 12	1	0	100%		
Chapter 13	567	610	-7.05%		
<u>TOTAL PENDING</u>	1,000	1,084	-7.75%		
ADVERSARY PROCEEDINGS					
Filed	4	5	-20%		
<u>TOTAL PENDING¹</u>	32	45	-28.89%		
AVERAGES					
Chapter 7 Average Disposition ³ in Days	116	142	-18.31%		
Chapter 13 Average Disposition ³ in Days	1033	954	8.28%		
Chapter 13 Average Days to Confirmation	180	178	1.12%		

1 Pending totals are generated from CM/ECF on a time frame ending on the last day of the month.

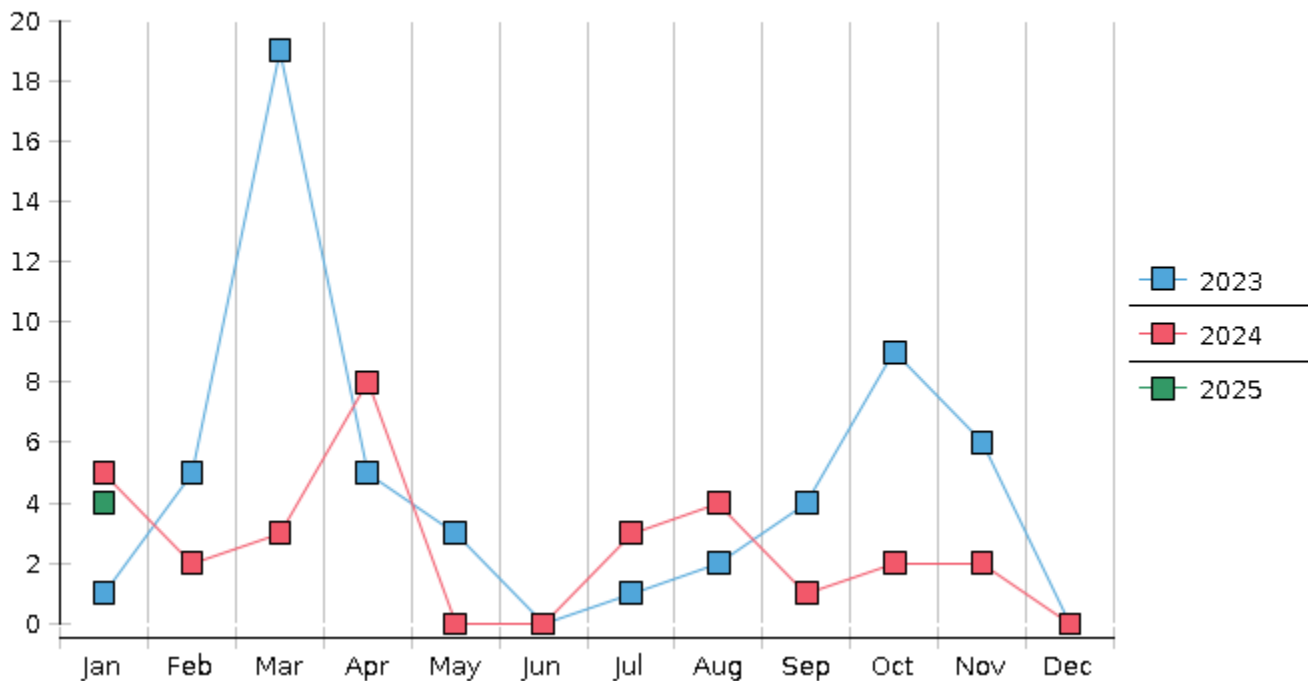
2 Chapter breakdowns are pulled from the Dynamic CM/ECF Database and may change over time due to conversions or other case changes.

3. Average disposition represents number of days from filing to discharge/dismissal of case.

Monthly Bankruptcy Filings



Monthly Adversary Filings



United States Bankruptcy Court - District of New Mexico
 Pro Se Filings

	Jan	Feb	Mar	Apr	May	Jun	Jul	Aug	Sep	Oct	Nov	Dec	YTD Total
2024	105	95	136	108	118	106	133	115	127	142	98	121	1,404
pro se 7	5	7	6	2	7	9	5	8	6	7	7	6	75
pro se 13	4	0	0	1	1	0	5	2	4	2	1	2	22
pro se with BPP	1	2	0	1	2	1	2	1	1	2	0	0	13
% Of Bankruptcies Filed	9.52%	7.37%	4.41%	2.78%	7.63%	8.49%	7.52%	8.7%	7.87%	6.34%	8.16%	6.61%	6.91%
2025	117												117
pro se 7	8												8
pro se 13	1												1
pro se with BPP	1												1
% Of Bankruptcies Filed	7.69%												7.69%
	Jan	Feb	Mar	Apr	May	Jun	Jul	Aug	Sep	Oct	Nov	Dec	YTD Total