

United States Bankruptcy Court  
District of New Mexico

March 2, 2021

CM/ECF Real Time Statistics

**February 2021 Report**

Capsule View	Feb 2021	Jan 2021	Feb 2020	% Change	
	this month	last month	this month last year	from last month	from this month last year
<b>Bankruptcies Filed</b>					
Chapter 7	117	106	197	10.38%	-40.61%
Chapter 11	1	0	1	100%	0%
Chapter 12	0	0	0	0%	0%
Chapter 13	11	7	25	57.14%	-56%
<b>TOTAL BANKRUPTCY FILINGS</b>	129	113	223	14.16%	-42.15%
<b>Adversaries</b>					
Adversaries Filed	5	2	11	150%	-54.55%
<b>YEAR-TO-DATE</b>					
	<b>2021(CY)</b>		<b>2020(LY)</b>	<b>% Change</b>	
<b>BANKRUPTCIES FILED<sup>2</sup></b>				<b>CY - LY</b>	
Chapter 7	223		419	-46.78%	
Chapter 11	1		1	0%	
Chapter 12	0		0	0%	
Chapter 13	18		58	-68.97%	
<b><u>TOTAL FILINGS</u></b>	242		478	-49.37%	
<b>BANKRUPTCIES PENDING<sup>(1)(2)</sup></b>					
Chapter 7	583		966	-39.65%	
Chapter 11	33		33	0%	
Chapter 12	3		3	0%	
Chapter 13	864		867	-0.35%	
<b><u>TOTAL PENDING</u></b>	1,483		1,869	-20.65%	
<b>ADVERSARY PROCEEDINGS</b>					
Filed	7		16	-56.25%	
<b><u>TOTAL PENDING<sup>1</sup></u></b>	88		74	18.92%	
<b>AVERAGES</b>					
Chapter 7 Average Disposition <sup>3</sup> in Days	123		129	-4.65%	
Chapter 13 Average Disposition <sup>3</sup> in Days	1159		817	41.86%	
Chapter 13 Average Days to Confirmation	204		133	53.38%	

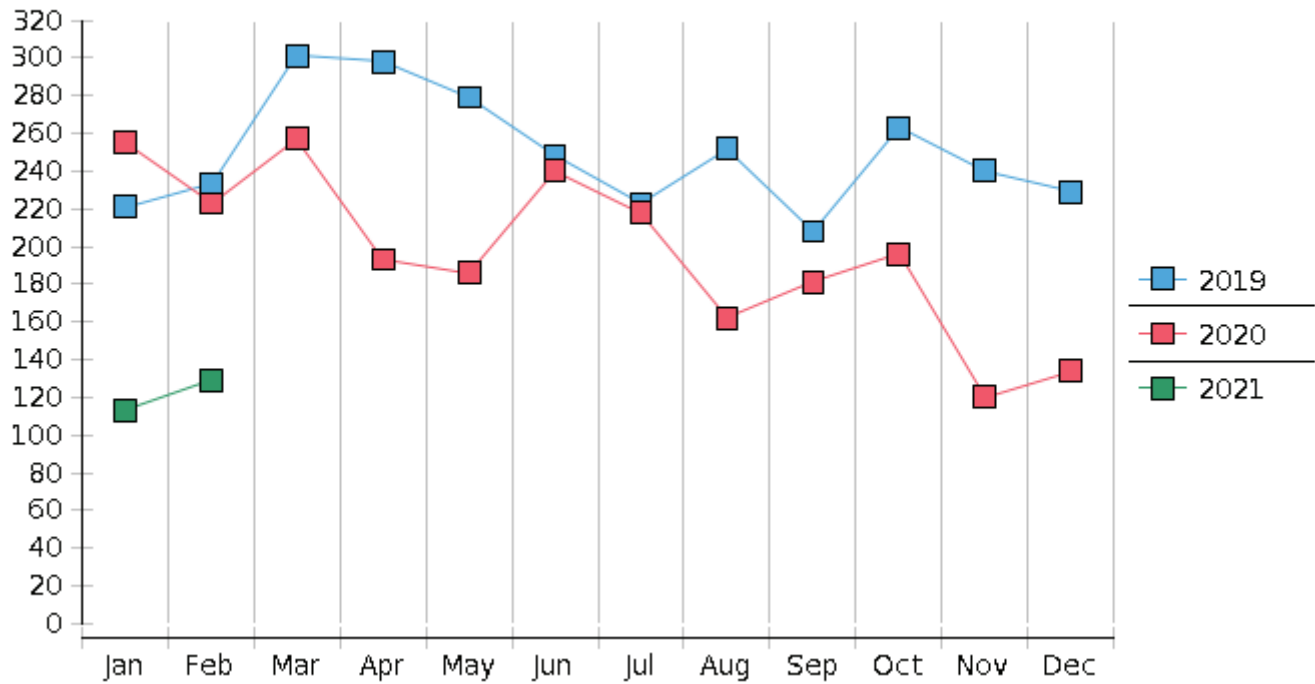
1 Pending totals are generated from CM/ECF on a time frame ending on the last day of the month.

2 Chapter breakdowns are pulled from the Dynamic CM/ECF Database and may change over time due to conversions or other case changes.

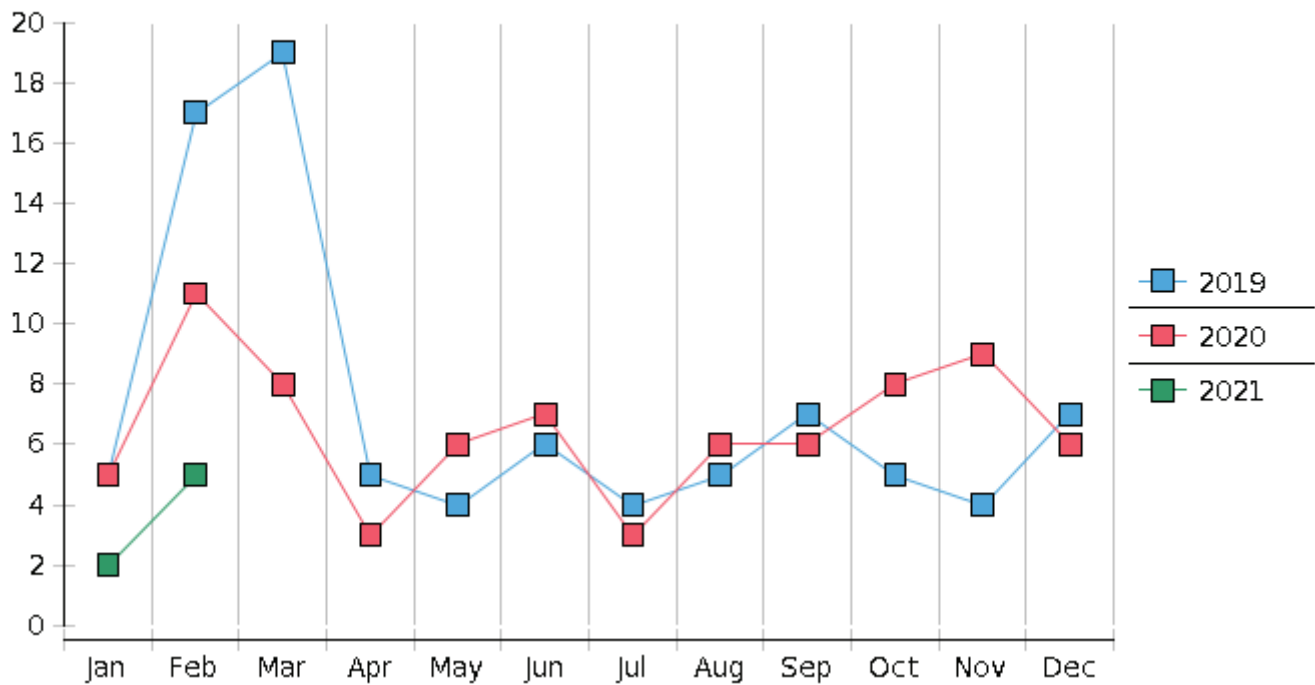
3. Average disposition represents number of days from filing to discharge/dismissal of case.



## Monthly Bankruptcy Filings



## Monthly Adversary Filings



United States Bankruptcy Court - District of New Mexico  
 Pro Se Filings

	Jan	Feb	Mar	Apr	May	Jun	Jul	Aug	Sep	Oct	Nov	Dec	YTD Total
2020	255	223	257	193	186	240	218	162	181	196	120	134	2,365
pro se 7	30	20	26	11	10	20	13	15	10	13	7	11	186
pro se 13	7	4	1	0	1	0	0	0	1	1	0	4	19
pro se with BPP	13	10	15	2	6	14	5	6	6	8	4	4	93
% Of Bankruptcies Filed	14.51%	10.76%	10.51%	5.7%	5.91%	8.33%	5.96%	9.26%	6.63%	7.14%	5.83%	11.19%	8.67%
2021	113	129											242
pro se 7	11	14											25
pro se 13	2	2											4
pro se with BPP	5	10											15
% Of Bankruptcies Filed	11.5%	12.4%											11.98%
	Jan	Feb	Mar	Apr	May	Jun	Jul	Aug	Sep	Oct	Nov	Dec	YTD Total