

United States Bankruptcy Court

District of New Mexico

March 1, 2023

CM/ECF Real Time Statistics

**February 2023 Report**

Capsule View	Feb 2023	Jan 2023	Feb 2022	% Change	
	this month	last month	this month last year	from last month	from this month last year
<b>Bankruptcies Filed</b>					
Chapter 7	70	55	57	27.27%	22.81%
Chapter 11	0	0	0	0%	0%
Chapter 12	0	0	0	0%	0%
Chapter 13	17	14	14	21.43%	21.43%
<b>TOTAL BANKRUPTCY FILINGS</b>	<b>87</b>	<b>69</b>	<b>71</b>	<b>26.09%</b>	<b>22.54%</b>
<b>Adversaries</b>					
Adversaries Filed	5	1	4	400%	25%
<b>YEAR-TO-DATE</b>					
	<b>2023(CY)</b>		<b>2022(LY)</b>	<b>% Change</b>	
<b>BANKRUPTCIES FILED<sup>2</sup></b>				<b>CY - LY</b>	
Chapter 7	125		138	-9.42%	
Chapter 11	0		1	-100%	
Chapter 12	0		0	0%	
Chapter 13	31		28	10.71%	
<b><u>TOTAL FILINGS</u></b>	<b>156</b>		<b>167</b>	<b>-6.59%</b>	
<b>BANKRUPTCIES PENDING<sup>(1)(2)</sup></b>					
Chapter 7	407		520	-21.73%	
Chapter 11	20		26	-23.08%	
Chapter 12	0		0	0%	
Chapter 13	676		743	-9.02%	
<b><u>TOTAL PENDING</u></b>	<b>1,103</b>		<b>1,289</b>	<b>-14.43%</b>	
<b>ADVERSARY PROCEEDINGS</b>					
Filed	6		6	0%	
<b><u>TOTAL PENDING<sup>1</sup></u></b>	<b>43</b>		<b>50</b>	<b>-14%</b>	
<b>AVERAGES</b>					
Chapter 7 Average Disposition <sup>3</sup> in Days	183		132	38.64%	
Chapter 13 Average Disposition <sup>3</sup> in Days	1169		1229	-4.88%	
Chapter 13 Average Days to Confirmation	127		184	-30.98%	

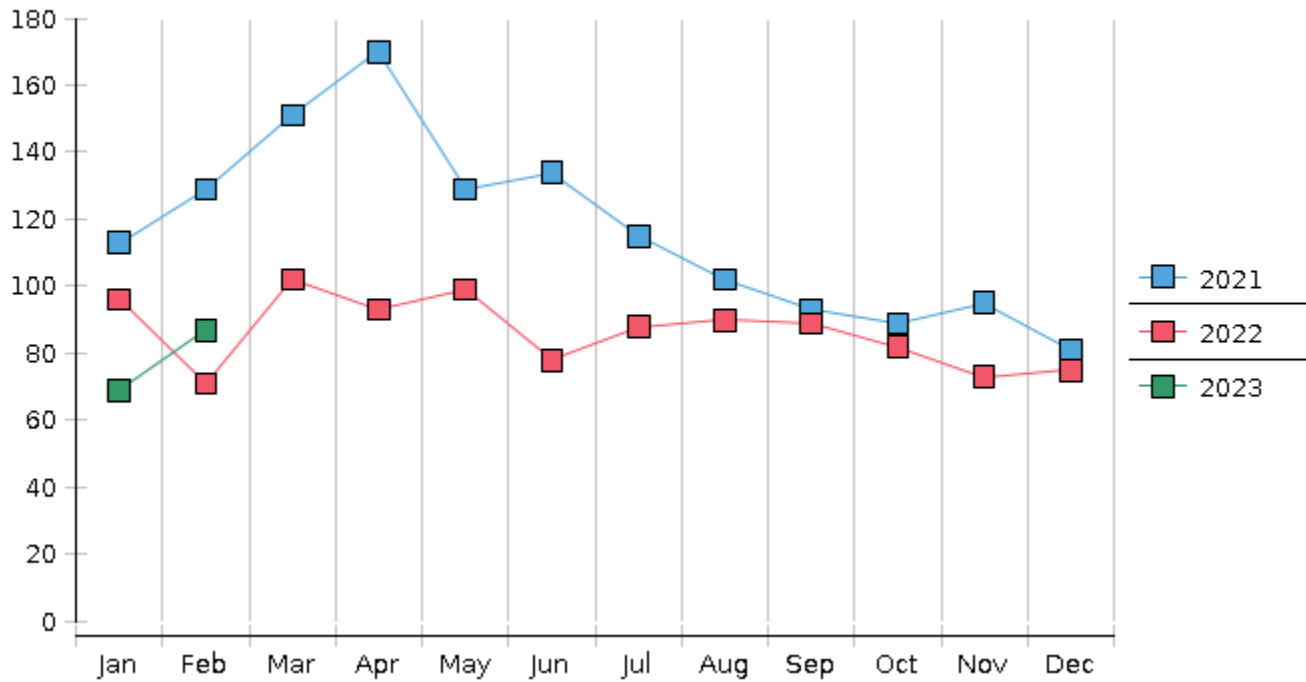
1 Pending totals are generated from CM/ECF on a time frame ending on the last day of the month.

2 Chapter breakdowns are pulled from the Dynamic CM/ECF Database and may change over time due to conversions or other case changes.

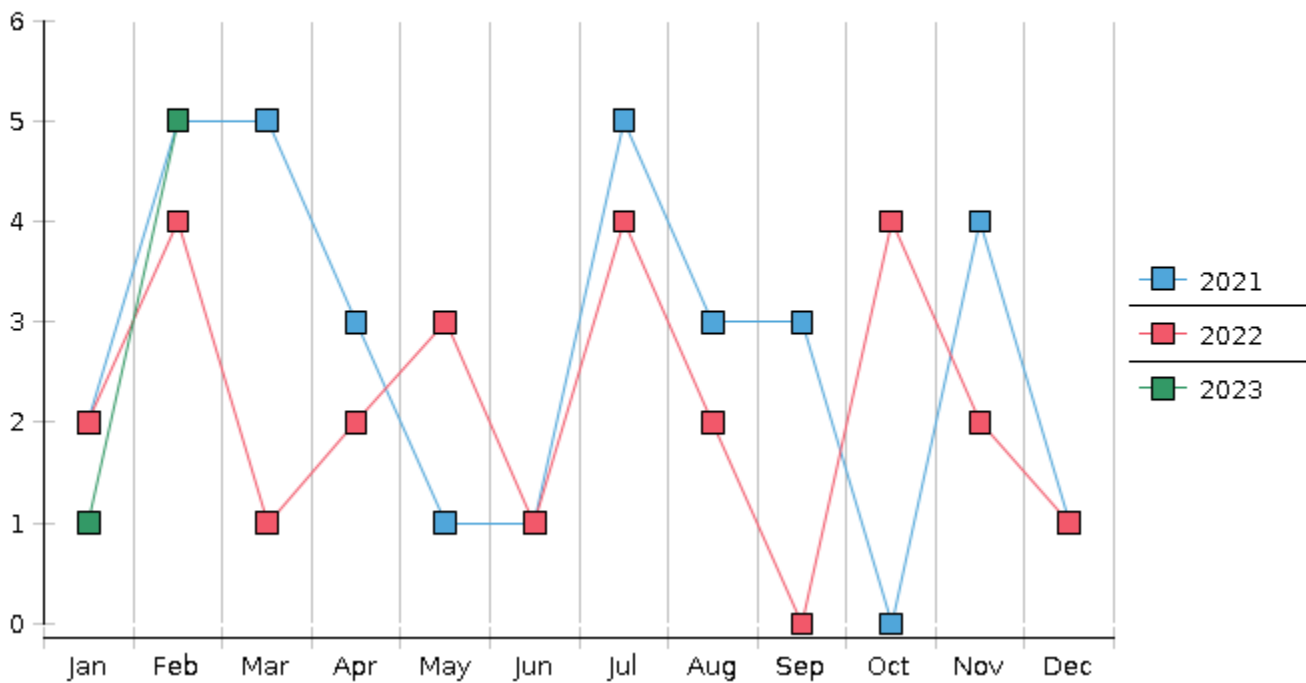
3. Average disposition represents number of days from filing to discharge/dismissal of case.



### Monthly Bankruptcy Filings



### Monthly Adversary Filings



United States Bankruptcy Court - District of New Mexico  
 Pro Se Filings

	Jan	Feb	Mar	Apr	May	Jun	Jul	Aug	Sep	Oct	Nov	Dec	YTD Total
2022	96	71	102	93	99	78	88	90	89	82	73	75	1,036
pro se 7	8	1	2	6	5	3	5	8	3	5	3	10	59
pro se 13	2	1	0	2	3	4	2	1	0	0	3	2	20
pro se with BPP	5	1	0	0	2	0	3	3	1	2	0	1	18
% Of Bankruptcies Filed	10.42%	2.82%	1.96%	8.6%	8.08%	8.97%	7.95%	10%	3.37%	6.1%	8.22%	16%	7.63%
2023	69	87											156
pro se 7	6	5											11
pro se 13	0	1											1
pro se with BPP	1	1											2
% Of Bankruptcies Filed	8.7%	6.9%											7.69%
	Jan	Feb	Mar	Apr	May	Jun	Jul	Aug	Sep	Oct	Nov	Dec	YTD Total