

United States Bankruptcy Court
District of New Mexico

September 3, 2024
CM/ECF Real Time Statistics
August 2024 Report

Capsule View	Aug 2024	Jul 2024	Aug 2023	% Change	
	this month	last month	this month last year	from last month	from this month last year
Bankruptcies Filed					
Chapter 7	102	111	100	-8.11%	2%
Chapter 11	0	1	1	-100%	-100%
Chapter 12	0	0	0	0%	0%
Chapter 13	13	21	19	-38.1%	-31.58%
TOTAL BANKRUPTCY FILINGS	115	133	120	-13.53%	-4.17%
Adversaries					
Adversaries Filed	4	3	2	33.33%	100%
YEAR-TO-DATE	2024(CY)	2023(LY)	% Change		
BANKRUPTCIES FILED ²				CY - LY	
Chapter 7	786	615	27.8%		
Chapter 11	5	4	25%		
Chapter 12	0	0	0%		
Chapter 13	125	132	-5.3%		
<u>TOTAL FILINGS</u>	916	751	21.97%		
BANKRUPTCIES PENDING⁽¹⁾⁽²⁾					
Chapter 7	449	469	-4.26%		
Chapter 11	17	18	-5.56%		
Chapter 12	0	0	0%		
Chapter 13	593	630	-5.87%		
<u>TOTAL PENDING</u>	1,059	1,117	-5.19%		
ADVERSARY PROCEEDINGS					
Filed	25	36	-30.56%		
<u>TOTAL PENDING¹</u>	43	37	16.22%		
AVERAGES					
Chapter 7 Average Disposition ³ in Days	130	160	-18.75%		
Chapter 13 Average Disposition ³ in Days	1221	1204	1.41%		
Chapter 13 Average Days to Confirmation	147	142	3.52%		

1 Pending totals are generated from CM/ECF on a time frame ending on the last day of the month.

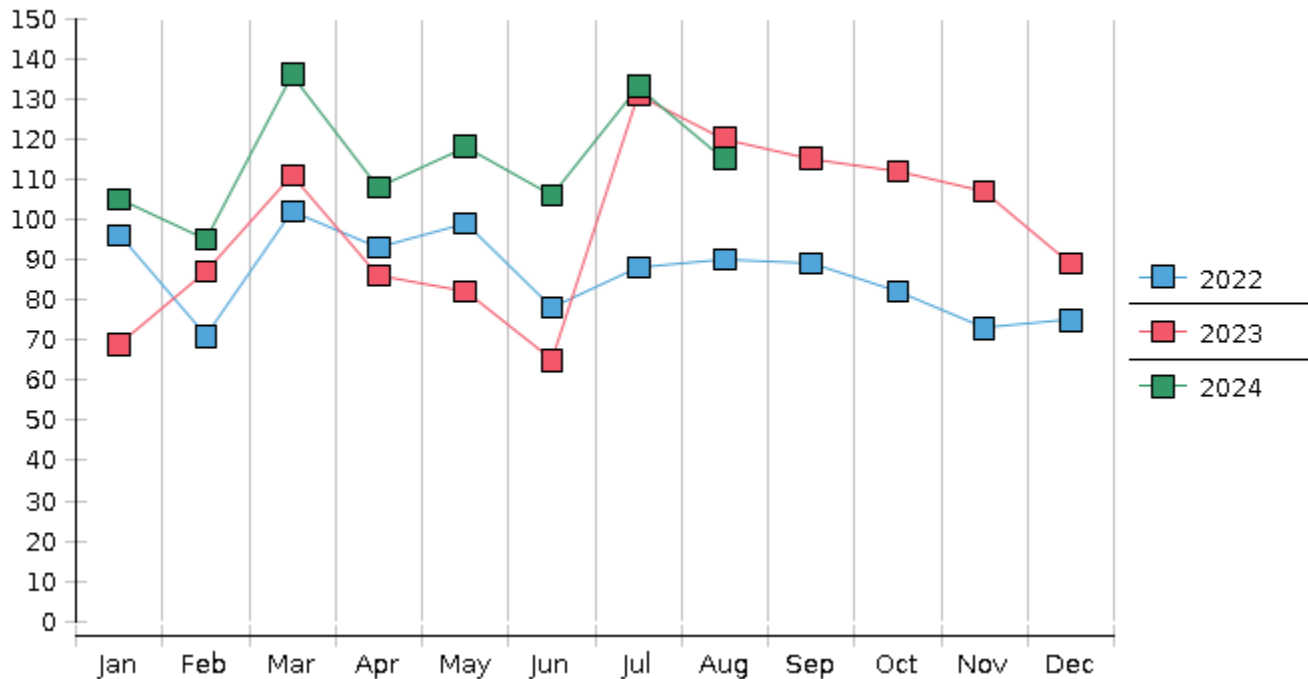
2 Chapter breakdowns are pulled from the Dynamic CM/ECF Database and may change over time due to conversions or other case changes.

3. Average disposition represents number of days from filing to discharge/dismissal of case.

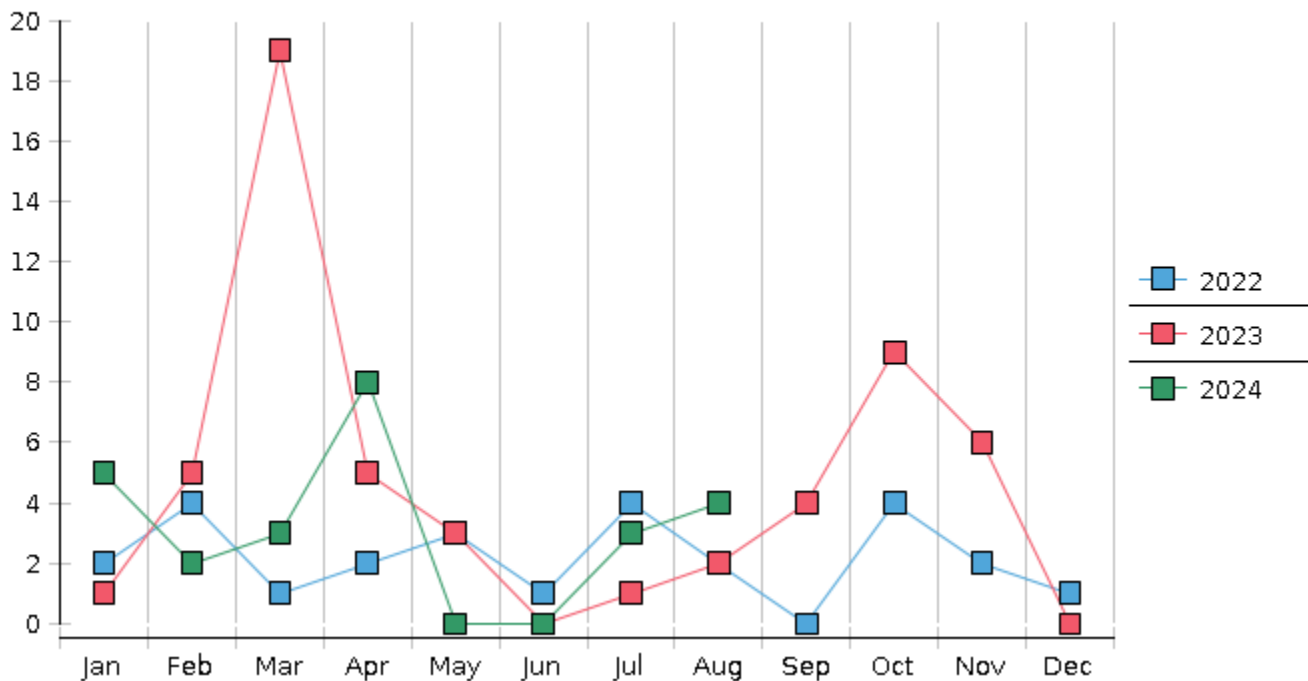
United States Bankruptcy Court - District of New Mexico
 Statistics - Year-To-Date Totals

2024	January	February	March	April	May	June	July	August	September	October	November	December	Total YTD
FILED													FILED
Chapter 7 Combined	92	86	117	92	96	90	111	102					786
Chapter 11	1	1	0	1	1	0	1	0					5
Chapter 12	0	0	0	0	0	0	0	0					0
Chapter 13	12	8	19	15	21	16	21	13					125
Total Filed for Month	105	95	136	108	118	106	133	115					
Totals Filed Year-to-Date	105	200	336	444	562	668	801	916					916
CLOSED													CLOSED
Chapter 7 Combined Total	131	96	97	84	104	100	134	84					830
Asset	7	6	5	7	13	4	3	3					48
No Asset	124	90	92	77	91	96	131	81					782
Chapter 11	1	0	0	1	1	1	2	1					7
Chapter 12	0	0	0	0	0	0	0	0					0
Chapter 13	15	26	15	19	23	25	16	13					152
Totals Closed for Month	147	122	112	104	128	126	152	98					
Totals Closed Year-to-Date	147	269	381	485	613	739	891	989					989
Closing Breakdown													
Closed by Case Managers	30	42	38	40	49	40	34	27					300
Closed Automatically	117	80	74	64	79	86	118	71					689
Percent Closed by Case Managers	20.41%	34.43%	33.93%	38.46%	38.28%	31.75%	22.37%	27.55%					30.33%
Percent Closed Automatically	79.59%	65.57%	66.07%	61.54%	61.72%	68.25%	77.63%	72.45%					69.67%
PENDING													
Chapter 7	450	440	459	468	461	451	429	449					
Chapter 11	19	20	20	20	20	19	18	17					
Chapter 12	0	0	0	0	0	0	0	0					
Chapter 13	615	597	602	599	598	589	594	593					
Total Pending for Month	1084	1057	1081	1087	1079	1059	1041	1059					
Adversary Proceedings													AP
Filed	5	2	3	8	0	0	3	4					25
Closed	3	3	7	5	3	2	1	2					26
Total Adversaries Pending	45	45	41	44	41	39	41	43					

Monthly Bankruptcy Filings



Monthly Adversary Filings



United States Bankruptcy Court - District of New Mexico
 Pro Se Filings

	Jan	Feb	Mar	Apr	May	Jun	Jul	Aug	Sep	Oct	Nov	Dec	YTD Total
2023	69	87	111	86	82	65	131	120	115	112	107	89	1,174
pro se 7	6	5	3	5	7	2	6	6	10	6	6	4	66
pro se 13	0	1	4	2	2	1	0	2	2	2	2	3	21
pro se with BPP	1	1	0	2	2	0	2	0	2	2	0	1	13
% Of Bankruptcies Filed	8.7%	6.9%	6.31%	8.14%	10.98%	4.62%	4.58%	6.67%	10.43%	7.14%	7.48%	7.87%	7.41%
2024	105	95	136	108	118	106	133	115					916
pro se 7	5	7	6	2	7	9	5	8					49
pro se 13	4	0	0	1	1	0	5	2					13
pro se with BPP	1	2	0	1	2	1	2	1					10
% Of Bankruptcies Filed	9.52%	7.37%	4.41%	2.78%	7.63%	8.49%	7.52%	8.7%					6.77%
	Jan	Feb	Mar	Apr	May	Jun	Jul	Aug	Sep	Oct	Nov	Dec	YTD Total