

Clerk of Court Report BLS Year in Review

Norman H. Meyer, Jr.

Clerk of Court

March 6, 2015

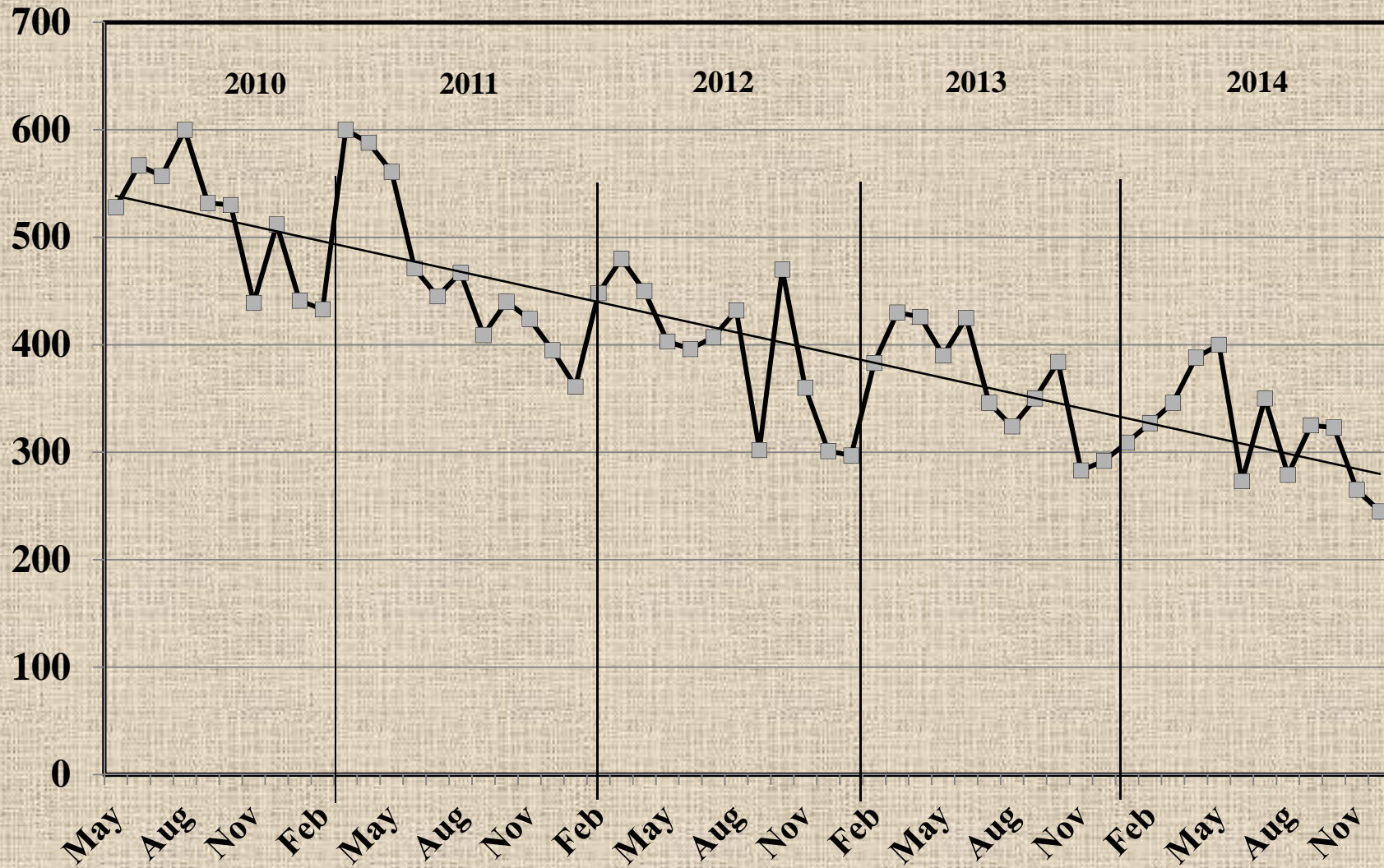


Today's topics:

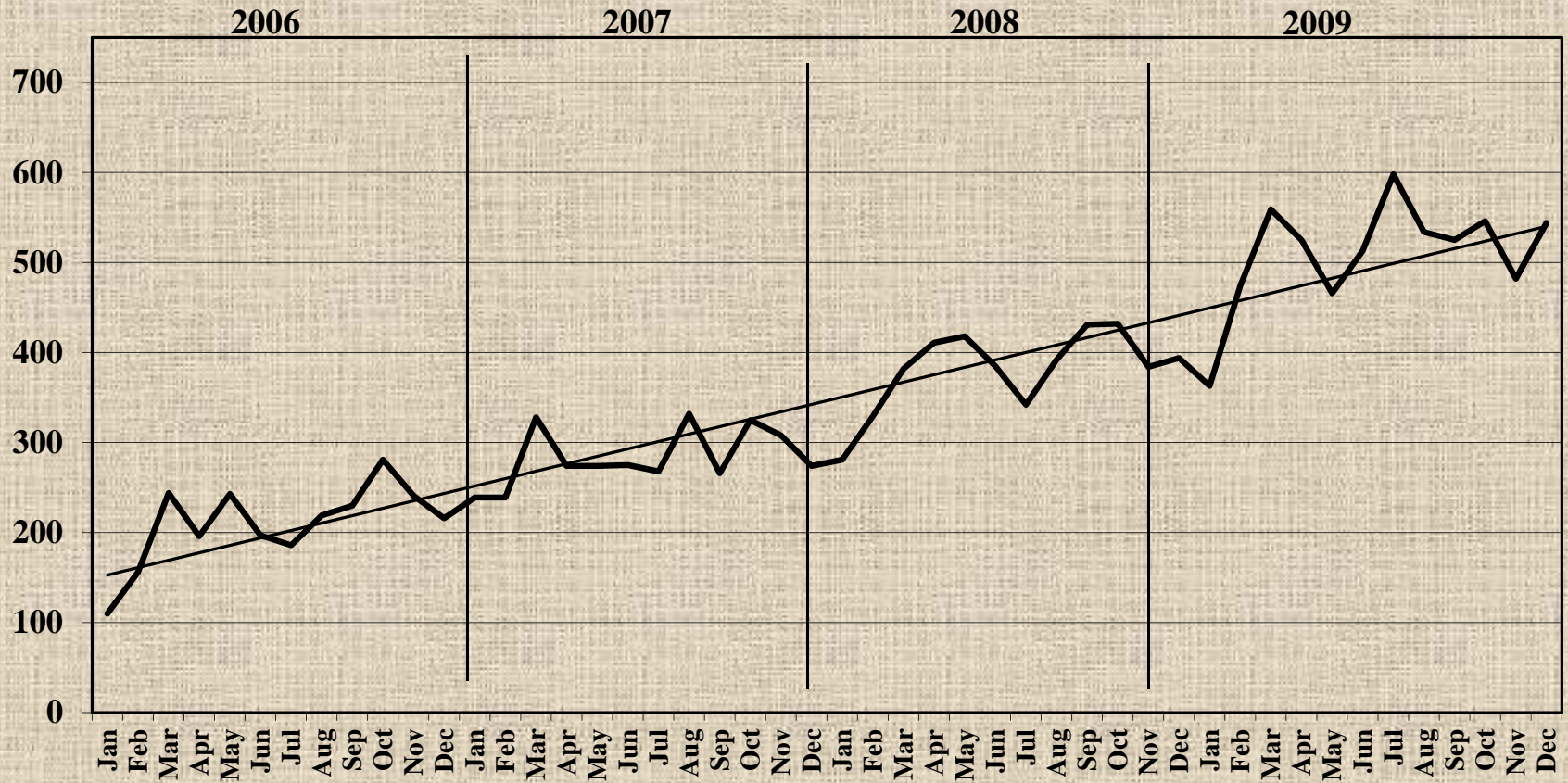
- **Statistics**
- **Lomas Move**
- **Practice Tips**
- **Questions**



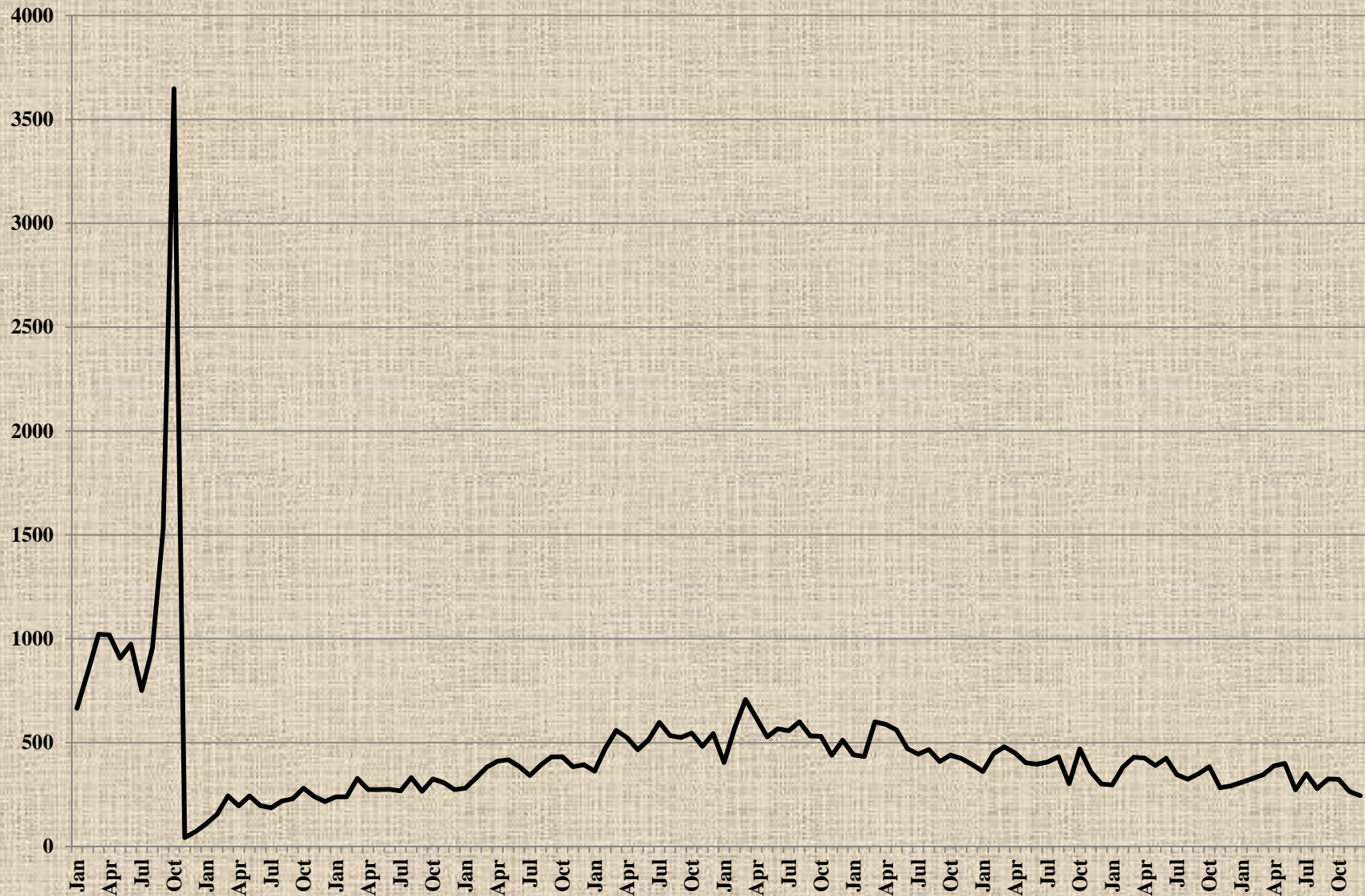
New Mexico Bankruptcy Filings Jan 2010 – Dec 2014



New Mexico Bankruptcy Filings Jan 2006 – Dec 2009



New Mexico Bankruptcy Filings Jan 2004 – Dec 2014



Pro Se Bankruptcy Cases

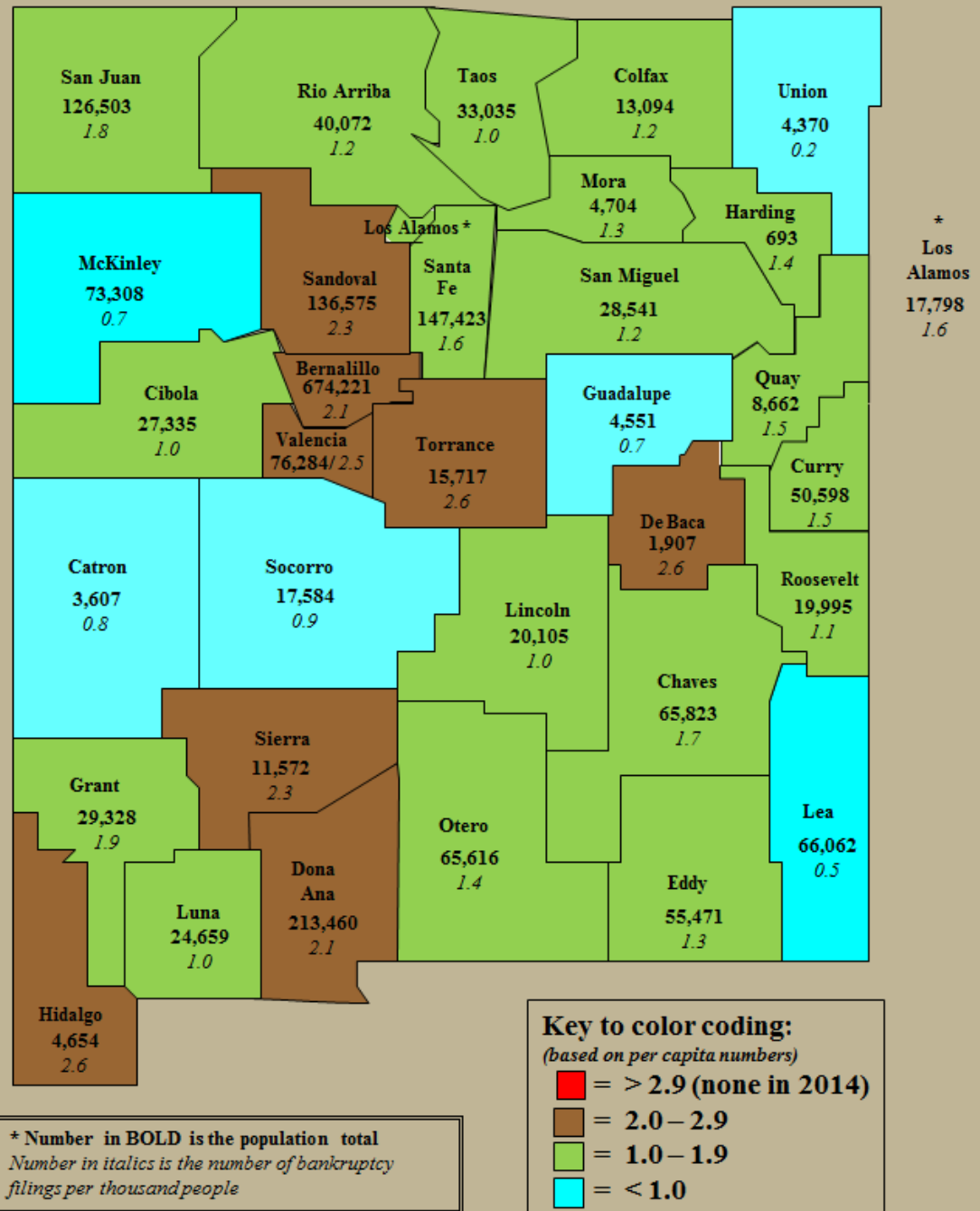
	Jan	Feb	March	April	May	June	July	August	Sept	Oct	Nov	Dec	Year %
2012	361	448	480	450	403	396	407	432	302	470	360	302	4,811
pro se	40	49	44	41	46	47	37	45	38	48	41	40	516
%	11.1%	10.9%	9.2%	9.1%	11.4%	11.9%	9.1%	10.4%	12.6%	10.2%	11.4%	13.2%	10.7%
2013	297	383	430	426	390	425	346	324	350	384	283	292	4,330
pro se	34	37	58	42	42	28	43	43	56	45	34	36	498
%	11.4%	9.7%	13.5%	9.9%	10.8%	6.6%	12.4%	13.3%	16.0%	11.7%	12.0%	12.3%	11.5%
2014	309	327	346	388	400	273	350	279	325	323	265	245	3,830
pro se	39	44	34	40	40	28	41	36	40	41	37	37	457
%	12.6%	13.5%	9.8%	10.3%	10.0%	10.3%	11.7%	12.9%	12.3%	12.7%	14.0%	15.1%	11.9%

District of New Mexico County Population and Bankruptcy Filings

*Population estimates
obtained from U.S. Census
Bureau web site*

Filings based on 2014 data

*Italicized numbers
are per capita
bankruptcy filings**






Reminders....

- **The B22 forms changed on Dec 1, 2014. Be sure you use the new forms.**
- **The signature pages changed Dec 1, 2014. Be sure you use the new signature page.**
- **Who has access to your electronic filing account? Change your password regularly and make sure only authorized users use your account.**

Questions?





THANK
YOU !

