

United States Bankruptcy Court
District of New Mexico

November 1, 2024
CM/ECF Real Time Statistics
October 2024 Report

Capsule View	Oct 2024	Sep 2024	Oct 2023	% Change	
	this month	last month	this month last year	from last month	from this month last year
Bankruptcies Filed					
Chapter 7	119	113	95	5.31%	25.26%
Chapter 11	0	0	3	0%	-300%
Chapter 12	0	0	0	0%	0%
Chapter 13	23	14	14	64.29%	64.29%
TOTAL BANKRUPTCY FILINGS	142	127	112	11.81%	26.79%
Adversaries					
Adversaries Filed	2	1	9	100%	-77.78%
YEAR-TO-DATE					
	2024(CY)		2023(LY)	% Change	
BANKRUPTCIES FILED²				CY - LY	
Chapter 7	1,018		808	25.99%	
Chapter 11	5		7	-28.57%	
Chapter 12	0		0	0%	
Chapter 13	162		163	-0.61%	
<u>TOTAL FILINGS</u>	1,185		978	21.17%	
BANKRUPTCIES PENDING⁽¹⁾⁽²⁾					
Chapter 7	479		493	-2.84%	
Chapter 11	14		18	-22.22%	
Chapter 12	0		0	0%	
Chapter 13	582		624	-6.73%	
<u>TOTAL PENDING</u>	1,075		1,135	-5.29%	
ADVERSARY PROCEEDINGS					
Filed	28		49	-42.86%	
<u>TOTAL PENDING¹</u>	42		42	0%	
AVERAGES					
Chapter 7 Average Disposition ³ in Days	128		154	-16.88%	
Chapter 13 Average Disposition ³ in Days	1222		1198	2%	
Chapter 13 Average Days to Confirmation	157		152	3.29%	

1 Pending totals are generated from CM/ECF on a time frame ending on the last day of the month.

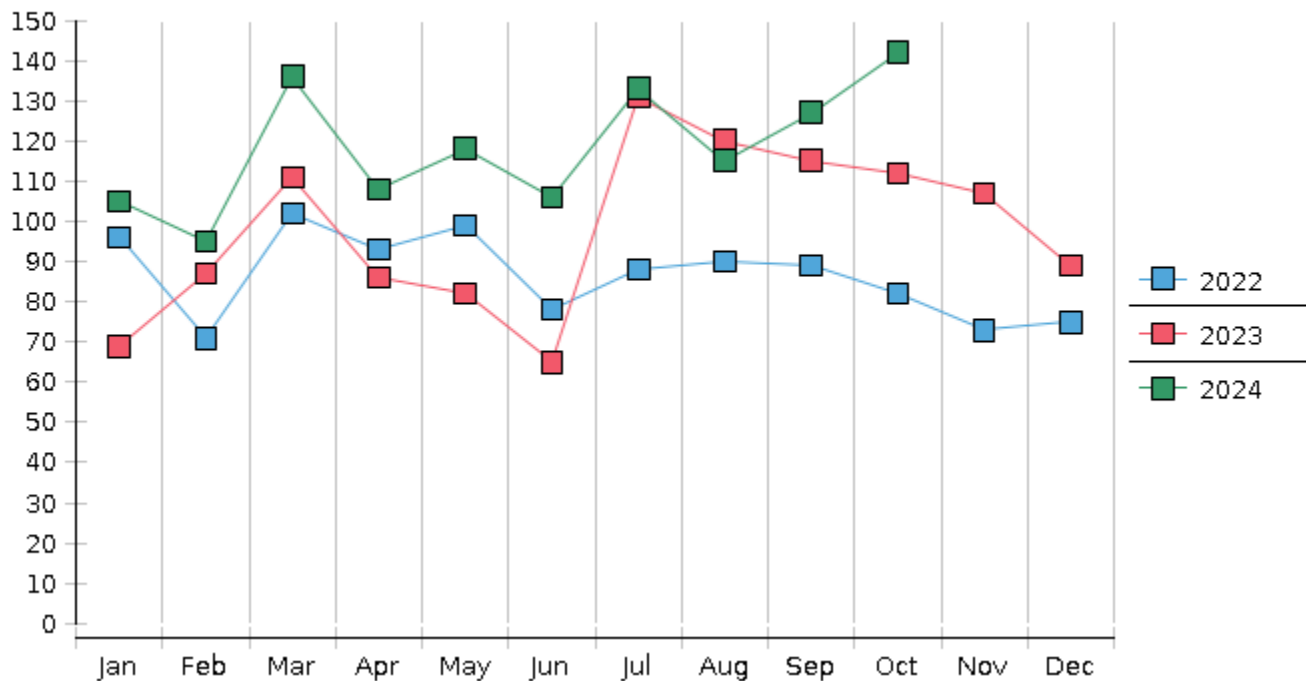
2 Chapter breakdowns are pulled from the Dynamic CM/ECF Database and may change over time due to conversions or other case changes.

3. Average disposition represents number of days from filing to discharge/dismissal of case.

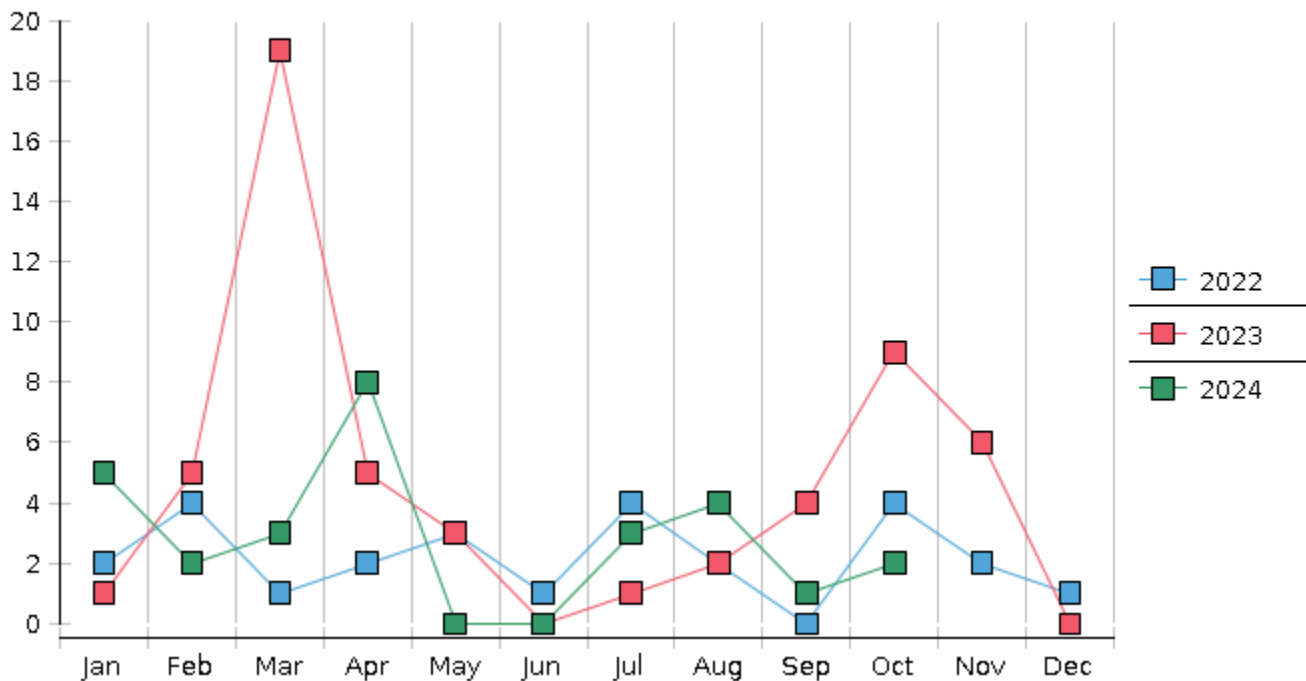
United States Bankruptcy Court - District of New Mexico
 Statistics - Year-To-Date Totals

2024	January	February	March	April	May	June	July	August	September	October	November	December	Total YTD
FILED													FILED
Chapter 7 Combined	92	86	117	92	96	90	111	102	113	119			1018
Chapter 11	1	1	0	1	1	0	1	0	0	0			5
Chapter 12	0	0	0	0	0	0	0	0	0	0			0
Chapter 13	12	8	19	15	21	16	21	13	14	23			162
Total Filed for Month	105	95	136	108	118	106	133	115	127	142			
Totals Filed Year-to-Date	105	200	336	444	562	668	801	916	1043	1185			1185
CLOSED													CLOSED
Chapter 7 Combined Total	131	96	97	84	104	100	134	84	129	80			1039
Asset	7	6	5	7	13	4	3	3	4	3			55
No Asset	124	90	92	77	91	96	131	81	125	77			984
Chapter 11	1	0	0	1	1	1	2	1	2	1			10
Chapter 12	0	0	0	0	0	0	0	0	0	0			0
Chapter 13	15	26	15	19	23	25	16	13	25	19			196
Totals Closed for Month	147	122	112	104	128	126	152	98	156	100			
Totals Closed Year-to-Date	147	269	381	485	613	739	891	989	1145	1245			1245
Closing Breakdown													
Closed by Case Managers	30	42	38	40	49	40	34	27	40	30			370
Closed Automatically	117	80	74	64	79	86	118	71	116	70			875
Percent Closed by Case Managers	20.41%	34.43%	33.93%	38.46%	38.28%	31.75%	22.37%	27.55%	25.64%	30.0%			29.72%
Percent Closed Automatically	79.59%	65.57%	66.07%	61.54%	61.72%	68.25%	77.63%	72.45%	74.36%	70.0%			70.28%
PENDING													
Chapter 7	451	442	463	472	465	455	433	453	439	479			
Chapter 11	19	20	20	20	20	19	18	17	15	14			
Chapter 12	0	0	0	0	0	0	0	0	0	0			
Chapter 13	614	595	598	595	594	585	590	589	578	582			
Total Pending for Month	1084	1057	1081	1087	1079	1059	1041	1059	1032	1075			
Adversary Proceedings													AP
Filed	5	2	3	8	0	0	3	4	1	2			28
Closed	3	3	7	5	3	2	1	2	3	1			30
Total Adversaries Pending	45	45	41	44	41	39	41	43	41	42			

Monthly Bankruptcy Filings



Monthly Adversary Filings



United States Bankruptcy Court - District of New Mexico
Pro Se Filings

	Jan	Feb	Mar	Apr	May	Jun	Jul	Aug	Sep	Oct	Nov	Dec	YTD Total
2023	69	87	111	86	82	65	131	120	115	112	107	89	1,174
pro se 7	6	5	3	5	7	2	6	6	10	6	6	4	66
pro se 13	0	1	4	2	2	1	0	2	2	2	2	3	21
pro se with BPP	1	1	0	2	2	0	2	0	2	2	0	1	13
% Of Bankruptcies Filed	8.7%	6.9%	6.31%	8.14%	10.98%	4.62%	4.58%	6.67%	10.43%	7.14%	7.48%	7.87%	7.41%
2024	105	95	136	108	118	106	133	115	127	142			1,185
pro se 7	5	7	6	2	7	9	5	8	6	7			62
pro se 13	4	0	0	1	1	0	5	2	4	2			19
pro se with BPP	1	2	0	1	2	1	2	1	1	2			13
% Of Bankruptcies Filed	9.52%	7.37%	4.41%	2.78%	7.63%	8.49%	7.52%	8.7%	7.87%	6.34%			6.84%
	Jan	Feb	Mar	Apr	May	Jun	Jul	Aug	Sep	Oct	Nov	Dec	YTD Total