

United States Bankruptcy Court

District of New Mexico

August 1, 2018

CM/ECF Real Time Statistics

July 2018 Report

Capsule View	Jul 2018	Jun 2018	Jul 2017	% Change	
	this month	last month	this month last year	from last month	from this month last year
Bankruptcies Filed					
Chapter 7	211	254	226	-16.93%	-6.64%
Chapter 11	2	1	1	100%	100%
Chapter 12	0	0	0	0%	0%
Chapter 13	28	41	28	-31.71%	0%
TOTAL BANKRUPTCY FILINGS	241	296	255	-18.58%	-5.49%
Adversaries					
Adversaries Filed	5	9	8	-44.44%	-37.5%
YEAR-TO-DATE					
	2018(CY)		2017(LY)	% Change	
BANKRUPTCIES FILED²				CY - LY	
Chapter 7	1,704		1,794	-5.02%	
Chapter 11	11		19	-42.11%	
Chapter 12	0		2	-200%	
Chapter 13	214		177	20.9%	
TOTAL FILINGS	1,929		1,992	-3.16%	
BANKRUPTCIES PENDING⁽¹⁾⁽²⁾					
Chapter 7	1,032		1,120	-7.86%	
Chapter 11	68		71	-4.23%	
Chapter 12	6		7	-14.29%	
Chapter 13	845		770	9.74%	
TOTAL PENDING	1,951		1,968	-0.86%	
ADVERSARY PROCEEDINGS					
Filed	45		59	-23.73%	
TOTAL PENDING¹	120		133	-9.77%	
AVERAGES					
Chapter 7 Average Disposition ³ in Days	118		124	-4.84%	
Chapter 13 Average Disposition ³ in Days	1046		1061	-1.41%	
Chapter 13 Average Days to Confirmation	129		121	6.61%	

1 Pending totals are generated from CM/ECF on a time frame ending on the last day of the month.

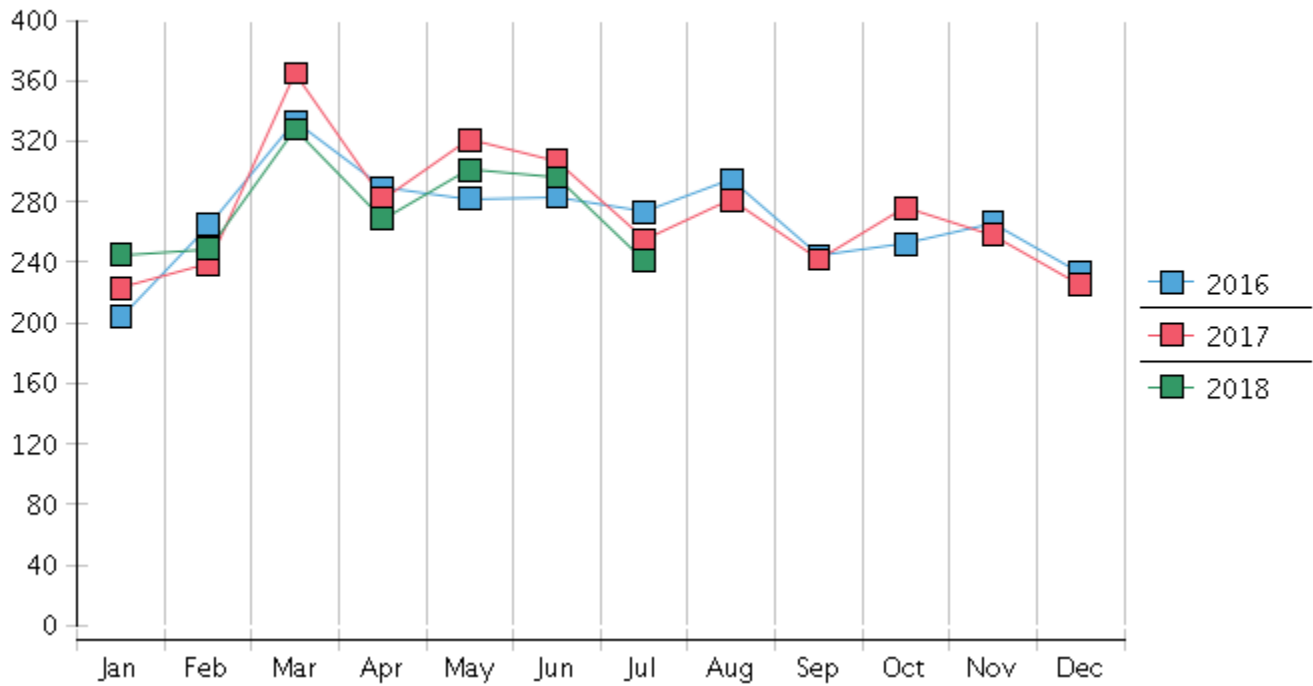
2 Chapter breakdowns are pulled from the Dynamic CM/ECF Database and may change over time due to conversions or other case changes.

3. Average disposition represents number of days from filing to discharge/dismissal of case.

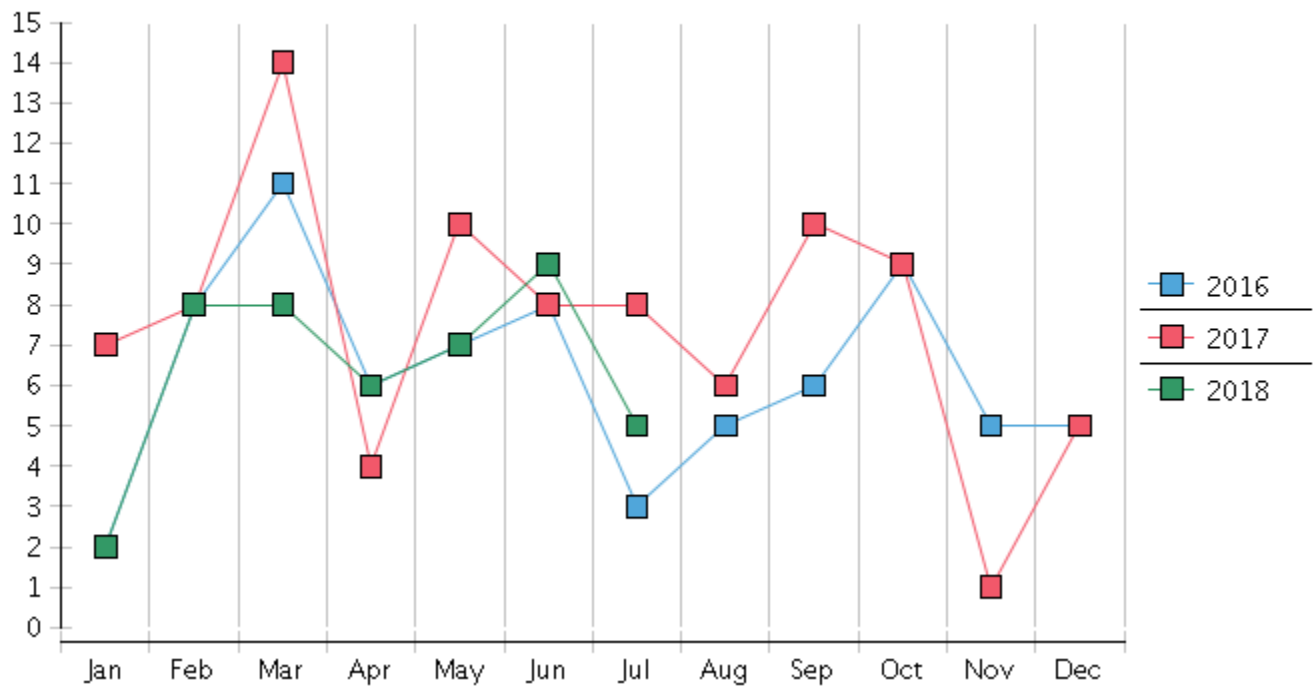
United States Bankruptcy Court - District of New Mexico
 Statistics - Year-To-Date Totals

2018	January	February	March	April	May	June	July	August	September	October	November	December	Total YTD
FILED													FILED
Chapter 7 Combined	216	230	288	240	265	254	211						1704
Chapter 11	0	1	1	2	4	1	2						11
Chapter 12	0	0	0	0	0	0	0						0
Chapter 13	29	18	39	27	32	41	28						214
Total Filed for Month	245	249	328	269	301	296	241						
Totals Filed Year-to-Date	245	494	822	1091	1392	1688	1929						1929
CLOSED													CLOSED
Chapter 7 Combined Total	237	249	202	183	266	286	296						1719
Asset	9	3	4	3	7	15	6						47
No Asset	228	246	198	180	259	271	290						1672
Chapter 11	2	1	3	2	5	2	2						17
Chapter 12	0	0	0	0	0	0	0						0
Chapter 13	28	20	23	18	16	19	23						147
Totals Closed for Month	267	270	228	203	287	307	321						
Totals Closed Year-to-Date	267	537	765	968	1255	1562	1883						1883
Closing Breakdown													
Closed by Case Managers	52	41	48	46	49	72	43						351
Closed Automatically	215	229	180	157	238	235	278						1532
Percent Closed by Case Managers	19.48%	15.19%	21.05%	22.66%	17.07%	23.45%	13.4%						18.64%
Percent Closed Automatically	80.52%	84.81%	78.95%	77.34%	82.93%	76.55%	86.6%						81.36%
PENDING													
Chapter 7	1014	992	1085	1142	1145	1116	1032						
Chapter 11	76	75	72	73	70	69	68						
Chapter 12	6	6	6	6	6	6	6						
Chapter 13	767	774	790	800	818	837	845						
Total Pending for Month	1863	1847	1953	2021	2039	2028	1951						
Adversary Proceedings													AP
Filed	2	8	8	6	7	9	5						45
Closed	4	2	15	4	11	8	6						50
Total Adversaries Pending	122	129	122	124	120	121	120						

Monthly Bankruptcy Filings



Monthly Adversary Filings



United States Bankruptcy Court - District of New Mexico
Pro Se Filings

	Jan	Feb	Mar	Apr	May	Jun	Jul	Aug	Sep	Oct	Nov	Dec	YTD Total
2017	223	239	365	282	321	307	255	281	242	276	258	225	3,274
pro se 7	21	20	26	27	31	23	21	28	20	34	28	20	299
pro se 13	2	3	5	1	5	2	5	3	1	4	4	1	36
pro se with BPP	15	11	18	19	22	15	17	21	12	23	18	13	204
% Of Bankruptcies Filed	10.31%	9.62%	8.77%	9.93%	11.21%	8.14%	10.2%	11.03%	8.68%	13.77%	12.4%	9.33%	10.23%
2018	245	249	328	269	301	296	241						1,929
pro se 7	22	20	22	20	38	29	32						183
pro se 13	2	2	5	1	1	2	2						15
pro se with BPP	16	11	16	14	29	15	23						124
% Of Bankruptcies Filed	9.8%	8.84%	8.23%	7.81%	12.96%	10.47%	14.11%						10.26%
	Jan	Feb	Mar	Apr	May	Jun	Jul	Aug	Sep	Oct	Nov	Dec	YTD Total