

United States Bankruptcy Court

District of New Mexico

October 1, 2019
 CM/ECF Real Time Statistics
September 2019 Report

Capsule View	Sep 2019	Aug 2019	Sep 2018	% Change	
	this month	last month	this month last year	from last month	from this month last year
Bankruptcies Filed					
Chapter 7	177	212	236	-16.51%	-25%
Chapter 11	2	4	1	-50%	100%
Chapter 12	0	0	0	0%	0%
Chapter 13	30	36	21	-16.67%	42.86%
TOTAL BANKRUPTCY FILINGS	209	252	258	-17.06%	-18.99%
Adversaries					
Adversaries Filed	7	5	5	40%	40%
YEAR-TO-DATE					
	2019(CY)		2018(LY)	% Change	
BANKRUPTCIES FILED²				CY - LY	
Chapter 7	1,936		2,203	-12.12%	
Chapter 11	20		13	53.85%	
Chapter 12	0		0	0%	
Chapter 13	309		264	17.05%	
TOTAL FILINGS	2,265		2,480	-8.67%	
BANKRUPTCIES PENDING⁽¹⁾⁽²⁾					
Chapter 7	843		1,147	-26.5%	
Chapter 11	40		43	-6.98%	
Chapter 12	3		6	-50%	
Chapter 13	903		796	13.44%	
TOTAL PENDING	1,789		1,992	-10.19%	
ADVERSARY PROCEEDINGS					
Filed	72		65	10.77%	
TOTAL PENDING¹	86		134	-35.82%	
AVERAGES					
Chapter 7 Average Disposition ³ in Days	121		118	2.54%	
Chapter 13 Average Disposition ³ in Days	856		1017	-15.83%	
Chapter 13 Average Days to Confirmation	235		126	86.51%	

1 Pending totals are generated from CM/ECF on a time frame ending on the last day of the month.

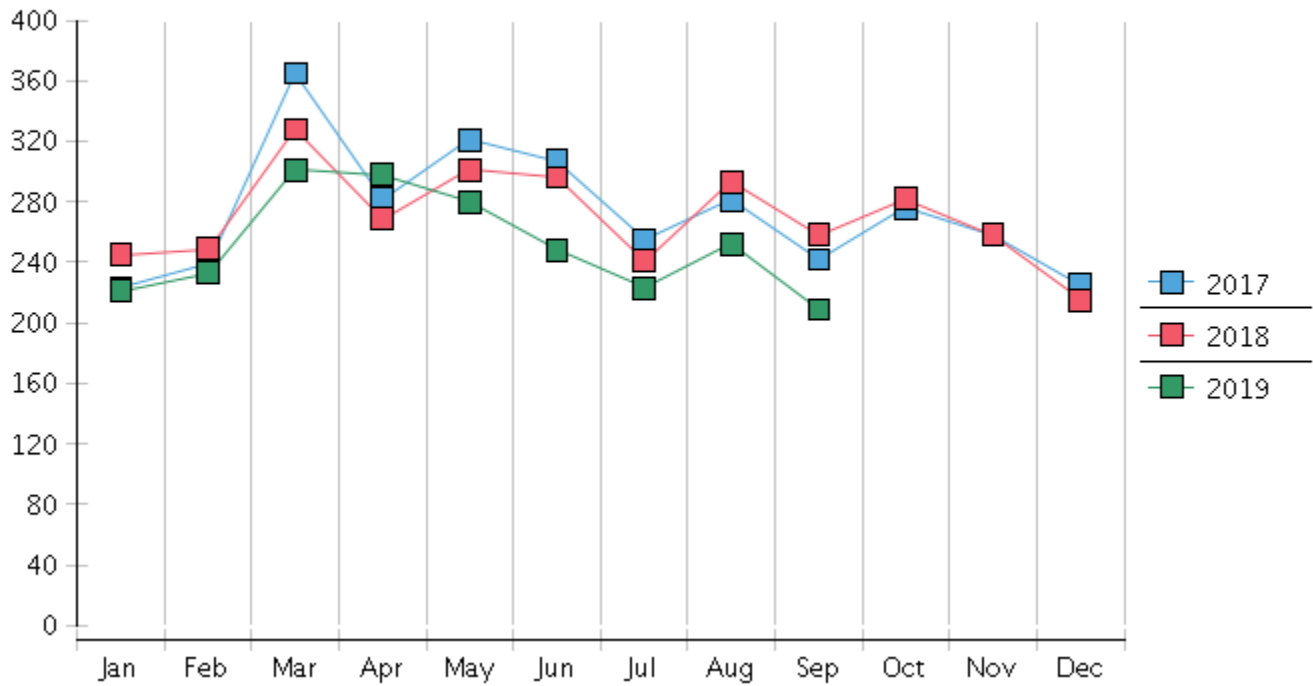
2 Chapter breakdowns are pulled from the Dynamic CM/ECF Database and may change over time due to conversions or other case changes.

3. Average disposition represents number of days from filing to discharge/dismissal of case.

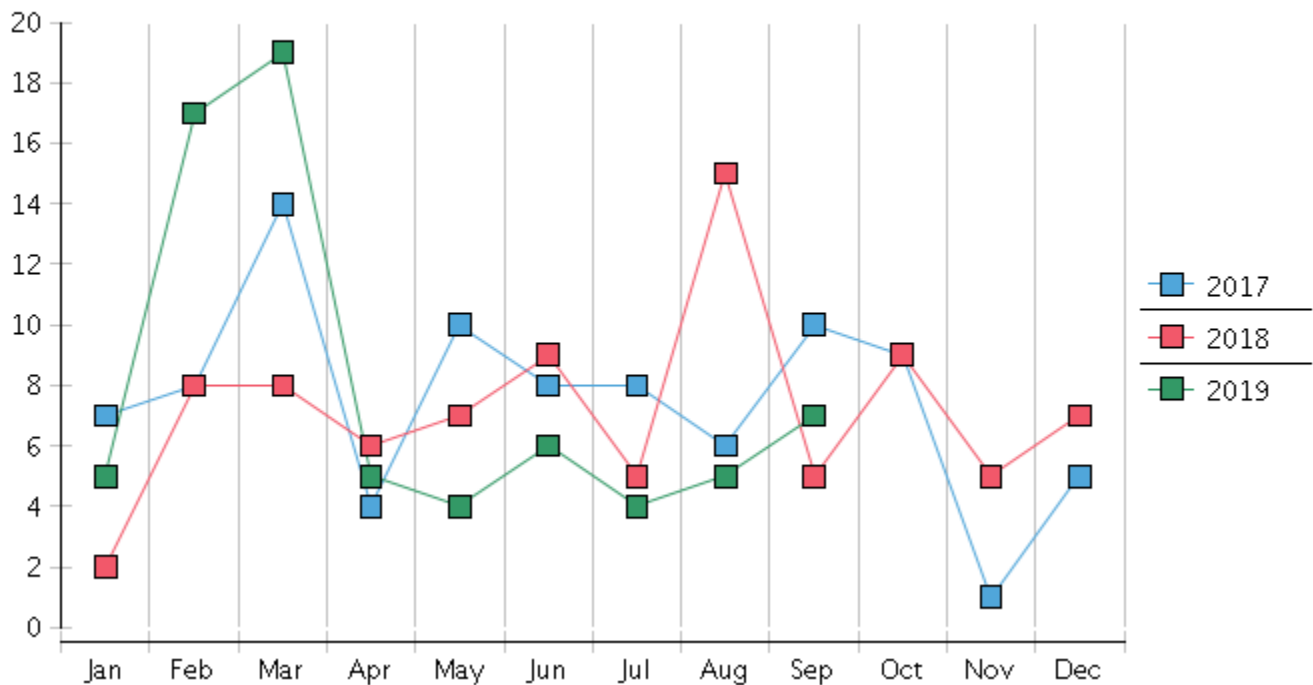
United States Bankruptcy Court - District of New Mexico
 Statistics - Year-To-Date Totals

2019	January	February	March	April	May	June	July	August	September	October	November	December	Total YTD
FILED													FILED
Chapter 7 Combined	194	196	262	258	246	198	193	212	177				1936
Chapter 11	0	3	2	0	4	4	1	4	2				20
Chapter 12	0	0	0	0	0	0	0	0	0				0
Chapter 13	27	34	37	40	30	46	29	36	30				309
Total Filed for Month	221	233	301	298	280	248	223	252	209				
Totals Filed Year-to-Date	221	454	755	1053	1333	1581	1804	2056	2265				2265
CLOSED													CLOSED
Chapter 7 Combined Total	199	305	223	204	227	154	319	243	320				2194
Asset	1	1	4	4	2	4	8	1	6				31
No Asset	198	304	219	200	225	150	311	242	314				2163
Chapter 11	3	2	1	3	4	2	2	4	1				22
Chapter 12	0	1	1	1	0	0	0	0	0				3
Chapter 13	24	25	16	19	33	37	29	35	31				249
Totals Closed for Month	226	333	241	227	264	193	350	282	352				
Totals Closed Year-to-Date	226	559	800	1027	1291	1484	1834	2116	2468				2468
Closing Breakdown													
Closed by Case Managers	66	58	50	53	63	56	62	69	58				535
Closed Automatically	160	275	191	174	201	137	288	213	294				1933
Percent Closed by Case Managers	29.2%	17.42%	20.75%	23.35%	23.86%	29.02%	17.71%	24.47%	16.48%				21.68%
Percent Closed Automatically	70.8%	82.58%	79.25%	76.65%	76.14%	70.98%	82.29%	75.53%	83.52%				78.32%
PENDING													
Chapter 7	1068	962	1002	1064	1090	1136	1011	982	843				
Chapter 11	38	40	41	38	38	40	39	39	40				
Chapter 12	6	5	4	3	3	3	3	3	3				
Chapter 13	843	853	876	896	892	900	901	904	903				
Total Pending for Month	1955	1860	1923	2001	2023	2079	1954	1928	1789				
Adversary Proceedings													AP
Filed	5	17	19	5	4	6	4	5	7				72
Closed	7	7	4	6	7	6	20	6	8				71
Total Adversaries Pending	81	91	106	106	103	103	87	86	86				

Monthly Bankruptcy Filings



Monthly Adversary Filings



United States Bankruptcy Court - District of New Mexico
Pro Se Filings

	Jan	Feb	Mar	Apr	May	Jun	Jul	Aug	Sep	Oct	Nov	Dec	YTD Total
2018	245	249	328	269	301	296	241	293	258	282	258	215	3,235
pro se 7	22	20	22	20	38	29	32	29	19	21	20	25	297
pro se 13	2	2	5	1	1	2	2	4	3	4	2	2	30
pro se with BPP	16	11	16	14	29	15	23	19	12	8	10	16	189
% Of Bankruptcies Filed	9.8%	8.84%	8.23%	7.81%	12.96%	10.47%	14.11%	11.6%	8.53%	8.87%	8.53%	12.56%	10.11%
2019	221	233	301	298	280	248	223	252	209				2,265
pro se 7	27	18	23	26	18	15	19	19	22				187
pro se 13	4	8	7	3	6	8	6	7	4				53
pro se with BPP	19	10	14	15	11	10	9	8	11				107
% Of Bankruptcies Filed	14.03%	11.16%	9.97%	9.73%	8.93%	9.27%	11.21%	10.32%	12.44%				10.6%
	Jan	Feb	Mar	Apr	May	Jun	Jul	Aug	Sep	Oct	Nov	Dec	YTD Total