

United States Bankruptcy Court
District of New Mexico

October 1, 2018
CM/ECF Real Time Statistics
September 2018 Report

Capsule View	Sep 2018	Aug 2018	Sep 2017	% Change	
	this month	last month	this month last year	from last month	from this month last year
Bankruptcies Filed					
Chapter 7	236	263	208	-10.27%	13.46%
Chapter 11	1	1	5	0%	-80%
Chapter 12	0	0	0	0%	0%
Chapter 13	21	29	29	-27.59%	-27.59%
TOTAL BANKRUPTCY FILINGS	258	293	242	-11.95%	6.61%
Adversaries					
Adversaries Filed	5	15	10	-66.67%	-50%
YEAR-TO-DATE					
	2018(CY)		2017(LY)	% Change	
BANKRUPTCIES FILED²				CY - LY	
Chapter 7	2,203		2,256	-2.35%	
Chapter 11	13		27	-51.85%	
Chapter 12	0		2	-200%	
Chapter 13	264		230	14.78%	
<u>TOTAL FILINGS</u>	2,480		2,515	-1.39%	
BANKRUPTCIES PENDING⁽¹⁾⁽²⁾					
Chapter 7	1,074		1,100	-2.36%	
Chapter 11	64		79	-18.99%	
Chapter 12	6		6	0%	
Chapter 13	848		767	10.56%	
<u>TOTAL PENDING</u>	1,992		1,952	2.05%	
ADVERSARY PROCEEDINGS					
Filed	65		75	-13.33%	
<u>TOTAL PENDING¹</u>	134		137	-2.19%	
AVERAGES					
Chapter 7 Average Disposition ³ in Days	118		122	-3.28%	
Chapter 13 Average Disposition ³ in Days	1020		1071	-4.76%	
Chapter 13 Average Days to Confirmation	126		122	3.28%	

1 Pending totals are generated from CM/ECF on a time frame ending on the last day of the month.

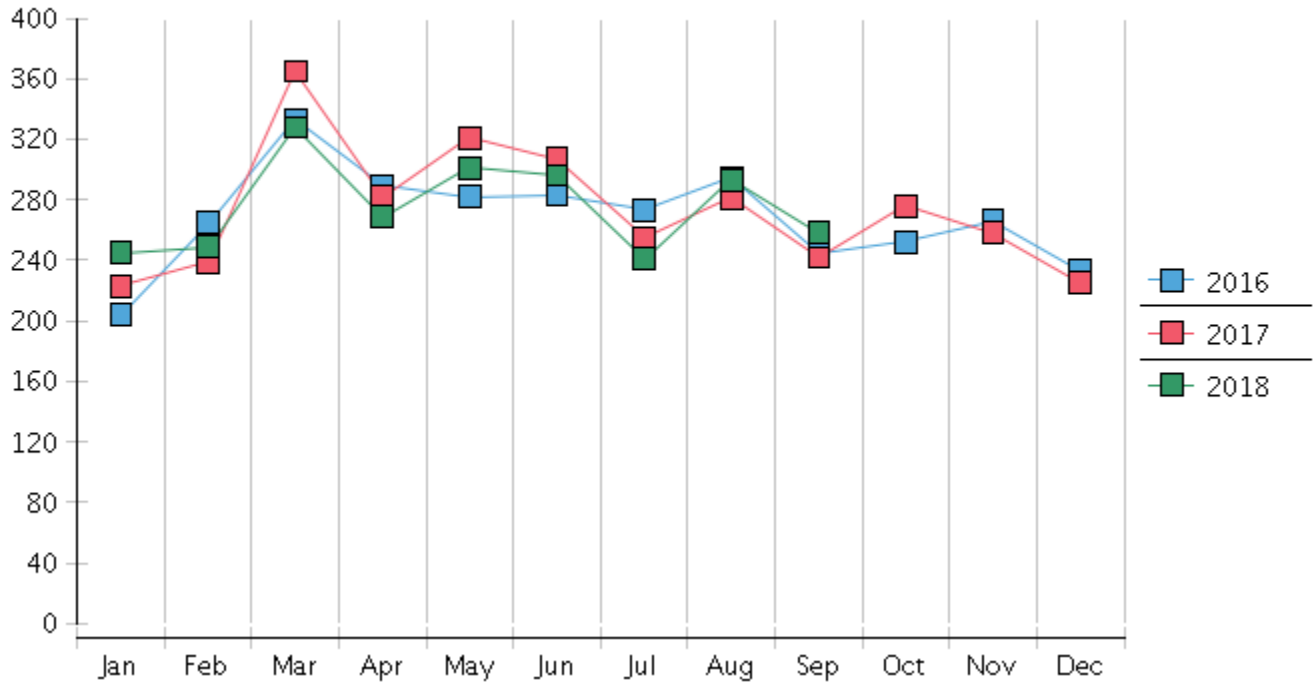
2 Chapter breakdowns are pulled from the Dynamic CM/ECF Database and may change over time due to conversions or other case changes.

3. Average disposition represents number of days from filing to discharge/dismissal of case.

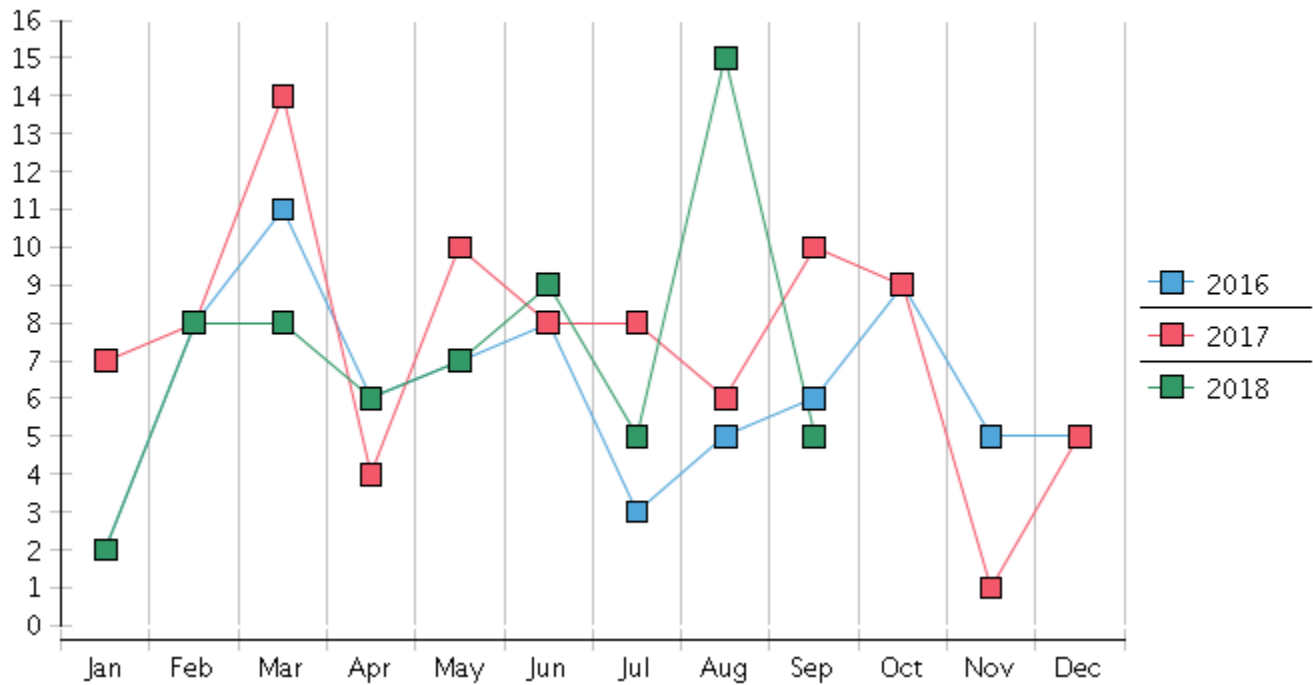
United States Bankruptcy Court - District of New Mexico
 Statistics - Year-To-Date Totals

2018	January	February	March	April	May	June	July	August	September	October	November	December	Total YTD
FILED													FILED
Chapter 7 Combined	216	230	288	240	265	254	211	263	236				2203
Chapter 11	0	1	1	2	4	1	2	1	1				13
Chapter 12	0	0	0	0	0	0	0	0	0				0
Chapter 13	29	18	39	27	32	41	28	29	21				264
Total Filed for Month	245	249	328	269	301	296	241	293	258				
Totals Filed Year-to-Date	245	494	822	1091	1392	1688	1929	2222	2480				2480
CLOSED													CLOSED
Chapter 7 Combined Total	237	249	202	183	266	286	296	227	250				2196
Asset	9	3	4	3	7	15	6	0	2				49
No Asset	228	246	198	180	259	271	290	227	248				2147
Chapter 11	2	1	3	2	5	2	2	4	2				23
Chapter 12	0	0	0	0	0	0	0	0	0				0
Chapter 13	28	20	23	18	16	19	23	25	13				185
Totals Closed for Month	267	270	228	203	287	307	321	256	265				
Totals Closed Year-to-Date	267	537	765	968	1255	1562	1883	2139	2404				2404
Closing Breakdown													
Closed by Case Managers	52	41	48	46	49	72	43	63	40				454
Closed Automatically	215	229	180	157	238	235	278	193	225				1950
Percent Closed by Case Managers	19.48%	15.19%	21.05%	22.66%	17.07%	23.45%	13.4%	24.61%	15.09%				18.89%
Percent Closed Automatically	80.52%	84.81%	78.95%	77.34%	82.93%	76.55%	86.6%	75.39%	84.91%				81.11%
PENDING													
Chapter 7	1023	1000	1095	1154	1157	1131	1047	1088	1074				
Chapter 11	74	73	70	71	68	67	66	64	64				
Chapter 12	6	6	6	6	6	6	6	6	6				
Chapter 13	760	768	782	790	808	824	832	837	848				
Total Pending for Month	1863	1847	1953	2021	2039	2028	1951	1995	1992				
Adversary Proceedings													AP
Filed	2	8	8	6	7	9	5	15	5				65
Closed	4	2	15	4	11	8	6	3	3				56
Total Adversaries Pending	122	129	122	124	120	121	120	132	134				

Monthly Bankruptcy Filings



Monthly Adversary Filings



United States Bankruptcy Court - District of New Mexico
Pro Se Filings

	Jan	Feb	Mar	Apr	May	Jun	Jul	Aug	Sep	Oct	Nov	Dec	YTD Total
2017	223	239	365	282	321	307	255	281	242	276	258	225	3,274
pro se 7	21	20	26	27	31	23	21	28	20	34	28	20	299
pro se 13	2	3	5	1	5	2	5	3	1	4	4	1	36
pro se with BPP	15	11	18	19	22	15	17	21	12	23	18	13	204
% Of Bankruptcies Filed	10.31%	9.62%	8.77%	9.93%	11.21%	8.14%	10.2%	11.03%	8.68%	13.77%	12.4%	9.33%	10.23%
2018	245	249	328	269	301	296	241	293	258				2,480
pro se 7	22	20	22	20	38	29	32	29	19				231
pro se 13	2	2	5	1	1	2	2	4	3				22
pro se with BPP	16	11	16	14	29	15	23	19	12				155
% Of Bankruptcies Filed	9.8%	8.84%	8.23%	7.81%	12.96%	10.47%	14.11%	11.6%	8.53%				10.2%
	Jan	Feb	Mar	Apr	May	Jun	Jul	Aug	Sep	Oct	Nov	Dec	YTD Total