

United States Bankruptcy Court
District of New Mexico

October 2, 2023
CM/ECF Real Time Statistics
September 2023 Report

Capsule View	Sep 2023	Aug 2023	Sep 2022	% Change	
	this month	last month	this month last year	from last month	from this month last year
Bankruptcies Filed					
Chapter 7	98	100	75	-2%	30.67%
Chapter 11	0	1	0	-100%	0%
Chapter 12	0	0	0	0%	0%
Chapter 13	17	19	14	-10.53%	21.43%
TOTAL BANKRUPTCY FILINGS	115	120	89	-4.17%	29.21%
Adversaries					
Adversaries Filed	4	2	0	100%	400%
YEAR-TO-DATE					
	2023(CY)	2022(LY)	% Change		
BANKRUPTCIES FILED²			CY - LY		
Chapter 7	713	681	4.7%		
Chapter 11	4	3	33.33%		
Chapter 12	0	0	0%		
Chapter 13	149	122	22.13%		
<u>TOTAL FILINGS</u>	866	806	7.44%		
BANKRUPTCIES PENDING⁽¹⁾⁽²⁾					
Chapter 7	490	501	-2.2%		
Chapter 11	18	23	-21.74%		
Chapter 12	0	1	-100%		
Chapter 13	640	690	-7.25%		
<u>TOTAL PENDING</u>	1,148	1,215	-5.51%		
ADVERSARY PROCEEDINGS					
Filed	40	19	110.53%		
<u>TOTAL PENDING¹</u>	41	37	10.81%		
AVERAGES					
Chapter 7 Average Disposition ³ in Days	161	142	13.38%		
Chapter 13 Average Disposition ³ in Days	1214	1209	0.41%		
Chapter 13 Average Days to Confirmation	143	167	-14.37%		

1 Pending totals are generated from CM/ECF on a time frame ending on the last day of the month.

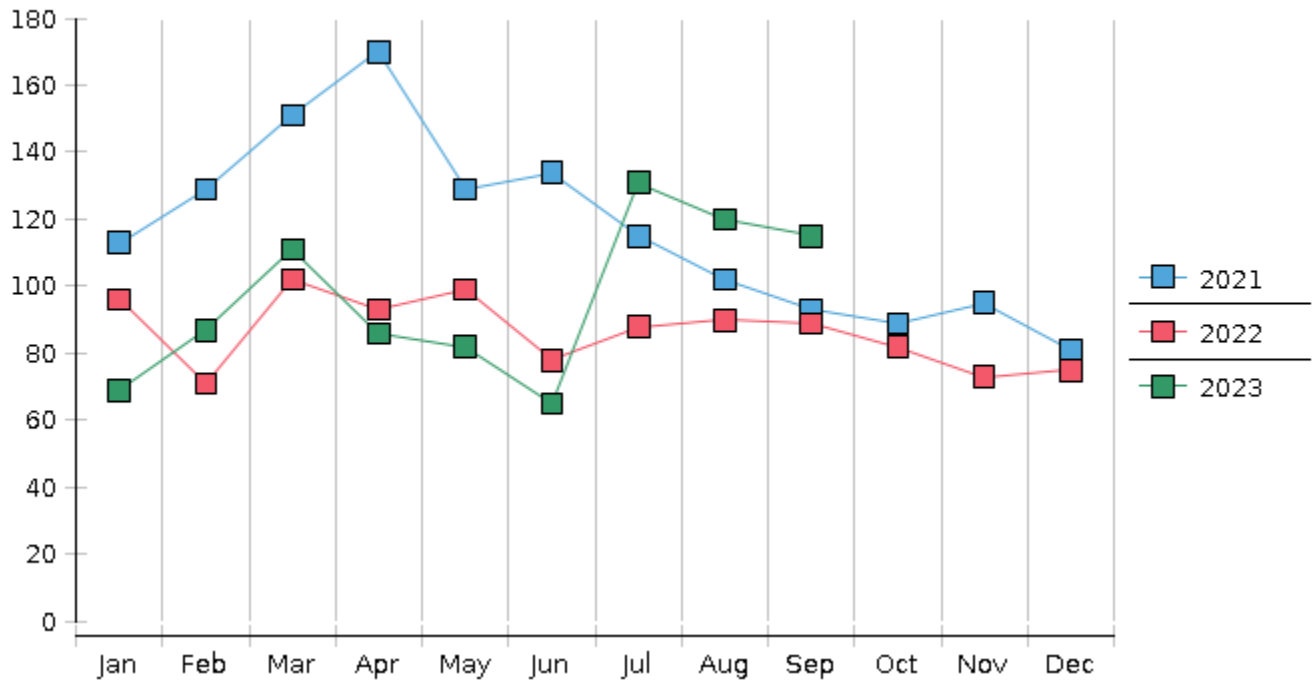
2 Chapter breakdowns are pulled from the Dynamic CM/ECF Database and may change over time due to conversions or other case changes.

3. Average disposition represents number of days from filing to discharge/dismissal of case.

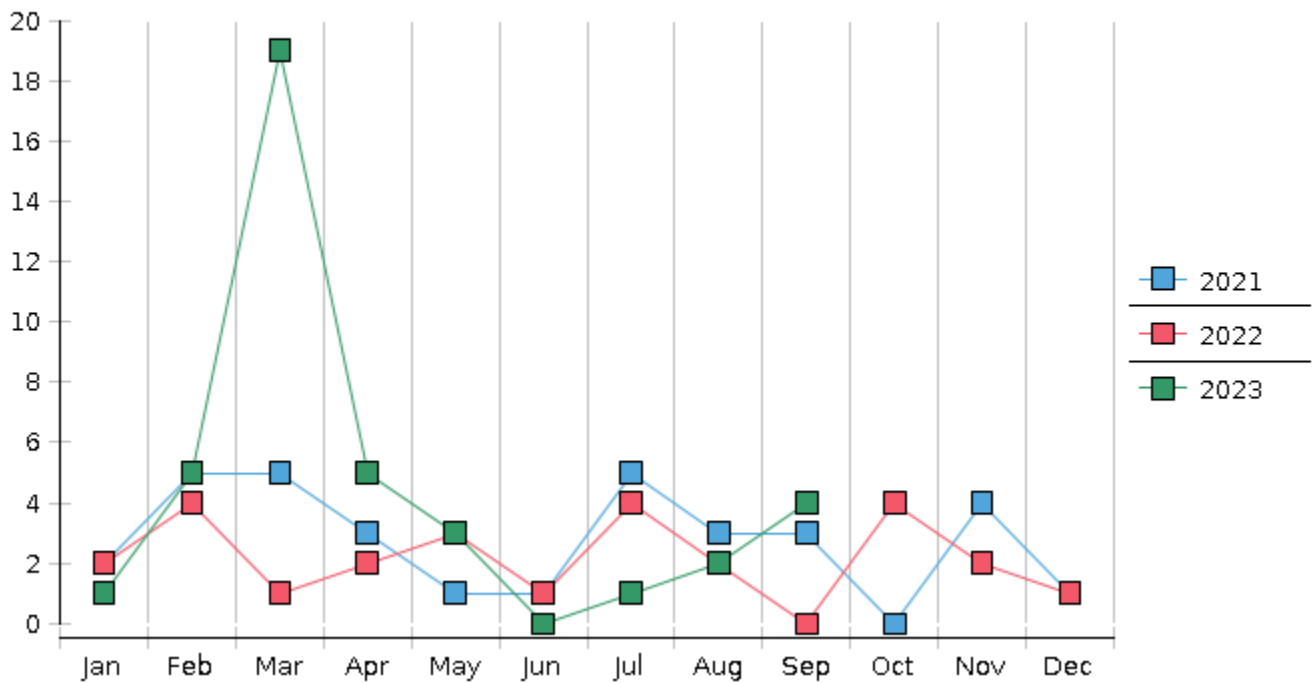
United States Bankruptcy Court - District of New Mexico
 Statistics - Year-To-Date Totals

2023	January	February	March	April	May	June	July	August	September	October	November	December	Total YTD
FILED													FILED
Chapter 7 Combined	55	70	91	68	65	51	115	100	98				713
Chapter 11	0	0	0	0	1	1	1	1	0				4
Chapter 12	0	0	0	0	0	0	0	0	0				0
Chapter 13	14	17	20	18	16	13	15	19	17				149
Total Filed for Month	69	87	111	86	82	65	131	120	115				
Totals Filed Year-to-Date	69	156	267	353	435	500	631	751	866				866
CLOSED													CLOSED
Chapter 7 Combined Total	98	60	67	59	93	85	104	62	63				691
Asset	4	3	6	5	3	3	3	2	2				31
No Asset	94	57	61	54	90	82	101	60	61				660
Chapter 11	3	1	1	2	1	0	0	0	1				9
Chapter 12	0	0	0	0	0	0	0	0	0				0
Chapter 13	22	23	23	12	30	21	7	25	21				184
Totals Closed for Month	123	84	91	73	124	106	111	87	85				
Totals Closed Year-to-Date	123	207	298	371	495	601	712	799	884				884
Closing Breakdown													
Closed by Case Managers	41	42	51	26	52	40	17	41	31				341
Closed Automatically	82	42	40	47	72	66	94	46	54				543
Percent Closed by Case Managers	33.33%	50.0%	56.04%	35.62%	41.94%	37.74%	15.32%	47.13%	36.47%				38.57%
Percent Closed Automatically	66.67%	50.0%	43.96%	64.38%	58.06%	62.26%	84.68%	52.87%	63.53%				61.43%
PENDING													
Chapter 7	413	423	449	460	433	400	412	455	490				
Chapter 11	20	19	18	16	16	17	18	19	18				
Chapter 12	0	0	0	0	0	0	0	0	0				
Chapter 13	667	661	659	663	649	641	650	643	640				
Total Pending for Month	1100	1103	1126	1139	1098	1058	1080	1117	1148				
Adversary Proceedings													AP
Filed	1	5	19	5	3	0	1	2	4				40
Closed	1	1	10	11	5	3	1	7	0				39
Total Adversaries Pending	39	43	52	46	45	42	42	37	41				

Monthly Bankruptcy Filings



Monthly Adversary Filings



United States Bankruptcy Court - District of New Mexico

Pro Se Filings

	Jan	Feb	Mar	Apr	May	Jun	Jul	Aug	Sep	Oct	Nov	Dec	YTD Total
2022	96	71	102	93	99	78	88	90	89	82	73	75	1,036
pro se 7	8	1	2	6	5	3	5	8	3	5	3	10	59
pro se 13	2	1	0	2	3	4	2	1	0	0	3	2	20
pro se with BPP	5	1	0	0	2	0	3	3	1	2	0	1	18
% Of Bankruptcies Filed	10.42%	2.82%	1.96%	8.6%	8.08%	8.97%	7.95%	10%	3.37%	6.1%	8.22%	16%	7.63%
2023	69	87	111	86	82	65	131	120	115				866
pro se 7	6	5	3	5	7	2	6	6	10				50
pro se 13	0	1	4	2	2	1	0	2	2				14
pro se with BPP	1	1	0	2	2	0	2	0	2				10
% Of Bankruptcies Filed	8.7%	6.9%	6.31%	8.14%	10.98%	4.62%	4.58%	6.67%	10.43%				7.39%
	Jan	Feb	Mar	Apr	May	Jun	Jul	Aug	Sep	Oct	Nov	Dec	YTD Total