

United States Bankruptcy Court
District of New Mexico

November 1, 2021
CM/ECF Real Time Statistics
October 2021 Report

Capsule View	Oct 2021	Sep 2021	Oct 2020	% Change	
	this month	last month	this month last year	from last month	from this month last year
Bankruptcies Filed					
Chapter 7	77	80	177	-3.75%	-56.5%
Chapter 11	1	0	0	100%	100%
Chapter 12	0	0	0	0%	0%
Chapter 13	11	13	19	-15.38%	-42.11%
TOTAL BANKRUPTCY FILINGS	89	93	196	-4.3%	-54.59%
Adversaries					
Adversaries Filed	0	3	8	-300%	-800%
YEAR-TO-DATE	2021(CY)		2020(LY)	% Change	
BANKRUPTCIES FILED ²				CY - LY	
Chapter 7	1,106		1,873	-40.95%	
Chapter 11	4		13	-69.23%	
Chapter 12	1		2	-50%	
Chapter 13	114		225	-49.33%	
<u>TOTAL FILINGS</u>	1,225		2,113	-42.03%	
BANKRUPTCIES PENDING ⁽¹⁾⁽²⁾					
Chapter 7	481		861	-44.13%	
Chapter 11	24		26	-7.69%	
Chapter 12	1		3	-66.67%	
Chapter 13	808		867	-6.81%	
<u>TOTAL PENDING</u>	1,314		1,757	-25.21%	
ADVERSARY PROCEEDINGS					
Filed	28		63	-55.56%	
<u>TOTAL PENDING¹</u>	52		81	-35.8%	
AVERAGES					
Chapter 7 Average Disposition ³ in Days	127		122	4.1%	
Chapter 13 Average Disposition ³ in Days	1168		967	20.79%	
Chapter 13 Average Days to Confirmation	194		138	40.58%	

1 Pending totals are generated from CM/ECF on a time frame ending on the last day of the month.

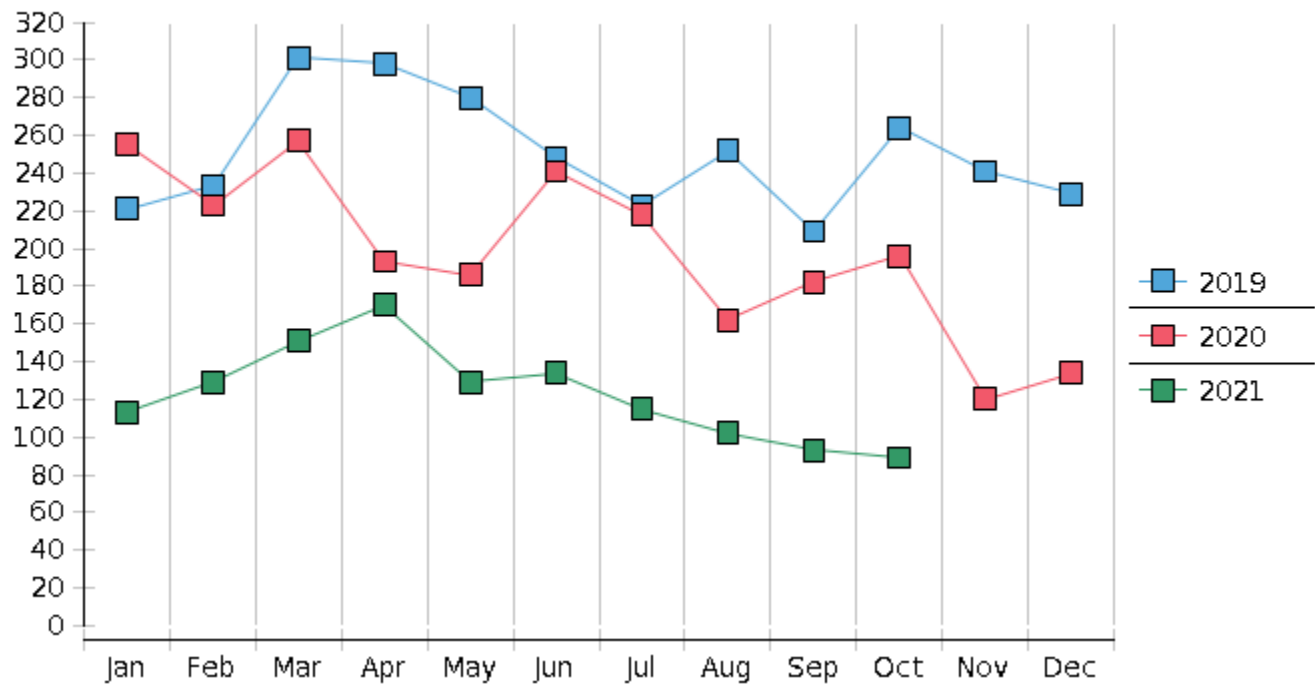
2 Chapter breakdowns are pulled from the Dynamic CM/ECF Database and may change over time due to conversions or other case changes.

3. Average disposition represents number of days from filing to discharge/dismissal of case.

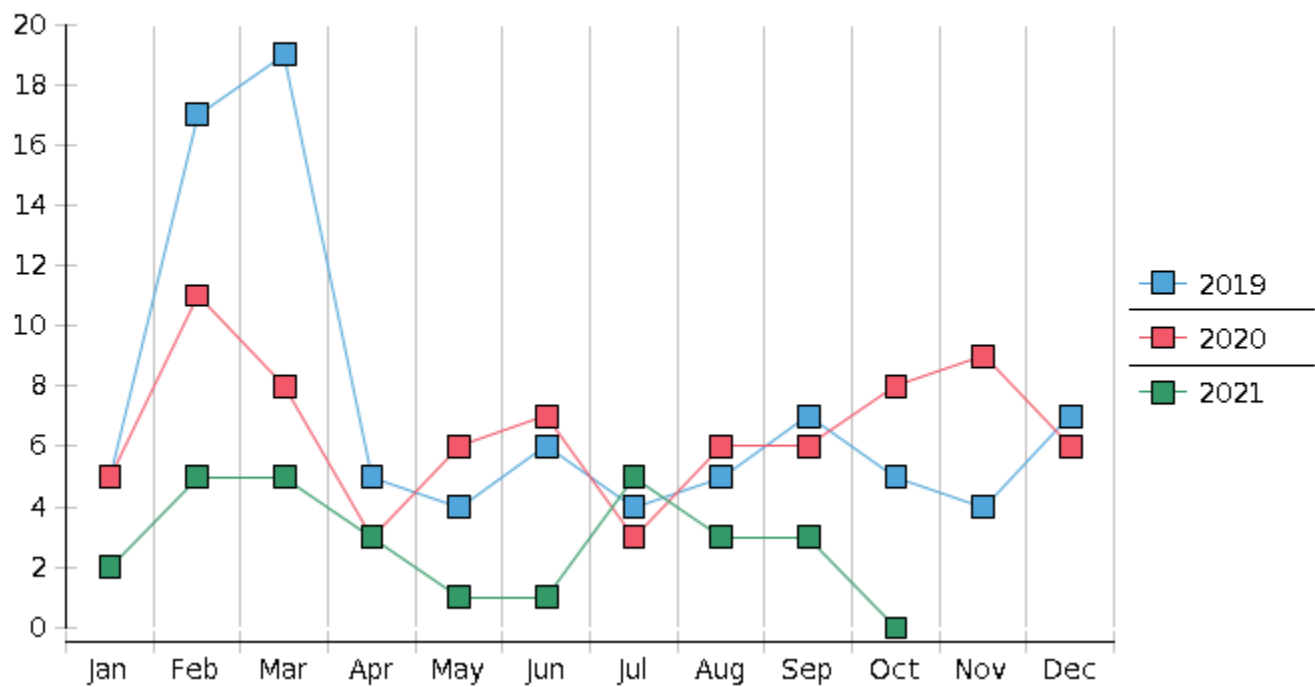
United States Bankruptcy Court - District of New Mexico
Statistics - Year-To-Date Totals

2021	January	February	March	April	May	June	July	August	September	October	November	December	Total YTD
FILED													FILED
Chapter 7 Combined	106	117	140	149	123	120	105	89	80	77			1106
Chapter 11	0	1	0	0	0	1	1	0	0	1			4
Chapter 12	0	0	0	1	0	0	0	0	0	0			1
Chapter 13	7	11	11	20	6	13	9	13	13	11			114
Total Filed for Month	113	129	151	170	129	134	115	102	93	89			
Totals Filed Year-to-Date	113	242	393	563	692	826	941	1043	1136	1225			1225
CLOSED													CLOSED
Chapter 7 Combined Total	185	158	122	103	107	185	115	172	115	115			1377
Asset	1	3	6	6	2	8	5	4	8	3			46
No Asset	184	155	116	97	105	177	110	168	107	112			1331
Chapter 11	0	0	2	1	0	1	0	2	2	1			9
Chapter 12	0	0	0	1	1	0	1	0	0	0			3
Chapter 13	10	15	19	16	21	19	12	21	15	16			164
Totals Closed for Month	195	173	143	121	129	205	128	195	132	132			
Totals Closed Year-to-Date	195	368	511	632	761	966	1094	1289	1421	1553			1553
Closing Breakdown													
Closed by Case Managers	39	26	45	37	33	41	36	42	41	36			376
Closed Automatically	156	147	98	84	96	164	92	153	91	96			1177
Percent Closed by Case Managers	20.0%	15.03%	31.47%	30.58%	25.58%	20.0%	28.13%	21.54%	31.06%	27.27%			24.21%
Percent Closed Automatically	80.0%	84.97%	68.53%	69.42%	74.42%	80.0%	71.88%	78.46%	68.94%	72.73%			75.79%
PENDING													
Chapter 7	644	604	624	671	694	633	622	545	516	481			
Chapter 11	27	28	26	25	25	26	28	26	24	24			
Chapter 12	3	3	3	3	2	2	1	1	1	1			
Chapter 13	853	850	842	847	831	825	823	814	812	808			
Total Pending for Month	1527	1485	1495	1546	1552	1486	1474	1386	1353	1314			
Adversary Proceedings													AP
Filed	2	5	5	3	1	1	5	3	3	0			28
Closed	7	2	11	10	6	11	3	4	2	11			67
Total Adversaries Pending	84	88	83	76	71	61	63	62	63	52			

Monthly Bankruptcy Filings



Monthly Adversary Filings



United States Bankruptcy Court - District of New Mexico
Pro Se Filings

	Jan	Feb	Mar	Apr	May	Jun	Jul	Aug	Sep	Oct	Nov	Dec	YTD Total
2020	255	223	257	193	186	241	218	162	182	196	120	134	2,367
pro se 7	30	20	26	11	10	20	13	15	10	13	7	11	186
pro se 13	7	4	1	0	1	0	0	0	1	1	0	4	19
pro se with BPP	13	10	15	2	6	14	5	6	6	8	4	4	93
% Of Bankruptcies Filed	14.51%	10.76%	10.51%	5.7%	5.91%	8.3%	5.96%	9.26%	6.59%	7.14%	5.83%	11.19%	8.66%
2021	113	129	151	170	129	134	115	102	93	89			1,225
pro se 7	11	14	10	12	10	18	6	8	8	3			100
pro se 13	2	2	0	3	1	0	2	1	3	1			15
pro se with BPP	5	10	4	6	5	9	2	2	2	1			46
% Of Bankruptcies Filed	11.5%	12.4%	6.62%	8.82%	8.53%	13.43%	6.96%	8.82%	11.83%	4.49%			9.39%
	Jan	Feb	Mar	Apr	May	Jun	Jul	Aug	Sep	Oct	Nov	Dec	YTD Total