

United States Bankruptcy Court
District of New Mexico

November 1, 2019
CM/ECF Real Time Statistics
October 2019 Report

Capsule View	Oct 2019	Sep 2019	Oct 2018	% Change	
	this month	last month	this month last year	from last month	from this month last year
Bankruptcies Filed					
Chapter 7	225	177	247	27.12%	-8.91%
Chapter 11	0	2	1	-200%	-100%
Chapter 12	0	0	0	0%	0%
Chapter 13	39	30	34	30%	14.71%
TOTAL BANKRUPTCY FILINGS	264	209	282	26.32%	-6.38%
Adversaries					
Adversaries Filed	5	7	9	-28.57%	-44.44%
YEAR-TO-DATE	2019(CY)	2018(LY)	% Change		
BANKRUPTCIES FILED²			CY - LY		
Chapter 7	2,161	2,450	-11.8%		
Chapter 11	20	14	42.86%		
Chapter 12	0	0	0%		
Chapter 13	348	298	16.78%		
TOTAL FILINGS	2,529	2,762	-8.44%		
BANKRUPTCIES PENDING⁽¹⁾⁽²⁾					
Chapter 7	959	1,133	-15.36%		
Chapter 11	38	39	-2.56%		
Chapter 12	3	6	-50%		
Chapter 13	897	810	10.74%		
TOTAL PENDING	1,897	1,988	-4.58%		
ADVERSARY PROCEEDINGS					
Filed	77	74	4.05%		
TOTAL PENDING¹	76	129	-41.09%		
AVERAGES					
Chapter 7 Average Disposition ³ in Days	120	117	2.56%		
Chapter 13 Average Disposition ³ in Days	871	1019	-14.52%		
Chapter 13 Average Days to Confirmation	224	127	76.38%		

1 Pending totals are generated from CM/ECF on a time frame ending on the last day of the month.

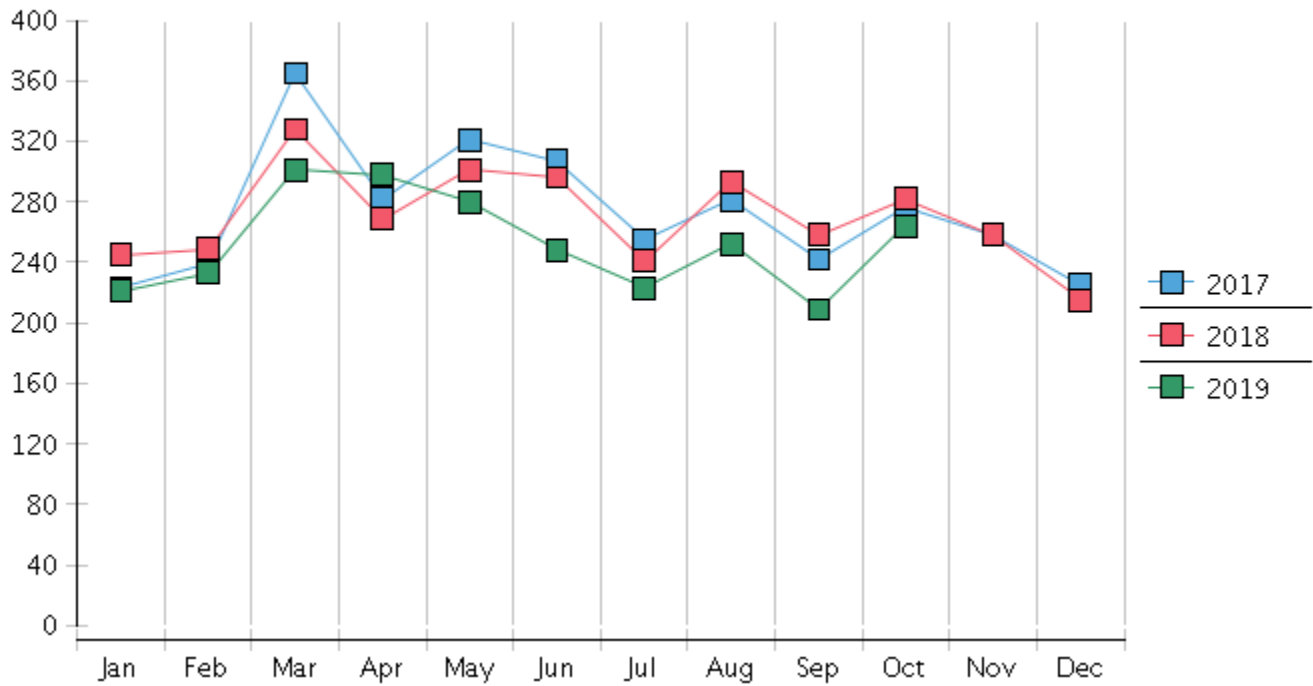
2 Chapter breakdowns are pulled from the Dynamic CM/ECF Database and may change over time due to conversions or other case changes.

3. Average disposition represents number of days from filing to discharge/dismissal of case.

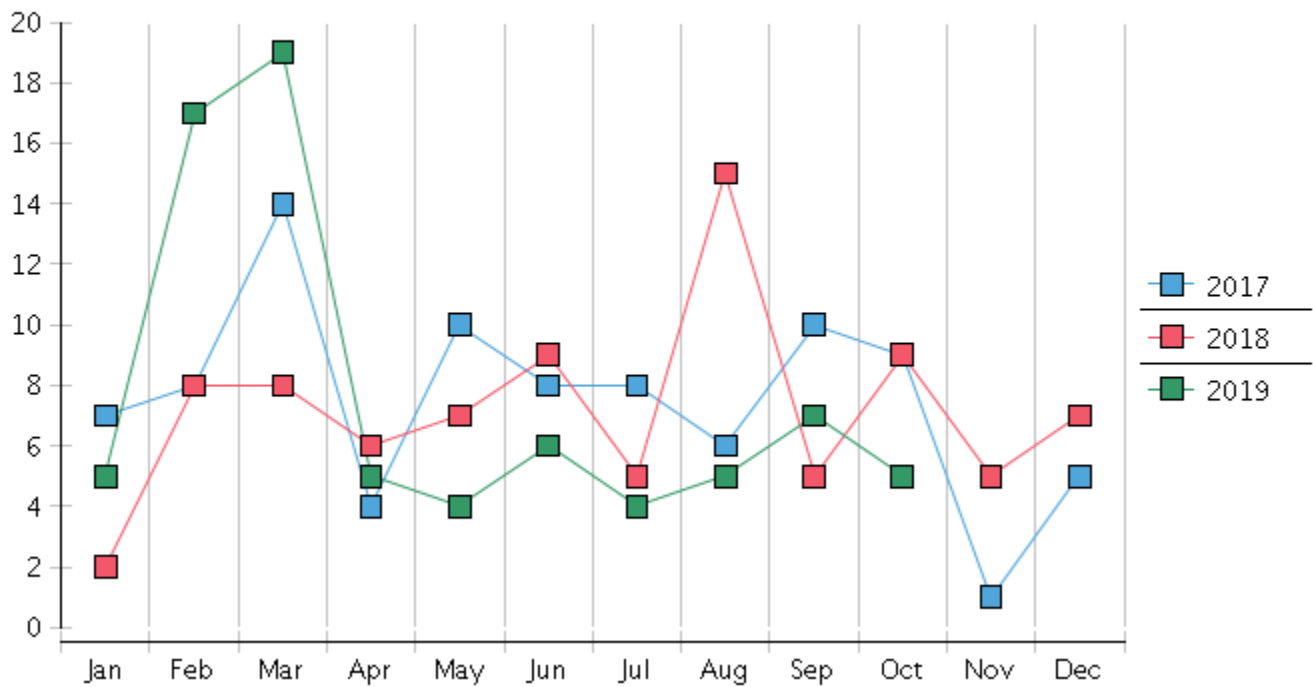
United States Bankruptcy Court - District of New Mexico
 Statistics - Year-To-Date Totals

2019	January	February	March	April	May	June	July	August	September	October	November	December	Total YTD
FILED													FILED
Chapter 7 Combined	194	196	262	258	246	198	193	212	177	225			2161
Chapter 11	0	3	2	0	4	4	1	4	2	0			20
Chapter 12	0	0	0	0	0	0	0	0	0	0			0
Chapter 13	27	34	37	40	30	46	29	36	30	39			348
Total Filed for Month	221	233	301	298	280	248	223	252	209	264			
Totals Filed Year-to-Date	221	454	755	1053	1333	1581	1804	2056	2265	2529			2529
CLOSED													CLOSED
Chapter 7 Combined Total	199	305	223	204	227	154	319	243	320	121			2315
Asset	1	1	4	4	2	4	8	1	6	5			36
No Asset	198	304	219	200	225	150	311	242	314	116			2279
Chapter 11	3	2	1	3	4	2	2	4	1	0			22
Chapter 12	0	1	1	1	0	0	0	0	0	0			3
Chapter 13	24	25	16	19	33	37	29	35	31	37			286
Totals Closed for Month	226	333	241	227	264	193	350	282	352	158			
Totals Closed Year-to-Date	226	559	800	1027	1291	1484	1834	2116	2468	2626			2626
Closing Breakdown													
Closed by Case Managers	66	58	50	53	63	56	62	69	58	61			596
Closed Automatically	160	275	191	174	201	137	288	213	294	97			2030
Percent Closed by Case Managers	29.2%	17.42%	20.75%	23.35%	23.86%	29.02%	17.71%	24.47%	16.48%	38.61%			22.7%
Percent Closed Automatically	70.8%	82.58%	79.25%	76.65%	76.14%	70.98%	82.29%	75.53%	83.52%	61.39%			77.3%
PENDING													
Chapter 7	1074	968	1008	1070	1096	1145	1020	991	852	959			
Chapter 11	37	39	40	37	37	38	37	37	38	38			
Chapter 12	6	5	4	3	3	3	3	3	3	3			
Chapter 13	838	848	871	891	887	893	894	897	896	897			
Total Pending for Month	1955	1860	1923	2001	2023	2079	1954	1928	1789	1897			
Adversary Proceedings													AP
Filed	5	17	19	5	4	6	4	5	7	5			77
Closed	7	7	4	6	7	6	20	6	8	15			86
Total Adversaries Pending	81	91	106	106	103	103	87	86	86	76			

Monthly Bankruptcy Filings



Monthly Adversary Filings



United States Bankruptcy Court - District of New Mexico
 Pro Se Filings

	Jan	Feb	Mar	Apr	May	Jun	Jul	Aug	Sep	Oct	Nov	Dec	YTD Total
2018	245	249	328	269	301	296	241	293	258	282	258	215	3,235
pro se 7	22	20	22	20	38	29	32	29	19	21	20	25	297
pro se 13	2	2	5	1	1	2	2	4	3	4	2	2	30
pro se with BPP	16	11	16	14	29	15	23	19	12	8	10	16	189
% Of Bankruptcies Filed	9.8%	8.84%	8.23%	7.81%	12.96%	10.47%	14.11%	11.6%	8.53%	8.87%	8.53%	12.56%	10.11%
2019	221	233	301	298	280	248	223	252	209	264			2,529
pro se 7	27	18	23	26	18	15	19	19	22	30			217
pro se 13	4	8	7	3	6	8	6	7	4	5			58
pro se with BPP	19	10	14	15	11	10	9	8	11	18			125
% Of Bankruptcies Filed	14.03%	11.16%	9.97%	9.73%	8.93%	9.27%	11.21%	10.32%	12.44%	13.26%			10.87%
	Jan	Feb	Mar	Apr	May	Jun	Jul	Aug	Sep	Oct	Nov	Dec	YTD Total