

United States Bankruptcy Court
District of New Mexico

June 3, 2019

CM/ECF Real Time Statistics

May 2019 Report

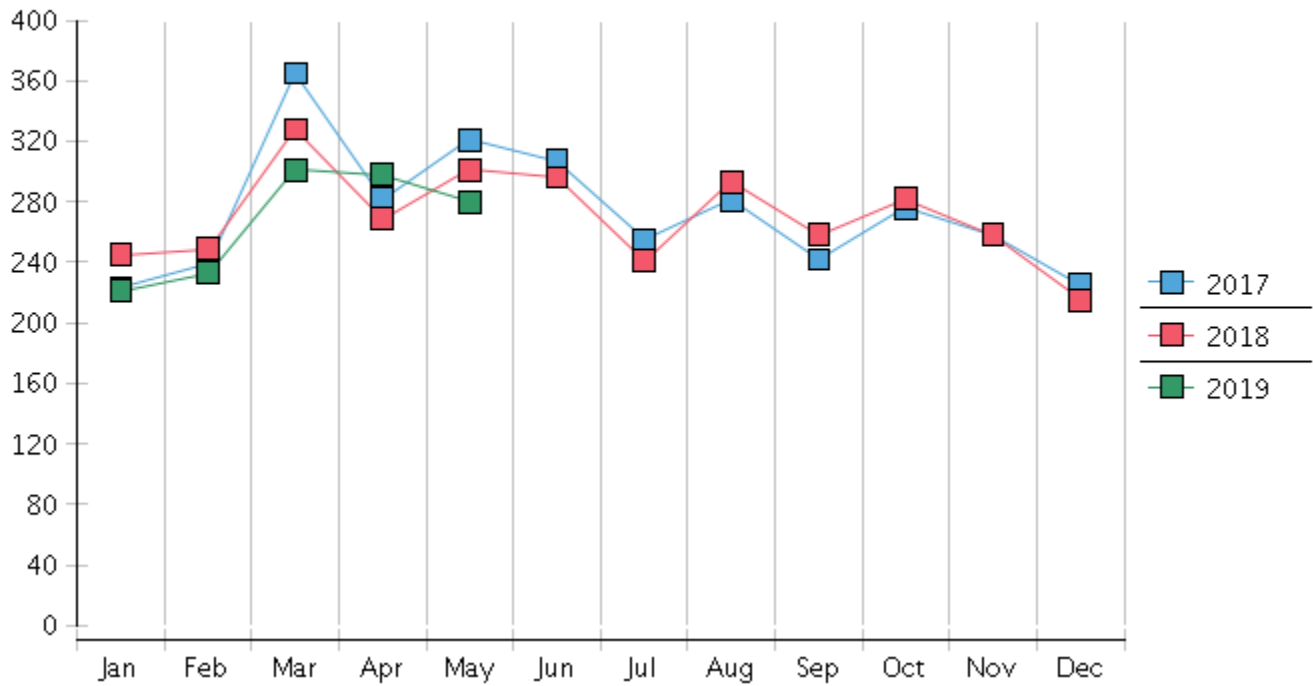
Capsule View	May 2019	Apr 2019	May 2018	% Change	
	this month	last month	this month last year	from last month	from this month last year
Bankruptcies Filed					
Chapter 7	246	258	265	-4.65%	-7.17%
Chapter 11	4	0	4	400%	0%
Chapter 12	0	0	0	0%	0%
Chapter 13	30	40	32	-25%	-6.25%
TOTAL BANKRUPTCY FILINGS	280	298	301	-6.04%	-6.98%
Adversaries					
Adversaries Filed	4	5	7	-20%	-42.86%
YEAR-TO-DATE					
	2019(CY)		2018(LY)	% Change	
BANKRUPTCIES FILED²				CY - LY	
Chapter 7	1,156		1,239	-6.7%	
Chapter 11	9		8	12.5%	
Chapter 12	0		0	0%	
Chapter 13	168		145	15.86%	
<u>TOTAL FILINGS</u>	1,333		1,392	-4.24%	
BANKRUPTCIES PENDING⁽¹⁾⁽²⁾					
Chapter 7	1,080		1,208	-10.6%	
Chapter 11	40		48	-16.67%	
Chapter 12	3		6	-50%	
Chapter 13	900		777	15.83%	
<u>TOTAL PENDING</u>	2,023		2,039	-0.78%	
ADVERSARY PROCEEDINGS					
Filed	49		31	58.06%	
<u>TOTAL PENDING¹</u>	102		120	-15%	
AVERAGES					
Chapter 7 Average Disposition ³ in Days	125		115	8.7%	
Chapter 13 Average Disposition ³ in Days	831		939	-11.5%	
Chapter 13 Average Days to Confirmation	142		134	5.97%	

1 Pending totals are generated from CM/ECF on a time frame ending on the last day of the month.

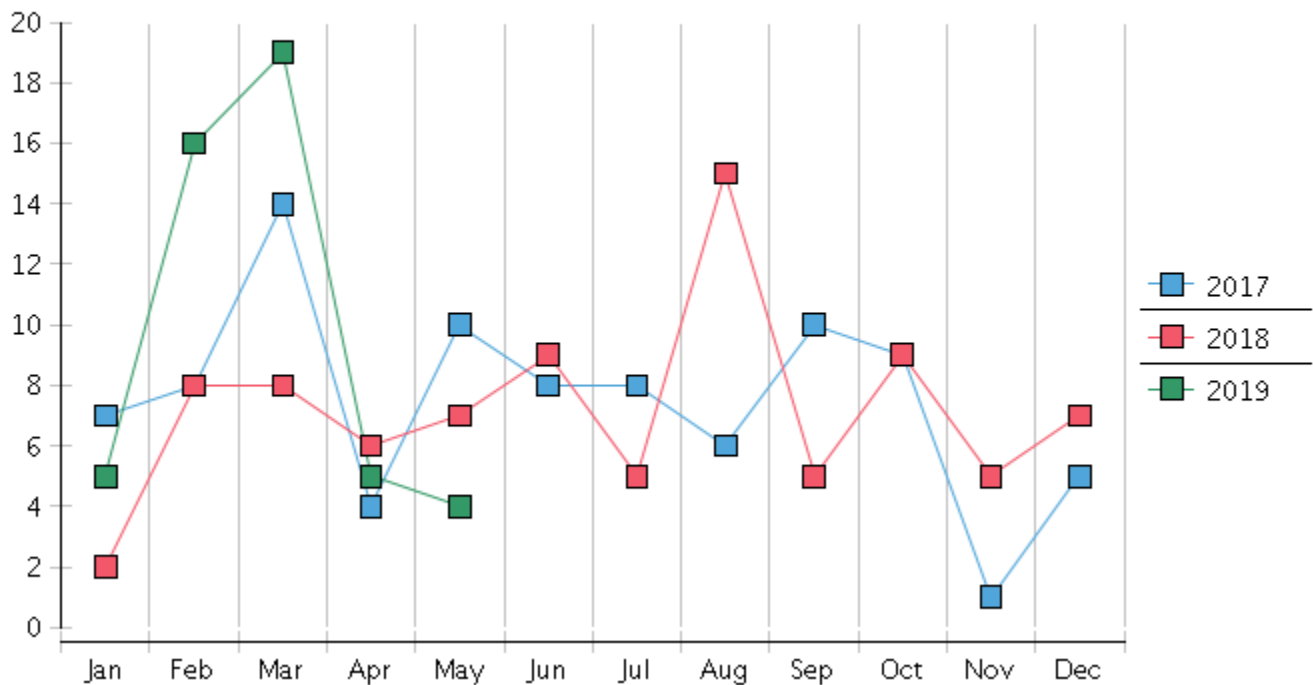
2 Chapter breakdowns are pulled from the Dynamic CM/ECF Database and may change over time due to conversions or other case changes.

3. Average disposition represents number of days from filing to discharge/dismissal of case.

Monthly Bankruptcy Filings



Monthly Adversary Filings



United States Bankruptcy Court - District of New Mexico
Pro Se Filings

	Jan	Feb	Mar	Apr	May	Jun	Jul	Aug	Sep	Oct	Nov	Dec	YTD Total
2018	245	249	328	269	301	296	241	293	258	282	258	215	3,235
pro se 7	22	20	22	20	38	29	32	29	19	21	20	25	297
pro se 13	2	2	5	1	1	2	2	4	3	4	2	2	30
pro se with BPP	16	11	16	14	29	15	23	19	12	8	10	16	189
% Of Bankruptcies Filed	9.8%	8.84%	8.23%	7.81%	12.96%	10.47%	14.11%	11.6%	8.53%	8.87%	8.53%	12.56%	10.11%
2019	221	233	301	298	280								1,333
pro se 7	27	18	23	26	18								112
pro se 13	4	8	7	3	6								28
pro se with BPP	19	10	14	15	11								69
% Of Bankruptcies Filed	14.03%	11.16%	9.97%	9.73%	8.93%								10.5%
	Jan	Feb	Mar	Apr	May	Jun	Jul	Aug	Sep	Oct	Nov	Dec	YTD Total

*19-11196-j11 - pro se chapter 11 filed 5/21/19