

United States Bankruptcy Court
District of New Mexico

June 1, 2018

CM/ECF Real Time Statistics

May 2018 Report

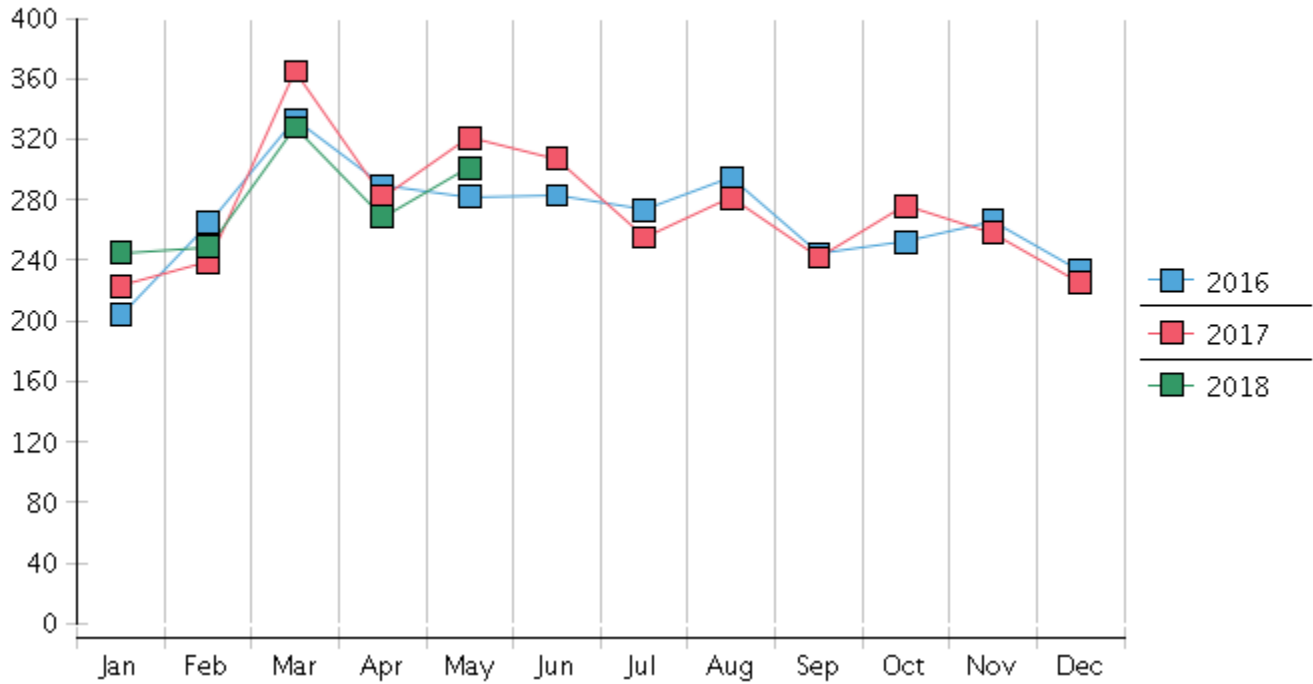
Capsule View	May 2018	Apr 2018	May 2017	% Change	
	this month	last month	this month last year	from last month	from this month last year
Bankruptcies Filed					
Chapter 7	265	240	285	10.42%	-7.02%
Chapter 11	4	2	5	100%	-20%
Chapter 12	0	0	0	0%	0%
Chapter 13	32	27	31	18.52%	3.23%
TOTAL BANKRUPTCY FILINGS	301	269	321	11.9%	-6.23%
Adversaries					
Adversaries Filed	7	6	10	16.67%	-30%
YEAR-TO-DATE					
	2018(CY)		2017(LY)	% Change	
BANKRUPTCIES FILED²				CY - LY	
Chapter 7	1,239		1,283	-3.43%	
Chapter 11	8		16	-50%	
Chapter 12	0		2	-200%	
Chapter 13	145		129	12.4%	
<u>TOTAL FILINGS</u>	1,392		1,430	-2.66%	
BANKRUPTCIES PENDING⁽¹⁾⁽²⁾					
Chapter 7	1,138		1,284	-11.44%	
Chapter 11	71		76	-6.58%	
Chapter 12	6		7	-14.29%	
Chapter 13	824		784	5.1%	
<u>TOTAL PENDING</u>	2,039		2,151	-5.21%	
ADVERSARY PROCEEDINGS					
Filed	31		43	-27.91%	
<u>TOTAL PENDING¹</u>	120		123	-2.44%	
AVERAGES					
Chapter 7 Average Disposition ³ in Days	115		126	-8.73%	
Chapter 13 Average Disposition ³ in Days	954		1060	-10%	
Chapter 13 Average Days to Confirmation	134		121	10.74%	

1 Pending totals are generated from CM/ECF on a time frame ending on the last day of the month.

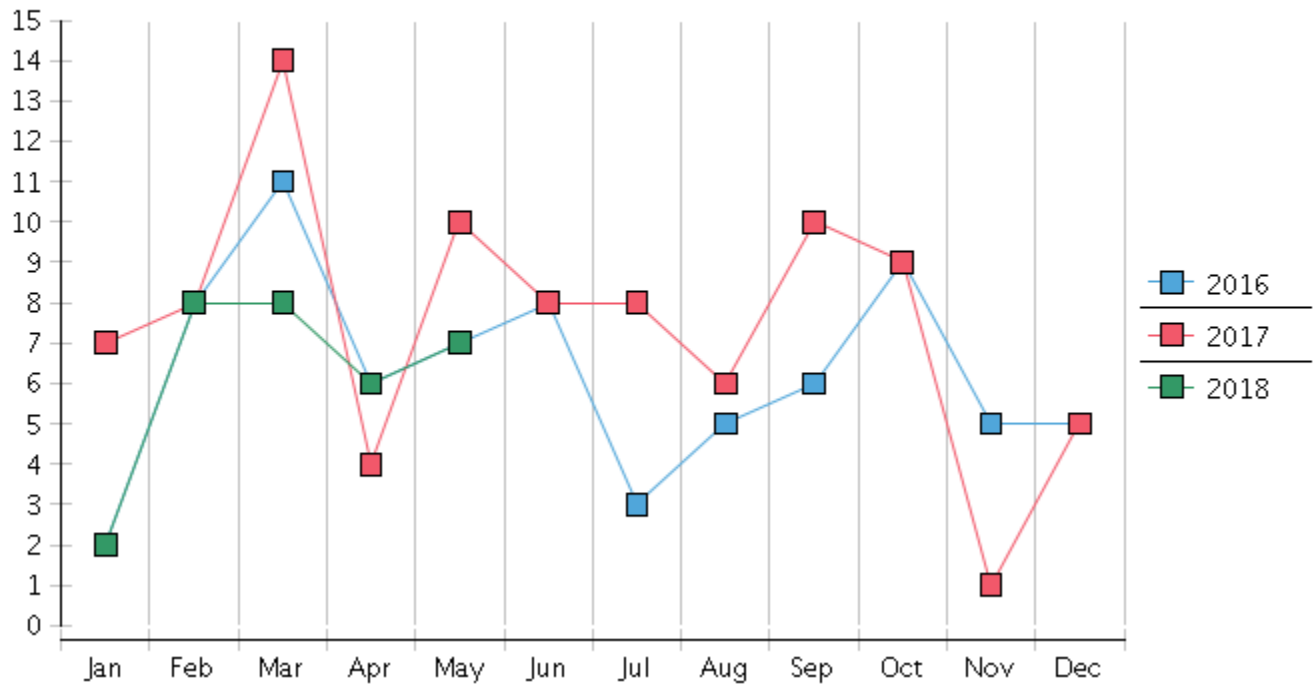
2 Chapter breakdowns are pulled from the Dynamic CM/ECF Database and may change over time due to conversions or other case changes.

3. Average disposition represents number of days from filing to discharge/dismissal of case.

Monthly Bankruptcy Filings



Monthly Adversary Filings



United States Bankruptcy Court - District of New Mexico
 Pro Se Filings

	Jan	Feb	Mar	Apr	May	Jun	Jul	Aug	Sep	Oct	Nov	Dec	YTD Total
2017	223	239	365	282	321	307	255	281	242	276	258	225	3,274
pro se 7	21	20	26	27	31	23	21	28	20	34	28	20	299
pro se 13	2	3	5	1	5	2	5	3	1	4	4	1	36
pro se with BPP	15	11	18	19	22	15	17	21	12	23	18	13	204
% Of Bankruptcies Filed	10.31%	9.62%	8.77%	9.93%	11.21%	8.14%	10.2%	11.03%	8.68%	13.77%	12.4%	9.33%	10.23%
2018	245	249	328	269	301								1,392
pro se 7	22	20	22	20	38								122
pro se 13	2	2	5	1	1								11
pro se with BPP	16	11	16	14	29								86
% Of Bankruptcies Filed	9.8%	8.84%	8.23%	7.81%	12.96%								9.55%
	Jan	Feb	Mar	Apr	May	Jun	Jul	Aug	Sep	Oct	Nov	Dec	YTD Total