

United States Bankruptcy Court  
District of New Mexico

April 5, 2018

CM/ECF Real Time Statistics

**March 2018 Report**

Capsule View	Mar 2018	Feb 2018	Mar 2017	% Change	
	this month	last month	this month last year	from last month	from this month last year
<b>Bankruptcies Filed</b>					
Chapter 7	288	230	327	25.22%	-11.93%
Chapter 11	1	1	6	0%	-83.33%
Chapter 12	0	0	0	0%	0%
Chapter 13	39	18	32	116.67%	21.88%
<b>TOTAL BANKRUPTCY FILINGS</b>	<b>328</b>	<b>249</b>	<b>365</b>	<b>31.73%</b>	<b>-10.14%</b>
<b>Adversaries</b>					
Adversaries Filed	8	8	14	0%	-42.86%
<b>YEAR-TO-DATE</b>					
	<b>2018(CY)</b>	<b>2017(LY)</b>	<b>% Change</b>		
<b>BANKRUPTCIES FILED<sup>2</sup></b>			<b>CY - LY</b>		
Chapter 7	734	739	-0.68%		
Chapter 11	2	11	-81.82%		
Chapter 12	0	2	-200%		
Chapter 13	86	75	14.67%		
<b><u>TOTAL FILINGS</u></b>	<b>822</b>	<b>827</b>	<b>-0.6%</b>		
<b>BANKRUPTCIES PENDING<sup>(1)(2)</sup></b>					
Chapter 7	1,070	1,101	-2.82%		
Chapter 11	73	76	-3.95%		
Chapter 12	6	7	-14.29%		
Chapter 13	804	784	2.55%		
<b><u>TOTAL PENDING</u></b>	<b>1,953</b>	<b>1,968</b>	<b>-0.76%</b>		
<b>ADVERSARY PROCEEDINGS</b>					
Filed	18	29	-37.93%		
<b><u>TOTAL PENDING<sup>1</sup></u></b>	<b>122</b>	<b>123</b>	<b>-0.81%</b>		
<b>AVERAGES</b>					
Chapter 7 Average Disposition <sup>3</sup> in Days	115	122	-5.74%		
Chapter 13 Average Disposition <sup>3</sup> in Days	957	982	-2.55%		
Chapter 13 Average Days to Confirmation	130	115	13.04%		

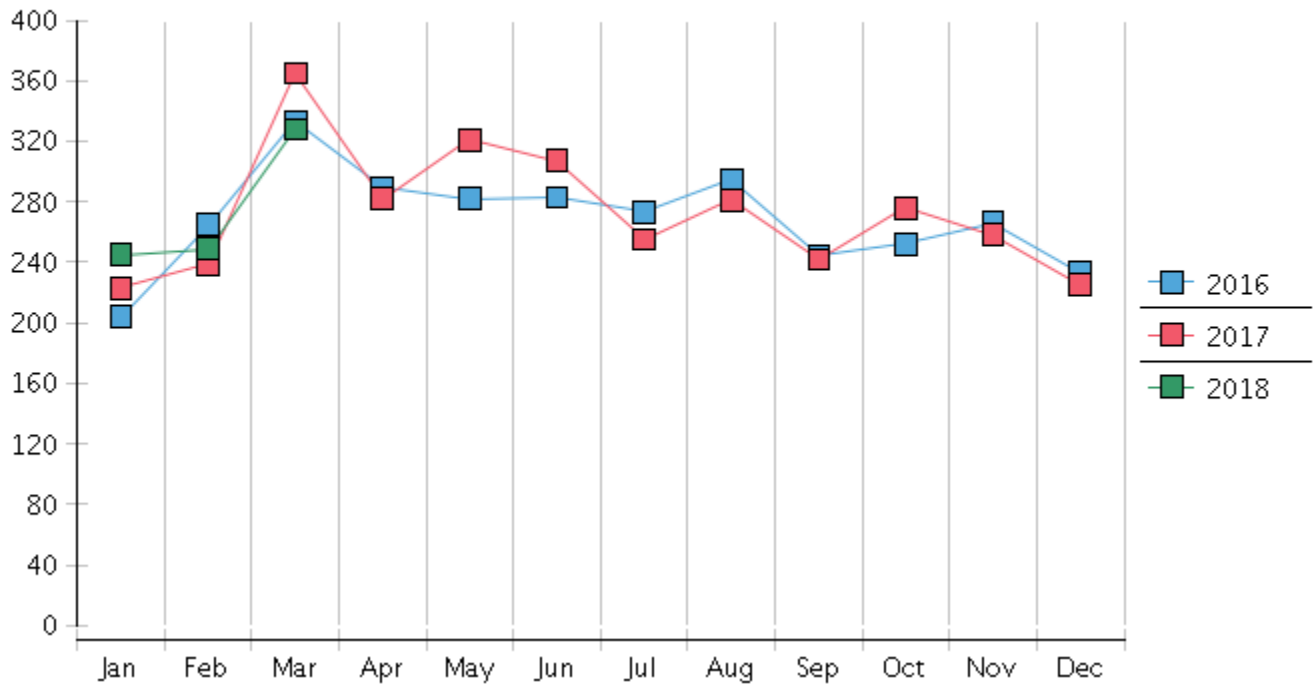
1 Pending totals are generated from CM/ECF on a time frame ending on the last day of the month.

2 Chapter breakdowns are pulled from the Dynamic CM/ECF Database and may change over time due to conversions or other case changes.

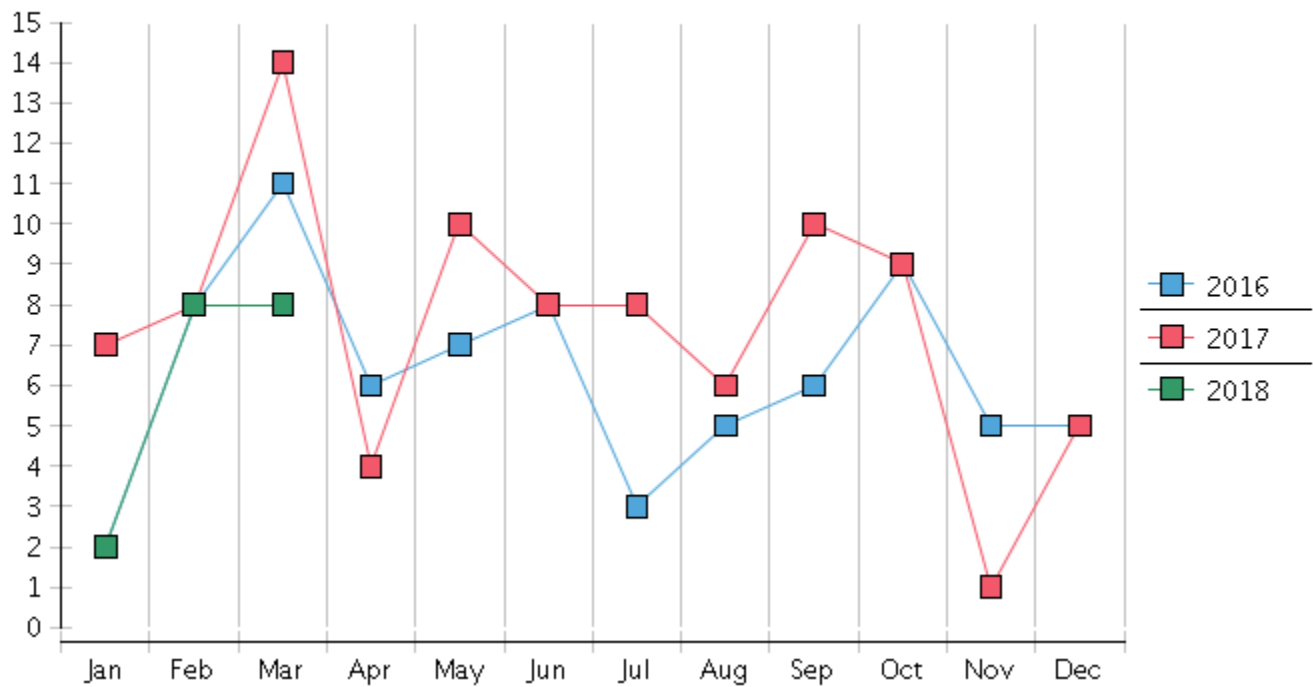
3. Average disposition represents number of days from filing to discharge/dismissal of case.



### Monthly Bankruptcy Filings



### Monthly Adversary Filings



United States Bankruptcy Court - District of New Mexico  
 Pro Se Filings

	Jan	Feb	Mar	Apr	May	Jun	Jul	Aug	Sep	Oct	Nov	Dec	YTD Total
2017	223	239	365	282	321	307	255	281	242	276	258	225	3,274
pro se 7	21	20	26	27	31	23	21	28	20	34	28	20	299
pro se 13	2	3	5	1	5	2	5	3	1	4	4	1	36
pro se with BPP	15	11	18	19	22	15	17	21	12	23	18	13	204
% Of Bankruptcies Filed	10.31%	9.62%	8.77%	9.93%	11.21%	8.14%	10.2%	11.03%	8.68%	13.77%	12.4%	9.33%	10.23%
2018	245	249	328										822
pro se 7	22	20	22										64
pro se 13	2	2	5										9
pro se with BPP	16	11	16										43
% Of Bankruptcies Filed	9.8%	8.84%	8.23%										8.88%
	Jan	Feb	Mar	Apr	May	Jun	Jul	Aug	Sep	Oct	Nov	Dec	YTD Total