

United States Bankruptcy Court
District of New Mexico

July 1, 2019

CM/ECF Real Time Statistics

June 2019 Report

Capsule View	Jun 2019	May 2019	Jun 2018	% Change	
	this month	last month	this month last year	from last month	from this month last year
Bankruptcies Filed					
Chapter 7	198	246	254	-19.51%	-22.05%
Chapter 11	4	4	1	0%	300%
Chapter 12	0	0	0	0%	0%
Chapter 13	46	30	41	53.33%	12.2%
TOTAL BANKRUPTCY FILINGS	248	280	296	-11.43%	-16.22%
Adversaries					
Adversaries Filed	6	4	9	50%	-33.33%
YEAR-TO-DATE					
	2019(CY)		2018(LY)	% Change	
BANKRUPTCIES FILED²				CY - LY	
Chapter 7	1,354		1,493	-9.31%	
Chapter 11	13		9	44.44%	
Chapter 12	0		0	0%	
Chapter 13	214		186	15.05%	
<u>TOTAL FILINGS</u>	1,581		1,688	-6.34%	
BANKRUPTCIES PENDING⁽¹⁾⁽²⁾					
Chapter 7	1,130		1,187	-4.8%	
Chapter 11	42		47	-10.64%	
Chapter 12	3		6	-50%	
Chapter 13	904		788	14.72%	
<u>TOTAL PENDING</u>	2,079		2,028	2.51%	
ADVERSARY PROCEEDINGS					
Filed	56		40	40%	
<u>TOTAL PENDING¹</u>	103		121	-14.88%	
AVERAGES					
Chapter 7 Average Disposition ³ in Days	124		117	5.98%	
Chapter 13 Average Disposition ³ in Days	916		1008	-9.13%	
Chapter 13 Average Days to Confirmation	147		133	10.53%	

1 Pending totals are generated from CM/ECF on a time frame ending on the last day of the month.

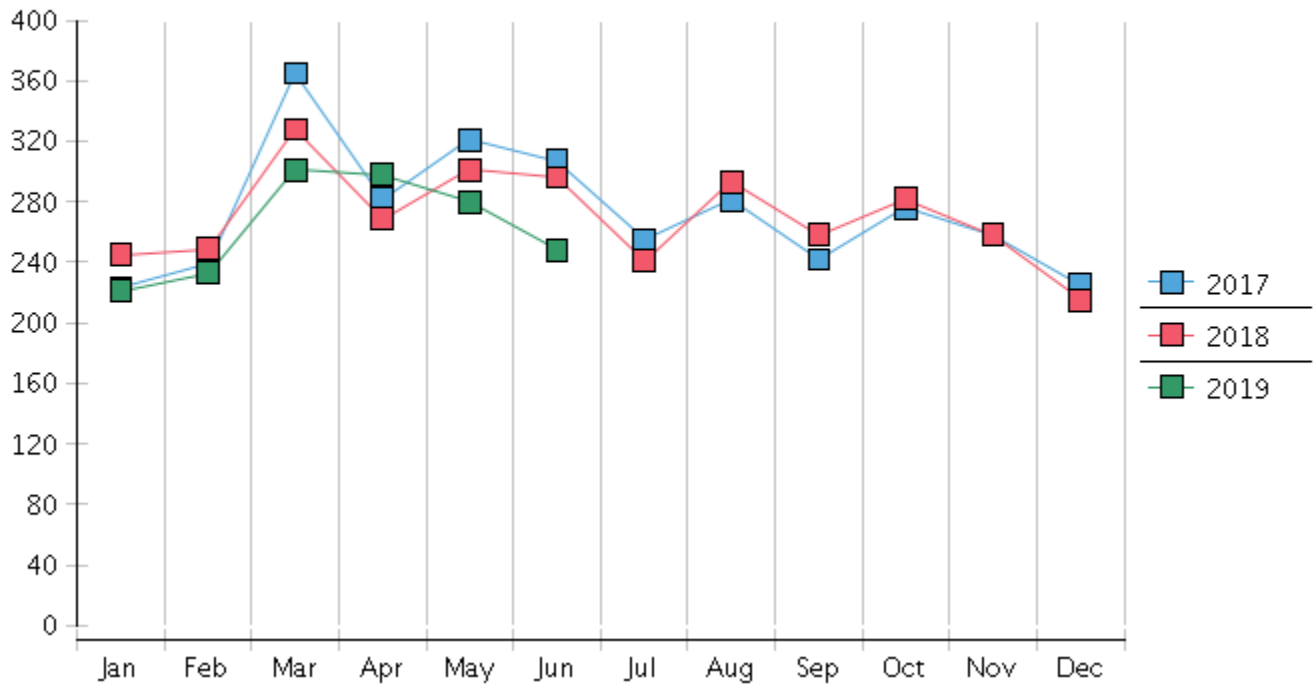
2 Chapter breakdowns are pulled from the Dynamic CM/ECF Database and may change over time due to conversions or other case changes.

3. Average disposition represents number of days from filing to discharge/dismissal of case.

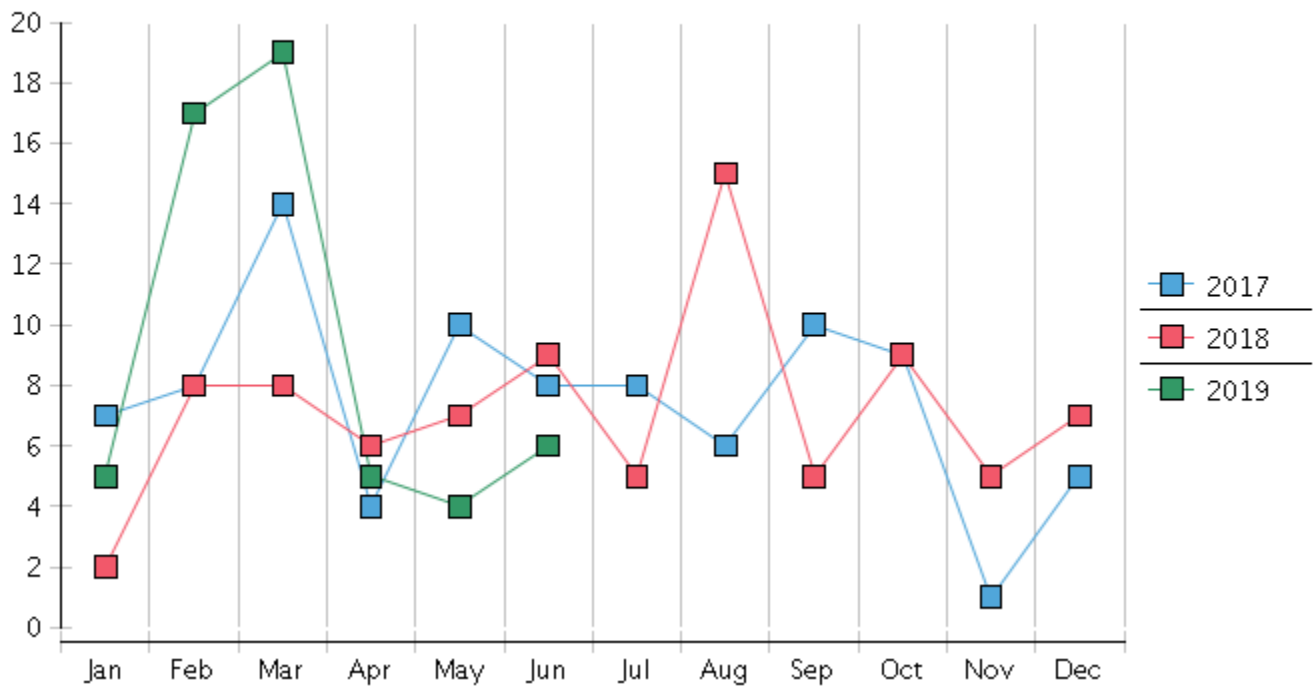
United States Bankruptcy Court - District of New Mexico
 Statistics - Year-To-Date Totals

2019	January	February	March	April	May	June	July	August	September	October	November	December	Total YTD
FILED													FILED
Chapter 7 Combined	194	196	262	258	246	198							1354
Chapter 11	0	3	2	0	4	4							13
Chapter 12	0	0	0	0	0	0							0
Chapter 13	27	34	37	40	30	46							214
Total Filed for Month	221	233	301	298	280	248							
Totals Filed Year-to-Date	221	454	755	1053	1333	1581							1581
CLOSED													CLOSED
Chapter 7 Combined Total	199	305	223	204	227	154							1312
Asset	1	1	4	4	2	4							16
No Asset	198	304	219	200	225	150							1296
Chapter 11	3	2	1	3	4	2							15
Chapter 12	0	1	1	1	0	0							3
Chapter 13	24	25	16	19	33	37							154
Totals Closed for Month	226	333	241	227	264	193							
Totals Closed Year-to-Date	226	559	800	1027	1291	1484							1484
Closing Breakdown													
Closed by Case Managers	66	58	50	53	63	56							346
Closed Automatically	160	275	191	174	201	137							1138
Percent Closed by Case Managers	29.2%	17.42%	20.75%	23.35%	23.86%	29.02%							23.32%
Percent Closed Automatically	70.8%	82.58%	79.25%	76.65%	76.14%	70.98%							76.68%
PENDING													
Chapter 7	1042	940	997	1059	1085	1130							
Chapter 11	43	44	43	40	40	42							
Chapter 12	6	5	4	3	3	3							
Chapter 13	864	871	879	899	895	904							
Total Pending for Month	1955	1860	1923	2001	2023	2079							
Adversary Proceedings													AP
Filed	5	17	19	5	4	6							56
Closed	7	7	4	6	7	6							37
Total Adversaries Pending	81	91	106	106	103	103							

Monthly Bankruptcy Filings



Monthly Adversary Filings



United States Bankruptcy Court - District of New Mexico
 Pro Se Filings

	Jan	Feb	Mar	Apr	May	Jun	Jul	Aug	Sep	Oct	Nov	Dec	YTD Total
2018	245	249	328	269	301	296	241	293	258	282	258	215	3,235
pro se 7	22	20	22	20	38	29	32	29	19	21	20	25	297
pro se 13	2	2	5	1	1	2	2	4	3	4	2	2	30
pro se with BPP	16	11	16	14	29	15	23	19	12	8	10	16	189
% Of Bankruptcies Filed	9.8%	8.84%	8.23%	7.81%	12.96%	10.47%	14.11%	11.6%	8.53%	8.87%	8.53%	12.56%	10.11%
2019	221	233	301	298	280	248							1,581
pro se 7	27	18	23	26	18	15							127
pro se 13	4	8	7	3	6	8							36
pro se with BPP	19	10	14	15	11	10							79
% Of Bankruptcies Filed	14.03%	11.16%	9.97%	9.73%	8.93%	9.27%							10.31%
	Jan	Feb	Mar	Apr	May	Jun	Jul	Aug	Sep	Oct	Nov	Dec	YTD Total