

United States Bankruptcy Court
District of New Mexico

July 3, 2018

CM/ECF Real Time Statistics

June 2018 Report

Capsule View	Jun 2018	May 2018	Jun 2017	% Change	
	this month	last month	this month last year	from last month	from this month last year
Bankruptcies Filed					
Chapter 7	254	265	285	-4.15%	-10.88%
Chapter 11	1	4	2	-75%	-50%
Chapter 12	0	0	0	0%	0%
Chapter 13	41	32	20	28.13%	105%
TOTAL BANKRUPTCY FILINGS	296	301	307	-1.66%	-3.58%
Adversaries					
Adversaries Filed	9	7	8	28.57%	12.5%
YEAR-TO-DATE	2018(CY)	2017(LY)	% Change		
BANKRUPTCIES FILED ²				CY - LY	
Chapter 7	1,493	1,568	-4.78%		
Chapter 11	9	18	-50%		
Chapter 12	0	2	-200%		
Chapter 13	186	149	24.83%		
<u>TOTAL FILINGS</u>	1,688	1,737	-2.82%		
BANKRUPTCIES PENDING⁽¹⁾⁽²⁾					
Chapter 7	1,114	1,253	-11.09%		
Chapter 11	70	76	-7.89%		
Chapter 12	6	7	-14.29%		
Chapter 13	838	775	8.13%		
<u>TOTAL PENDING</u>	2,028	2,111	-3.93%		
ADVERSARY PROCEEDINGS					
Filed	40	51	-21.57%		
<u>TOTAL PENDING¹</u>	121	127	-4.72%		
AVERAGES					
Chapter 7 Average Disposition ³ in Days	117	124	-5.65%		
Chapter 13 Average Disposition ³ in Days	1019	1090	-6.51%		
Chapter 13 Average Days to Confirmation	133	123	8.13%		

1 Pending totals are generated from CM/ECF on a time frame ending on the last day of the month.

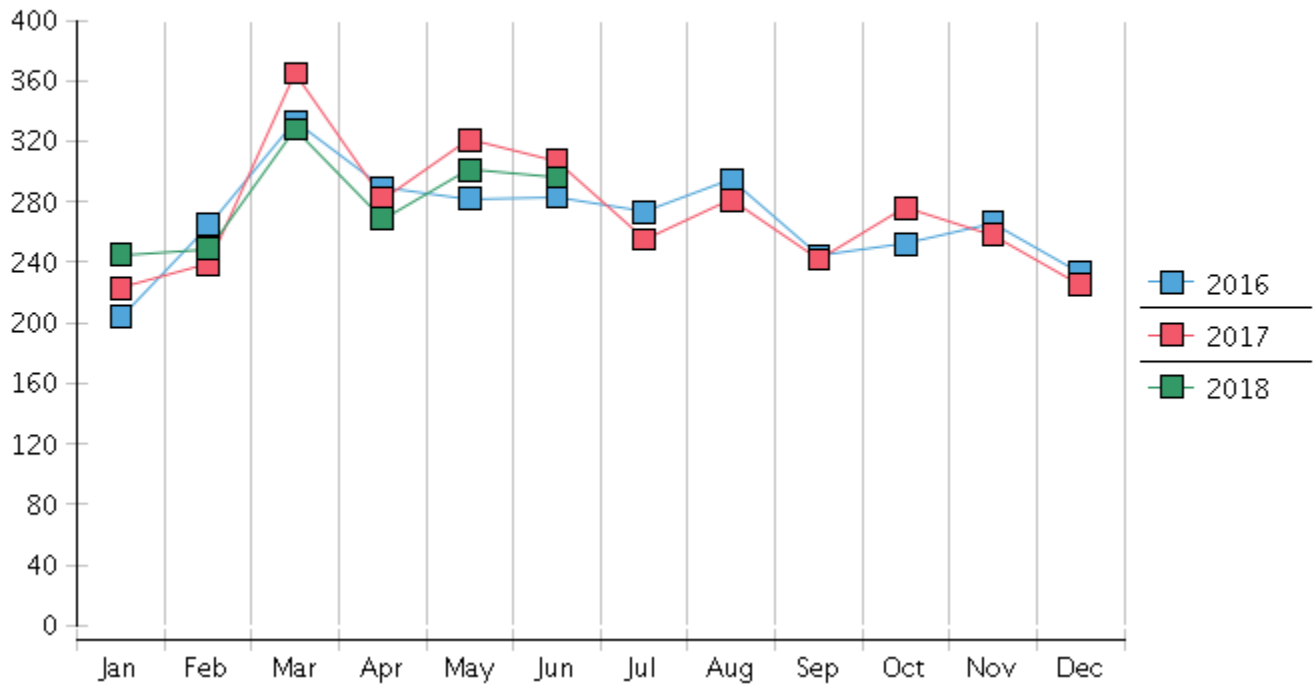
2 Chapter breakdowns are pulled from the Dynamic CM/ECF Database and may change over time due to conversions or other case changes.

3. Average disposition represents number of days from filing to discharge/dismissal of case.

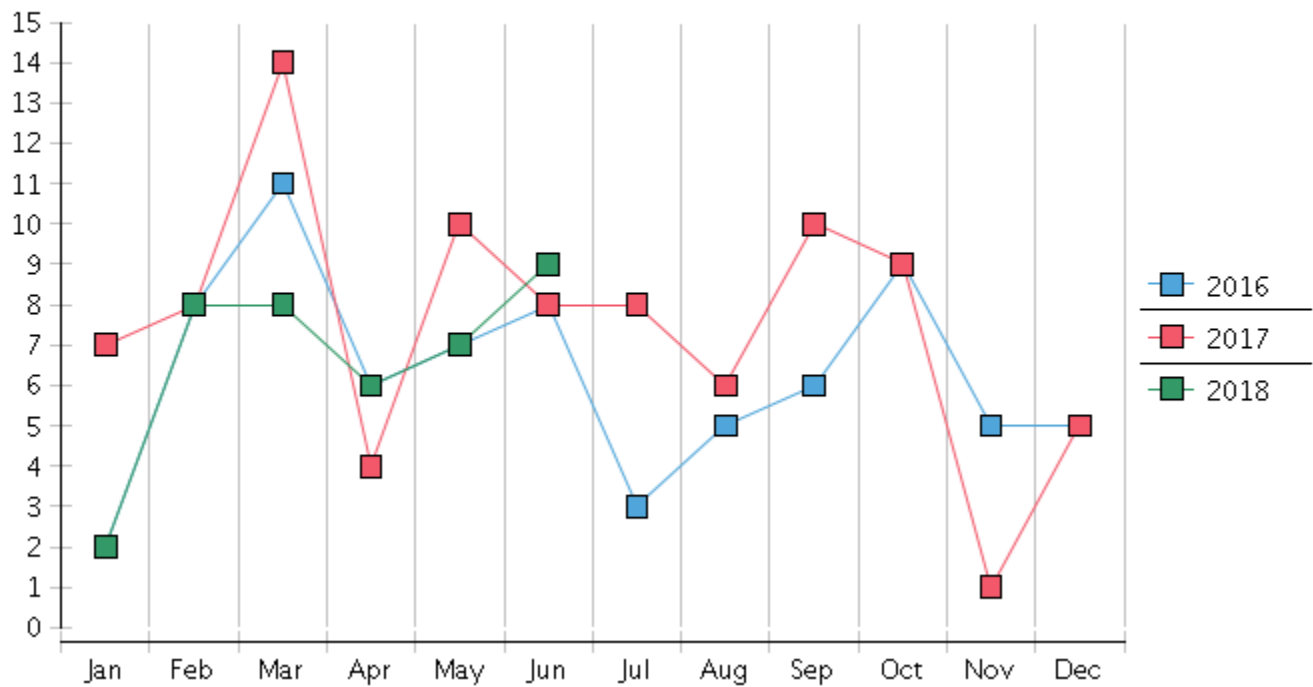
United States Bankruptcy Court - District of New Mexico
 Statistics - Year-To-Date Totals

2018	January	February	March	April	May	June	July	August	September	October	November	December	Total YTD
FILED													FILED
Chapter 7 Combined	216	230	288	240	265	254							1493
Chapter 11	0	1	1	2	4	1							9
Chapter 12	0	0	0	0	0	0							0
Chapter 13	29	18	39	27	32	41							186
Total Filed for Month	245	249	328	269	301	296							
Totals Filed Year-to-Date	245	494	822	1091	1392	1688							1688
CLOSED													CLOSED
Chapter 7 Combined Total	237	249	202	183	266	286							1423
Asset	9	3	4	3	7	15							41
No Asset	228	246	198	180	259	271							1382
Chapter 11	2	1	3	2	5	2							15
Chapter 12	0	0	0	0	0	0							0
Chapter 13	28	20	23	18	16	19							124
Totals Closed for Month	267	270	228	203	287	307							
Totals Closed Year-to-Date	267	537	765	968	1255	1562							1562
Closing Breakdown													
Closed by Case Managers	52	41	48	46	49	72							308
Closed Automatically	215	229	180	157	238	235							1254
Percent Closed by Case Managers	19.48%	15.19%	21.05%	22.66%	17.07%	23.45%							19.72%
Percent Closed Automatically	80.52%	84.81%	78.95%	77.34%	82.93%	76.55%							80.28%
PENDING													
Chapter 7	1011	989	1083	1140	1143	1114							
Chapter 11	77	76	73	74	71	70							
Chapter 12	6	6	6	6	6	6							
Chapter 13	769	776	791	801	819	838							
Total Pending for Month	1863	1847	1953	2021	2039	2028							
Adversary Proceedings													AP
Filed	2	8	8	6	7	9							40
Closed	4	2	15	4	11	8							44
Total Adversaries Pending	122	129	122	124	120	121							

Monthly Bankruptcy Filings



Monthly Adversary Filings



United States Bankruptcy Court - District of New Mexico
Pro Se Filings

	Jan	Feb	Mar	Apr	May	Jun	Jul	Aug	Sep	Oct	Nov	Dec	YTD Total
2017	223	239	365	282	321	307	255	281	242	276	258	225	3,274
pro se 7	21	20	26	27	31	23	21	28	20	34	28	20	299
pro se 13	2	3	5	1	5	2	5	3	1	4	4	1	36
pro se with BPP	15	11	18	19	22	15	17	21	12	23	18	13	204
% Of Bankruptcies Filed	10.31%	9.62%	8.77%	9.93%	11.21%	8.14%	10.2%	11.03%	8.68%	13.77%	12.4%	9.33%	10.23%
2018	245	249	328	269	301	296							1,688
pro se 7	22	20	22	20	38	29							151
pro se 13	2	2	5	1	1	2							13
pro se with BPP	16	11	16	14	29	15							101
% Of Bankruptcies Filed	9.8%	8.84%	8.23%	7.81%	12.96%	10.47%							9.72%
	Jan	Feb	Mar	Apr	May	Jun	Jul	Aug	Sep	Oct	Nov	Dec	YTD Total