

United States Bankruptcy Court

District of New Mexico

February 1, 2019

CM/ECF Real Time Statistics

January 2019 Report

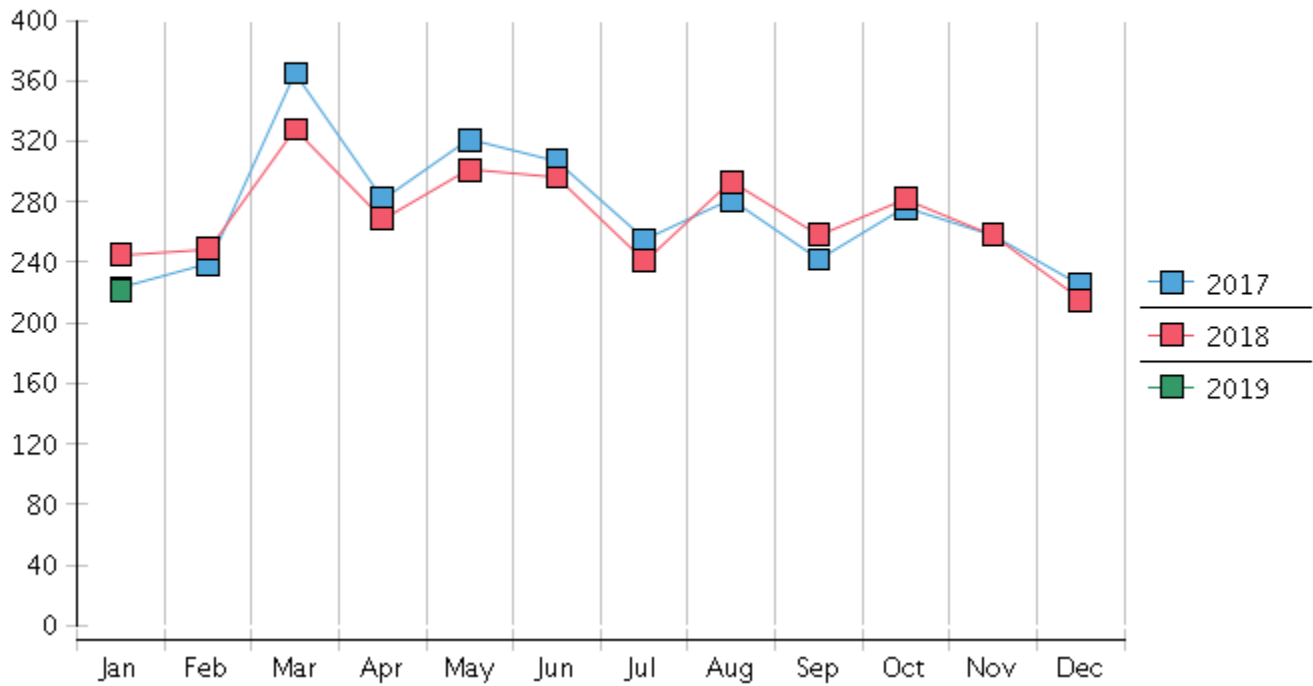
Capsule View	Jan 2019	Dec 2018	Jan 2018	% Change	
	this month	last month	this month last year	from last month	from this month last year
Bankruptcies Filed					
Chapter 7	194	187	216	3.74%	-10.19%
Chapter 11	0	2	0	-200%	0%
Chapter 12	0	0	0	0%	0%
Chapter 13	27	26	29	3.85%	-6.9%
TOTAL BANKRUPTCY FILINGS	221	215	245	2.79%	-9.8%
Adversaries					
Adversaries Filed	5	7	2	-28.57%	150%
YEAR-TO-DATE					
	2019(CY)	2018(LY)	% Change		
BANKRUPTCIES FILED²			CY - LY		
Chapter 7	194	216	-10.19%		
Chapter 11	0	0	0%		
Chapter 12	0	0	0%		
Chapter 13	27	29	-6.9%		
<u>TOTAL FILINGS</u>	221	245	-9.8%		
BANKRUPTCIES PENDING⁽¹⁾⁽²⁾					
Chapter 7	1,042	1,033	.87%		
Chapter 11	43	73	-41.10%		
Chapter 12	6	6	0%		
Chapter 13	864	751	15.05%		
<u>TOTAL PENDING</u>	1,955	1,863	4.94%		
ADVERSARY PROCEEDINGS					
Filed	5	2	150%		
<u>TOTAL PENDING¹</u>	81	122	-33.61%		
AVERAGES					
Chapter 7 Average Disposition ³ in Days	129	120	7.5%		
Chapter 13 Average Disposition ³ in Days	791	940	-15.85%		
Chapter 13 Average Days to Confirmation	137	127	7.87%		

1 Pending totals are generated from CM/ECF on a time frame ending on the last day of the month.

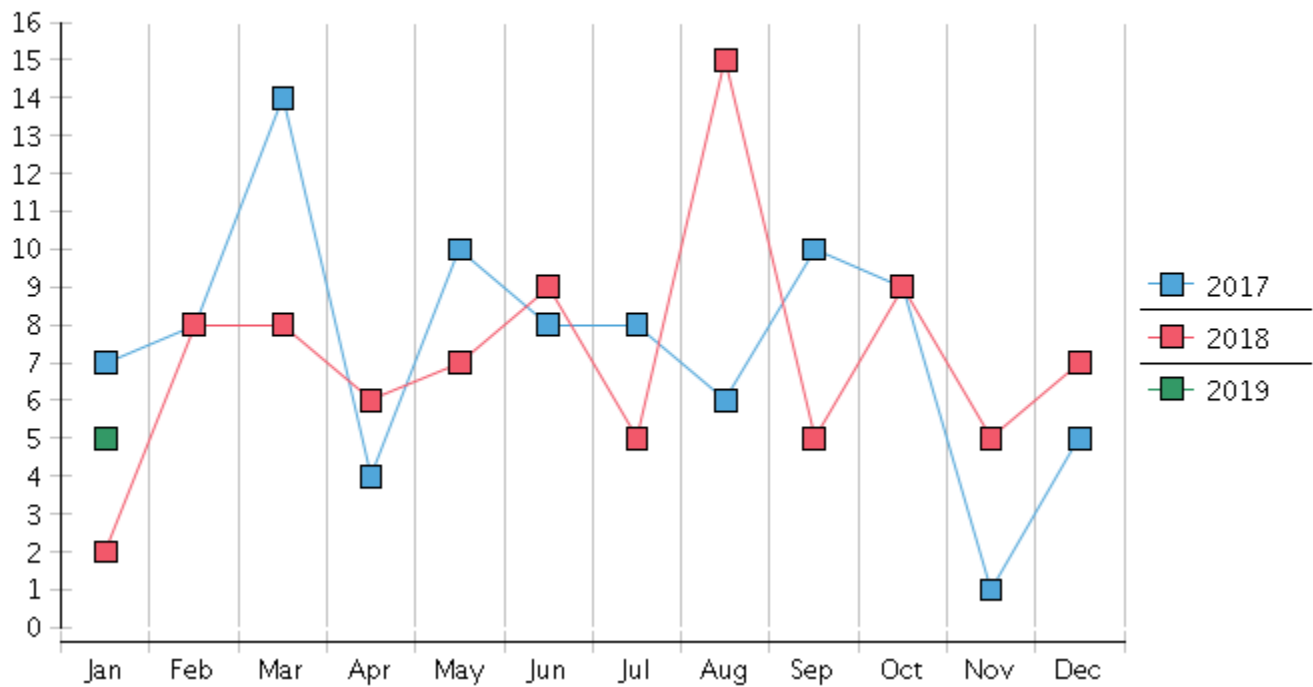
2 Chapter breakdowns are pulled from the Dynamic CM/ECF Database and may change over time due to conversions or other case changes.

3. Average disposition represents number of days from filing to discharge/dismissal of case.

Monthly Bankruptcy Filings



Monthly Adversary Filings



United States Bankruptcy Court - District of New Mexico
 Pro Se Filings

	Jan	Feb	Mar	Apr	May	Jun	Jul	Aug	Sep	Oct	Nov	Dec	YTD Total
2018	245	249	328	269	301	296	241	293	258	282	258	215	3,235
pro se 7	22	20	22	20	38	29	32	29	19	21	20	25	297
pro se 13	2	2	5	1	1	2	2	4	3	4	2	2	30
pro se with BPP	16	11	16	14	29	15	23	19	12	8	10	16	189
% Of Bankruptcies Filed	9.8%	8.84%	8.23%	7.81%	12.96%	10.47%	14.11%	11.6%	8.53%	8.87%	8.53%	12.56%	10.11%
2019	221												221
pro se 7	27												27
pro se 13	4												4
pro se with BPP	19												19
% Of Bankruptcies Filed	14.03%												14.03%
	Jan	Feb	Mar	Apr	May	Jun	Jul	Aug	Sep	Oct	Nov	Dec	YTD Total