

United States Bankruptcy Court  
District of New Mexico

March 1, 2018  
CM/ECF Real Time Statistics  
**February 2018 Report**

Capsule View	Feb 2018	Jan 2018	Feb 2017	% Change	
	this month	last month	this month last year	from last month	from this month last year
Bankruptcies Filed					
Chapter 7	230	216	220	6.48%	4.55%
Chapter 11	1	0	1	100.00%	0.00%
Chapter 12	0	0	1	0.00%	-100.00%
Chapter 13	18	29	17	-37.93%	5.88%
TOTAL BANKRUPTCY FILINGS	249	245	239	1.63%	4.18%
Adversaries					
Adversaries Filed	8	2	8	300.00%	0.00%
YEAR-TO-DATE	2018(CY)		2017(LY)	% Change	
BANKRUPTCIES FILED <sup>2</sup>				CY - LY	
Chapter 7	446		412	8.25%	
Chapter 11	1		5	-80.00%	
Chapter 12	0		2	-200.00%	
Chapter 13	47		43	9.30%	
<b><u>TOTAL FILINGS</u></b>	494		462	6.93%	
BANKRUPTCIES PENDING <sup>(1)(2)</sup>					
Chapter 7	996		962	3.53%	
Chapter 11	59		62	-4.84%	
Chapter 12	6		7	-14.29%	
Chapter 13	786		780	0.77%	
<b><u>TOTAL PENDING</u></b>	1,847		1,811	1.99%	
ADVERSARY PROCEEDINGS					
Filed	10		15	-33.33%	
<b><u>TOTAL PENDING<sup>1</sup></u></b>	129		111	16.22%	
AVERAGES					
Chapter 7 Average Disposition <sup>3</sup> in Days	115		125	-8.00%	
Chapter 13 Average Disposition <sup>3</sup> in Days	939		926	1.40%	
Chapter 13 Average Days to Confirmation	131		119	10.08%	

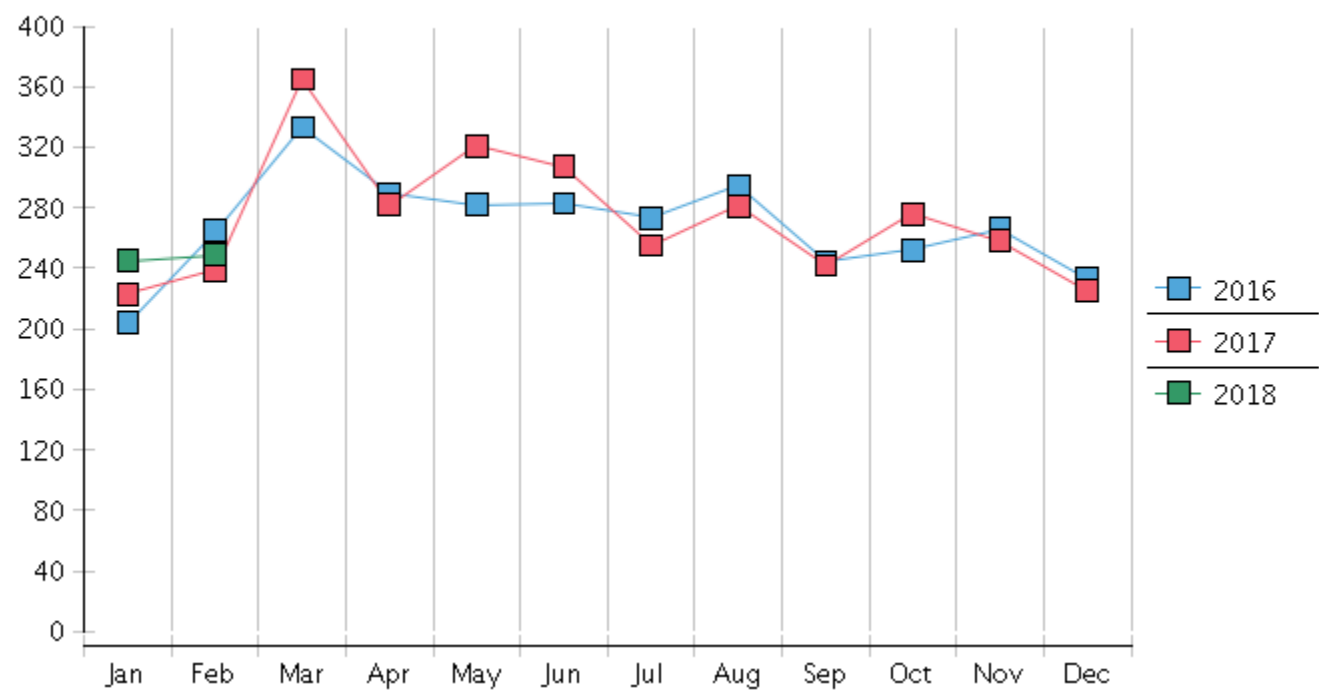
1 Pending totals are generated from CM/ECF on a time frame ending on the last day of the month.

2 Chapter breakdowns are pulled from the Dynamic CM/ECF Database and may change over time due to conversions or other case changes.

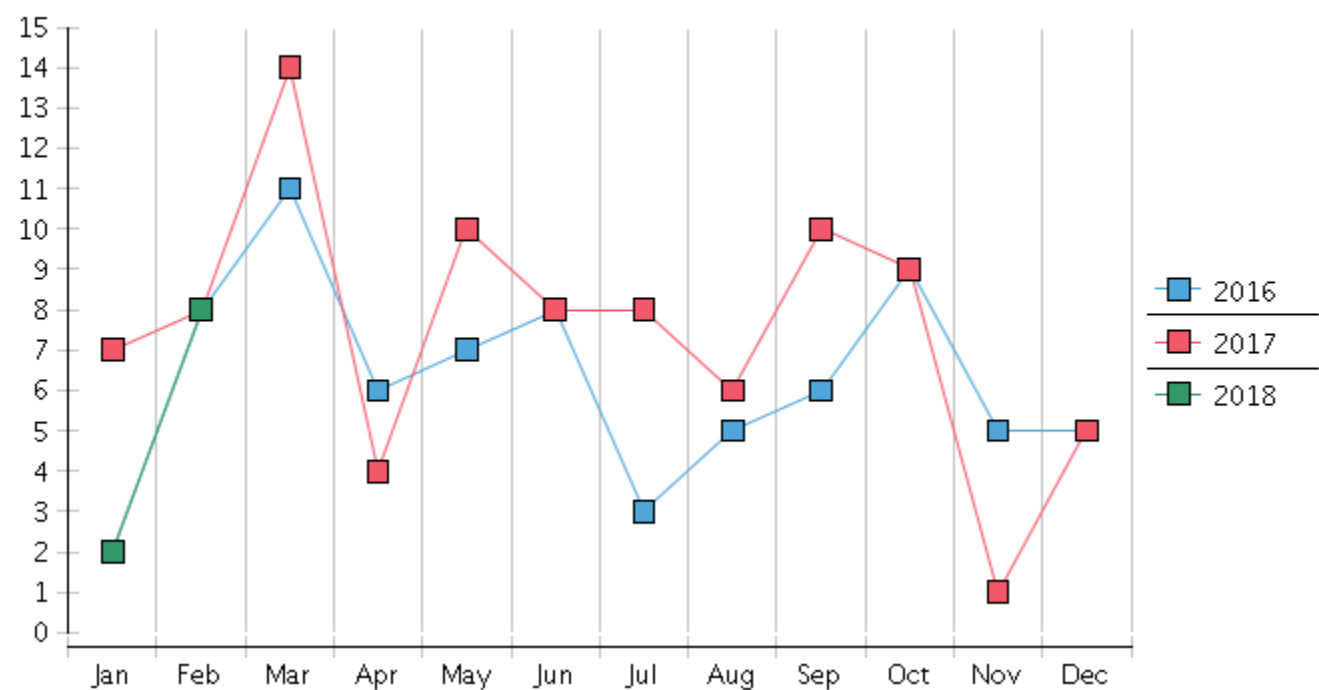
3 Average disposition represents number of days from filing to discharge/dismissal of case.

United States Bankruptcy Court - District of New Mexico  
Statistics - Year-To-Date Totals[illegible]

### Monthly Bankruptcy Filings



### Monthly Adversary Filings



United States Bankruptcy Court - District of New Mexico  
Pro Se Filings

	Jan	Feb	Mar	Apr	May	Jun	Jul	Aug	Sep	Oct	Nov	Dec	YTD Total
2017	223	239	365	282	321	307	255	281	242	276	258	225	3,274
pro se 7	22	20	26	27	33	23	21	29	20	34	29	20	304
pro se 13	2	3	5	1	5	2	5	3	1	4	4	1	36
pro se with BPP	16	11	18	19	23	15	17	21	12	23	18	13	206
% Of Bankruptcies Filed	10.76%	9.62%	8.77%	9.93%	11.84%	8.14%	10.20%	11.39%	8.68%	13.77%	12.79%	9.33%	10.38%
2018	245	249											494
pro se 7	22	20											42
pro se 13	2	2											4
pro se with BPP	16	11											27
% Of Bankruptcies Filed	9.80%	8.84%											9.31%
	Jan	Feb	Mar	Apr	May	Jun	Jul	Aug	Sep	Oct	Nov	Dec	YTD Total