

United States Bankruptcy Court  
District of New Mexico

March 1, 2018  
CM/ECF Real Time Statistics  
**February 2018 Report**

Capsule View	Feb 2018	Jan 2018	Feb 2017	% Change	
	this month	last month	this month last year	from last month	from this month last year
<b>Bankruptcies Filed</b>					
Chapter 7	230	216	220	6.48%	4.55%
Chapter 11	1	0	1	100.00%	0.00%
Chapter 12	0	0	1	0.00%	-100.00%
Chapter 13	18	29	17	-37.93%	5.88%
<b>TOTAL BANKRUPTCY FILINGS</b>	249	245	239	1.63%	4.18%
<b>Adversaries</b>					
Adversaries Filed	8	2	8	300.00%	0.00%
YEAR-TO-DATE	2018(CY)	2017(LY)	% Change		
BANKRUPTCIES FILED <sup>2</sup>			CY - LY		
Chapter 7	446	412	8.25%		
Chapter 11	1	5	-80.00%		
Chapter 12	0	2	-200.00%		
Chapter 13	47	43	9.30%		
<b><u>TOTAL FILINGS</u></b>	494	462	6.93%		
<b>BANKRUPTCIES PENDING<sup>(1)(2)</sup></b>					
Chapter 7	996	962	3.53%		
Chapter 11	59	62	-4.84%		
Chapter 12	6	7	-14.29%		
Chapter 13	786	780	0.77%		
<b><u>TOTAL PENDING</u></b>	1,847	1,811	1.99%		
<b>ADVERSARY PROCEEDINGS</b>					
Filed	10	15	-33.33%		
<b><u>TOTAL PENDING<sup>1</sup></u></b>	129	111	16.22%		
<b>AVERAGES</b>					
Chapter 7 Average Disposition <sup>3</sup> in Days	115	125	-8.00%		
Chapter 13 Average Disposition <sup>3</sup> in Days	939	926	1.40%		
Chapter 13 Average Days to Confirmation	131	119	10.08%		

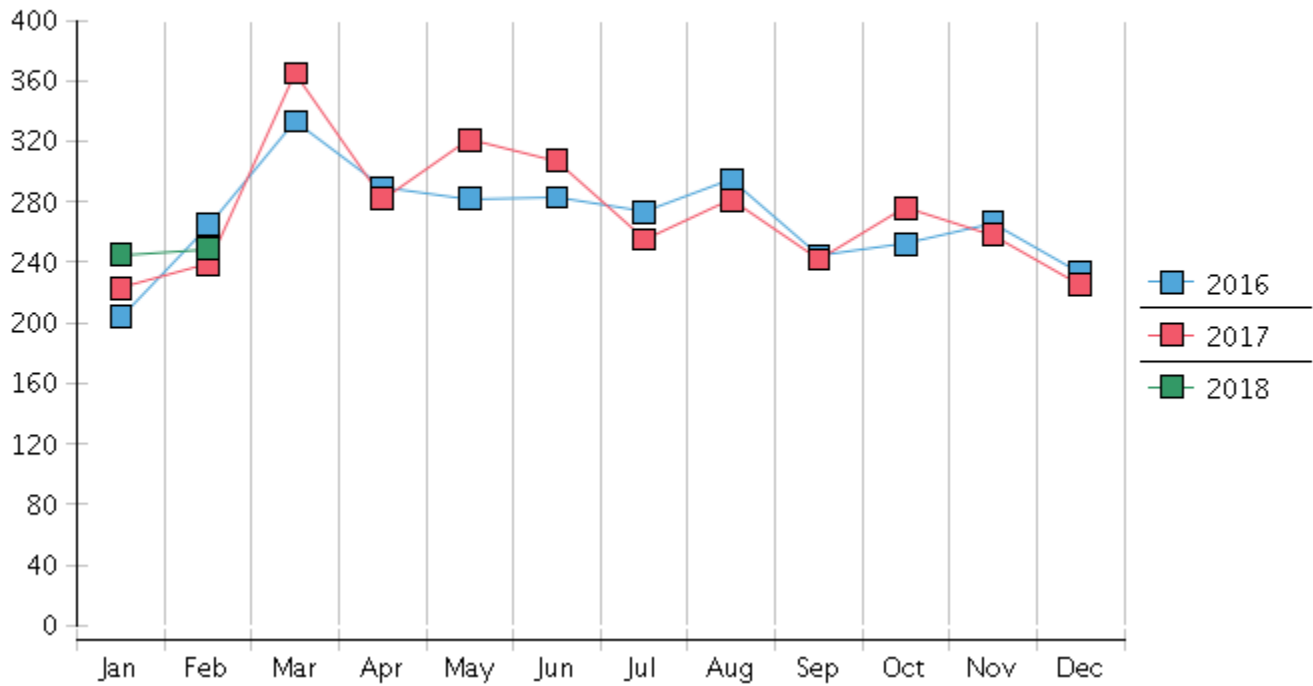
1 Pending totals are generated from CM/ECF on a time frame ending on the last day of the month.

2 Chapter breakdowns are pulled from the Dynamic CM/ECF Database and may change over time due to conversions or other case changes.

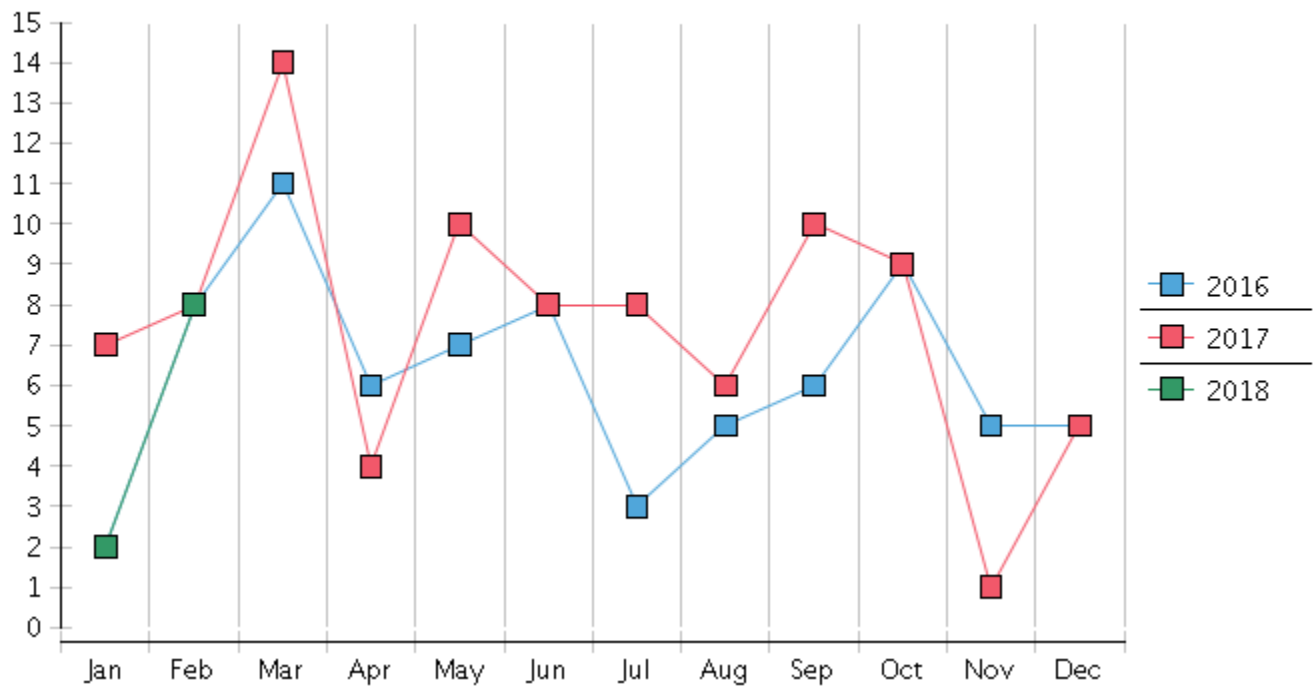
3 Average disposition represents number of days from filing to discharge/dismissal of case.



### Monthly Bankruptcy Filings



### Monthly Adversary Filings



United States Bankruptcy Court - District of New Mexico  
 Pro Se Filings

	Jan	Feb	Mar	Apr	May	Jun	Jul	Aug	Sep	Oct	Nov	Dec	YTD Total
2017	223	239	365	282	321	307	255	281	242	276	258	225	3,274
pro se 7	22	20	26	27	33	23	21	29	20	34	29	20	304
pro se 13	2	3	5	1	5	2	5	3	1	4	4	1	36
pro se with BPP	16	11	18	19	23	15	17	21	12	23	18	13	206
% Of Bankruptcies Filed	10.76%	9.62%	8.77%	9.93%	11.84%	8.14%	10.20%	11.39%	8.68%	13.77%	12.79%	9.33%	10.38%
2018	245	249											494
pro se 7	22	20											42
pro se 13	2	2											4
pro se with BPP	16	11											27
% Of Bankruptcies Filed	9.80%	8.84%											9.31%
	Jan	Feb	Mar	Apr	May	Jun	Jul	Aug	Sep	Oct	Nov	Dec	YTD Total