

United States Bankruptcy Court
District of New Mexico

January 3, 2020
CM/ECF Real Time Statistics
December 2019 Report

Capsule View	Dec 2019	Nov 2019	Dec 2018	% Change	
	this month	last month	this month last year	from last month	from this month last year
Bankruptcies Filed					
Chapter 7	198	203	187	-2.46%	5.88%
Chapter 11	0	4	2	-400%	-200%
Chapter 12	0	0	0	0%	0%
Chapter 13	31	34	26	-8.82%	19.23%
TOTAL BANKRUPTCY FILINGS	229	241	215	-4.98%	6.51%
Adversaries					
Adversaries Filed	7	4	7	75%	0%
YEAR-TO-DATE					
	2019(CY)		2018(LY)	% Change	
BANKRUPTCIES FILED²				CY - LY	
Chapter 7	2,562		2,859	-10.39%	
Chapter 11	24		19	26.32%	
Chapter 12	0		0	0%	
Chapter 13	413		357	15.69%	
<u>TOTAL FILINGS</u>	2,999		3,235	-7.3%	
BANKRUPTCIES PENDING⁽¹⁾⁽²⁾					
Chapter 7	917		1,084	-15.41%	
Chapter 11	37		38	-2.63%	
Chapter 12	4		7	-42.86%	
Chapter 13	913		828	10.27%	
<u>TOTAL PENDING</u>	1,871		1,957	-4.39%	
ADVERSARY PROCEEDINGS					
Filed	88		86	2.33%	
<u>TOTAL PENDING¹</u>	81		83	-2.41%	
AVERAGES					
Chapter 7 Average Disposition ³ in Days	120		117	2.56%	
Chapter 13 Average Disposition ³ in Days	865		985	-12.18%	
Chapter 13 Average Days to Confirmation	209		127	64.57%	

1 Pending totals are generated from CM/ECF on a time frame ending on the last day of the month.

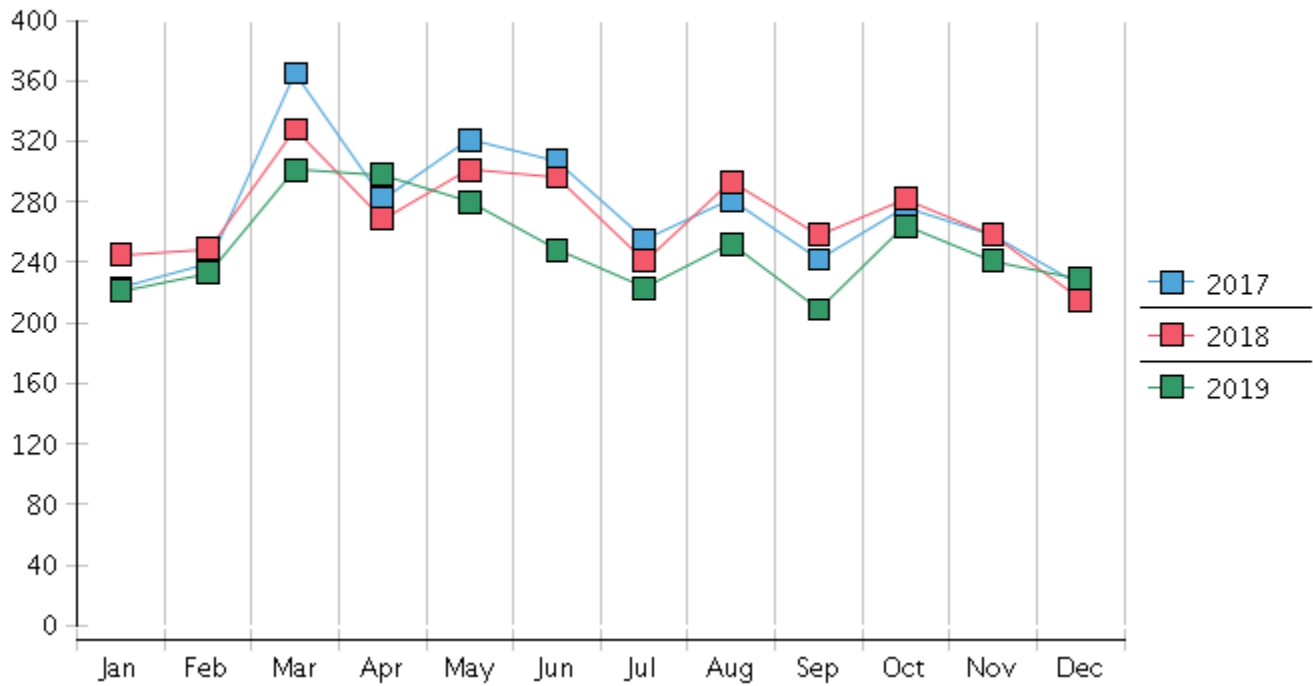
2 Chapter breakdowns are pulled from the Dynamic CM/ECF Database and may change over time due to conversions or other case changes.

3. Average disposition represents number of days from filing to discharge/dismissal of case.

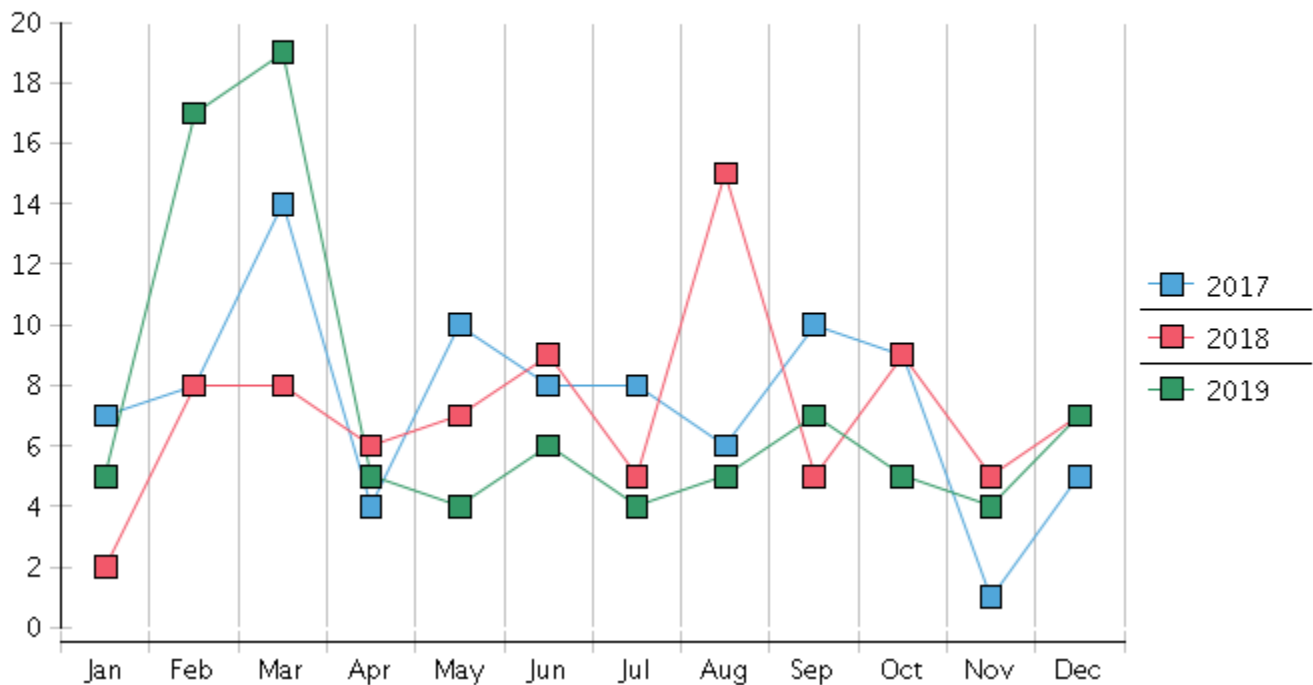
United States Bankruptcy Court - District of New Mexico
 Statistics - Year-To-Date Totals

2019	January	February	March	April	May	June	July	August	September	October	November	December	Total YTD
FILED													FILED
Chapter 7 Combined	194	196	262	258	246	198	193	212	177	225	203	198	2562
Chapter 11	0	3	2	0	4	4	1	4	2	0	4	0	24
Chapter 12	0	0	0	0	0	0	0	0	0	0	0	0	0
Chapter 13	27	34	37	40	30	46	29	36	30	39	34	31	413
Total Filed for Month	221	233	301	298	280	248	223	252	209	264	241	229	
Totals Filed Year-to-Date	221	454	755	1053	1333	1581	1804	2056	2265	2529	2770	2999	2999
CLOSED													CLOSED
Chapter 7 Combined Total	199	305	223	204	227	154	319	243	320	121	209	249	2773
Asset	1	1	4	4	2	4	8	1	6	5	2	2	40
No Asset	198	304	219	200	225	150	311	242	314	116	207	247	2733
Chapter 11	3	2	1	3	4	2	2	4	1	0	3	2	27
Chapter 12	0	1	1	1	0	0	0	0	0	0	0	0	3
Chapter 13	24	25	16	19	33	37	29	35	31	37	25	18	329
Totals Closed for Month	226	333	241	227	264	193	350	282	352	158	237	269	
Totals Closed Year-to-Date	226	559	800	1027	1291	1484	1834	2116	2468	2626	2863	3132	3132
Closing Breakdown													
Closed by Case Managers	66	58	50	53	63	56	62	69	58	61	48	38	682
Closed Automatically	160	275	191	174	201	137	288	213	294	97	189	231	2450
Percent Closed by Case Managers	29.2%	17.42%	20.75%	23.35%	23.86%	29.02%	17.71%	24.47%	16.48%	38.61%	20.25%	14.13%	21.78%
Percent Closed Automatically	70.8%	82.58%	79.25%	76.65%	76.14%	70.98%	82.29%	75.53%	83.52%	61.39%	79.75%	85.87%	78.22%
PENDING													
Chapter 7	1082	976	1016	1078	1104	1153	1028	1000	861	968	965	917	
Chapter 11	36	38	39	36	36	37	36	36	37	37	39	37	
Chapter 12	7	6	5	4	4	4	4	4	4	4	4	4	
Chapter 13	832	842	865	885	881	887	888	890	889	890	900	913	
Total Pending for Month	1957	1862	1925	2003	2025	2081	1956	1930	1791	1899	1908	1871	
Adversary Proceedings													AP
Filed	5	17	19	5	4	6	4	5	7	5	4	7	88
Closed	7	7	4	6	7	6	20	6	8	15	3	4	93
Total Adversaries Pending	81	91	106	106	103	103	87	86	86	76	78	81	

Monthly Bankruptcy Filings



Monthly Adversary Filings



United States Bankruptcy Court - District of New Mexico
Pro Se Filings

	Jan	Feb	Mar	Apr	May	Jun	Jul	Aug	Sep	Oct	Nov	Dec	YTD Total
2018	245	249	328	269	301	296	241	293	258	282	258	215	3,235
pro se 7	22	20	22	20	38	29	32	29	19	21	20	25	297
pro se 13	2	2	5	1	1	2	2	4	3	4	2	2	30
pro se with BPP	16	11	16	14	29	15	23	19	12	8	10	16	189
% Of Bankruptcies Filed	9.8%	8.84%	8.23%	7.81%	12.96%	10.47%	14.11%	11.6%	8.53%	8.87%	8.53%	12.56%	10.11%
2019	221	233	301	298	280	248	223	252	209	264	241	229	2,999
pro se 7	27	18	23	26	18	15	19	19	22	30	17	16	250
pro se 13	4	8	7	3	6	8	6	7	4	5	3	5	66
pro se with BPP	19	10	14	15	11	10	9	8	11	18	14	8	147
% Of Bankruptcies Filed	14.03%	11.16%	9.97%	9.73%	8.93%	9.27%	11.21%	10.32%	12.44%	13.26%	8.3%	9.17%	10.54%
	Jan	Feb	Mar	Apr	May	Jun	Jul	Aug	Sep	Oct	Nov	Dec	YTD Total