

United States Bankruptcy Court

District of New Mexico

January 3, 2019

CM/ECF Real Time Statistics

December 2018 Report

Capsule View	Dec 2018	Nov 2018	Dec 2017	% Change	
	this month	last month	this month last year	from last month	from this month last year
Bankruptcies Filed					
Chapter 7	187	222	198	-15.77%	-5.56%
Chapter 11	2	3	3	-33.33%	-33.33%
Chapter 12	0	0	0	0%	0%
Chapter 13	26	33	24	-21.21%	8.33%
TOTAL BANKRUPTCY FILINGS	215	258	225	-16.67%	-4.44%
Adversaries					
Adversaries Filed	7	5	5	40%	40%
YEAR-TO-DATE	2018(CY)	2017(LY)		% Change	
BANKRUPTCIES FILED ²				CY - LY	
Chapter 7	2,859	2,926		-2.29%	
Chapter 11	19	34		-44.12%	
Chapter 12	0	2		-200%	
Chapter 13	357	312		14.42%	
<u>TOTAL FILINGS</u>	3,235	3,274		-1.19%	
BANKRUPTCIES PENDING ⁽¹⁾⁽²⁾					
Chapter 7	1,015	1,039		-2.31%	
Chapter 11	58	75		-22.67%	
Chapter 12	6	6		0%	
Chapter 13	876	764		14.66%	
<u>TOTAL PENDING</u>	1,955	1,884		3.77%	
ADVERSARY PROCEEDINGS					
Filed	86	90		-4.44%	
<u>TOTAL PENDING¹</u>	83	124		-33.06%	
AVERAGES					
Chapter 7 Average Disposition ³ in Days	117	123		-4.88%	
Chapter 13 Average Disposition ³ in Days	991	1073		-7.64%	
Chapter 13 Average Days to Confirmation	128	123		4.07%	

1 Pending totals are generated from CM/ECF on a time frame ending on the last day of the month.

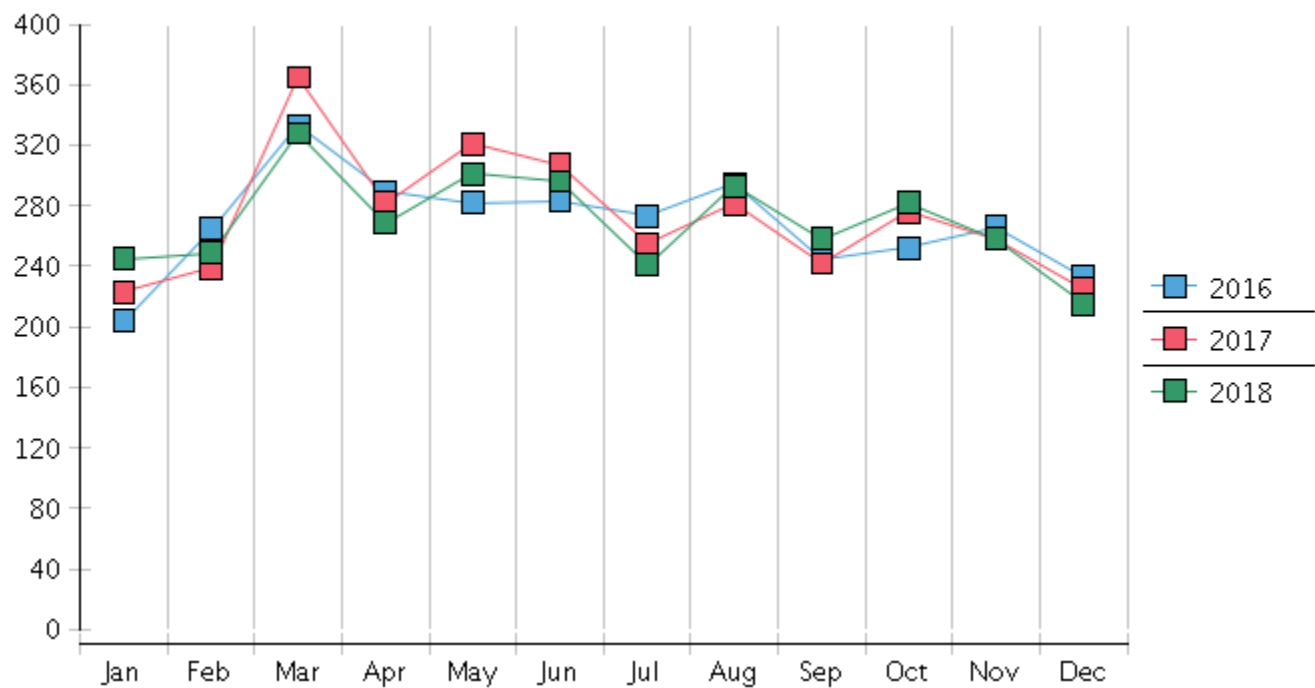
2 Chapter breakdowns are pulled from the Dynamic CM/ECF Database and may change over time due to conversions or other case changes.

3. Average disposition represents number of days from filing to discharge/dismissal of case.

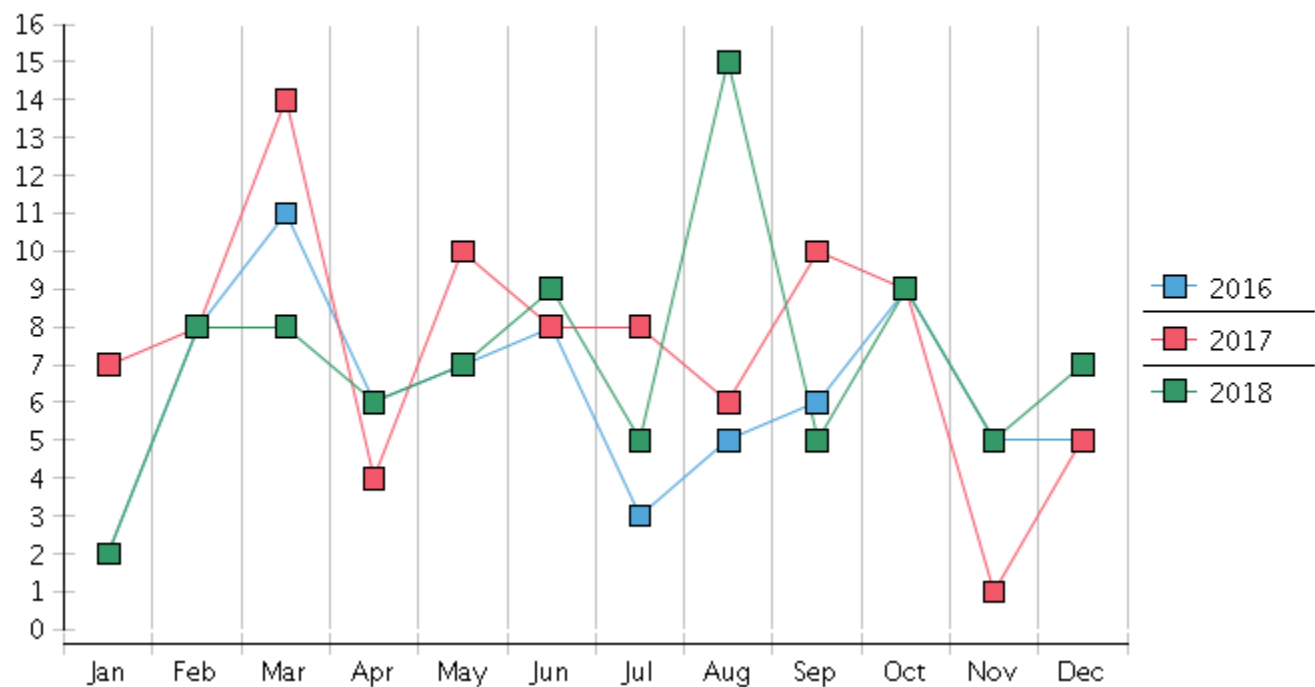
United States Bankruptcy Court - District of New Mexico
Statistics - Year-To-Date Totals

2018	January	February	March	April	May	June	July	August	September	October	November	December	Total YTD
FILED													FILED
Chapter 7 Combined	216	230	288	240	265	254	211	263	236	247	222	187	2859
Chapter 11	0	1	1	2	4	1	2	1	1	1	3	2	19
Chapter 12	0	0	0	0	0	0	0	0	0	0	0	0	0
Chapter 13	29	18	39	27	32	41	28	29	21	34	33	26	357
Total Filed for Month	245	249	328	269	301	296	241	293	258	282	258	215	
Totals Filed Year-to-Date	245	494	822	1091	1392	1688	1929	2222	2480	2762	3020	3235	3235
CLOSED													CLOSED
Chapter 7 Combined Total	237	249	202	183	266	286	296	227	250	269	209	262	2936
Asset	9	3	4	3	7	15	6	0	2	11	7	2	69
No Asset	228	246	198	180	259	271	290	227	248	258	202	260	2867
Chapter 11	2	1	3	2	5	2	2	4	2	4	2	4	33
Chapter 12	0	0	0	0	0	0	0	0	0	0	0	0	0
Chapter 13	28	20	23	18	16	19	23	25	13	15	12	22	234
Totals Closed for Month	267	270	228	203	287	307	321	256	265	288	223	288	
Totals Closed Year-to-Date	267	537	765	968	1255	1562	1883	2139	2404	2692	2915	3203	3203
Closing Breakdown													
Closed by Case Managers	52	41	48	46	49	72	43	63	40	51	42	72	619
Closed Automatically	215	229	180	157	238	235	278	193	225	237	181	216	2584
Percent Closed by Case Managers	19.48%	15.19%	21.05%	22.66%	17.07%	23.45%	13.4%	24.61%	15.09%	17.71%	18.83%	25.0%	19.33%
Percent Closed Automatically	80.52%	84.81%	78.95%	77.34%	82.93%	76.55%	86.6%	75.39%	84.91%	82.29%	81.17%	75.0%	80.67%
PENDING													
Chapter 7	1031	1008	1103	1162	1166	1143	1061	1104	1089	1072	1091	1015	
Chapter 11	73	72	69	70	67	66	65	63	63	60	59	58	
Chapter 12	6	6	6	6	6	6	6	6	6	6	6	6	
Chapter 13	753	761	775	783	800	813	819	822	834	850	870	876	
Total Pending for Month	1863	1847	1953	2021	2039	2028	1951	1995	1992	1988	2026	1955	
Adversary Proceedings													AP
Filed	2	8	8	6	7	9	5	15	5	9	5	7	86
Closed	4	2	15	4	11	8	6	3	3	14	33	25	128
Total Adversaries Pending	122	129	122	124	120	121	120	132	134	129	101	83	

Monthly Bankruptcy Filings



Monthly Adversary Filings



United States Bankruptcy Court - District of New Mexico
Pro Se Filings

	Jan	Feb	Mar	Apr	May	Jun	Jul	Aug	Sep	Oct	Nov	Dec	YTD Total
2017	223	239	365	282	321	307	255	281	242	276	258	225	3,274
pro se 7	21	20	26	27	31	23	21	28	20	34	28	20	299
pro se 13	2	3	5	1	5	2	5	3	1	4	4	1	36
pro se with BPP	15	11	18	19	22	15	17	21	12	23	18	13	204
% Of Bankruptcies Filed	10.31%	9.62%	8.77%	9.93%	11.21%	8.14%	10.2%	11.03%	8.68%	13.77%	12.4%	9.33%	10.23%
2018	245	249	328	269	301	296	241	293	258	282	258	215	3,235
pro se 7	22	20	22	20	38	29	32	29	19	21	20	25	297
pro se 13	2	2	5	1	1	2	2	4	3	4	2	2	30
pro se with BPP	16	11	16	14	29	15	23	19	12	8	10	16	189
% Of Bankruptcies Filed	9.8%	8.84%	8.23%	7.81%	12.96%	10.47%	14.11%	11.6%	8.53%	8.87%	8.53%	12.56%	10.11%
	Jan	Feb	Mar	Apr	May	Jun	Jul	Aug	Sep	Oct	Nov	Dec	YTD Total