

United States Bankruptcy Court

District of New Mexico

September 4, 2019

CM/ECF Real Time Statistics

August 2019 Report

Capsule View	Aug 2019	Jul 2019	Aug 2018	% Change	
	this month	last month	this month last year	from last month	from this month last year
Bankruptcies Filed					
Chapter 7	212	193	263	9.84%	-19.39%
Chapter 11	4	1	1	300%	300%
Chapter 12	0	0	0	0%	0%
Chapter 13	36	29	29	24.14%	24.14%
TOTAL BANKRUPTCY FILINGS	252	223	293	13%	-13.99%
Adversaries					
Adversaries Filed	5	4	15	25%	-66.67%
YEAR-TO-DATE					
	2019(CY)		2018(LY)	% Change	
BANKRUPTCIES FILED²				CY - LY	
Chapter 7	1,759		1,967	-10.57%	
Chapter 11	18		12	50%	
Chapter 12	0		0	0%	
Chapter 13	279		243	14.81%	
TOTAL FILINGS	2,056		2,222	-7.47%	
BANKRUPTCIES PENDING⁽¹⁾⁽²⁾					
Chapter 7	978		1,153	-15.18%	
Chapter 11	39		44	-11.36%	
Chapter 12	3		6	-50%	
Chapter 13	908		792	14.65%	
TOTAL PENDING	1,928		1,995	-3.36%	
ADVERSARY PROCEEDINGS					
Filed	65		60	8.33%	
TOTAL PENDING¹	86		132	-34.85%	
AVERAGES					
Chapter 7 Average Disposition ³ in Days	121		118	2.54%	
Chapter 13 Average Disposition ³ in Days	871		1041	-16.33%	
Chapter 13 Average Days to Confirmation	244		126	93.65%	

1 Pending totals are generated from CM/ECF on a time frame ending on the last day of the month.

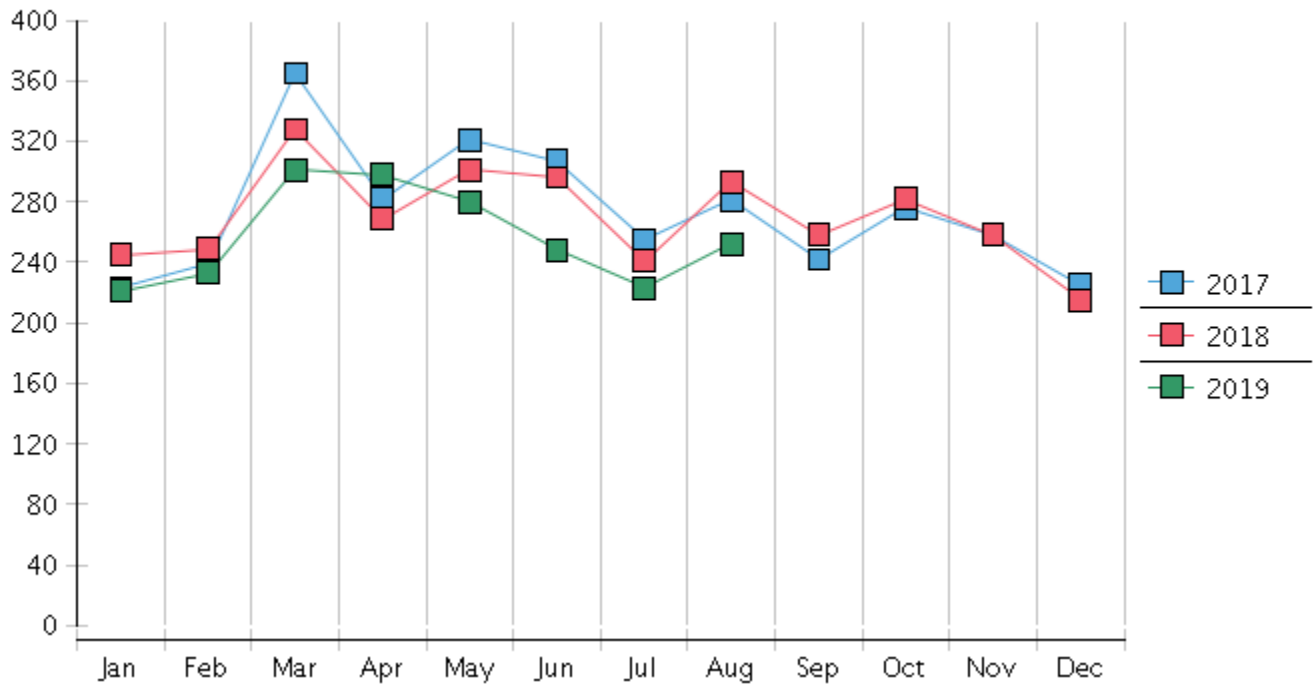
2 Chapter breakdowns are pulled from the Dynamic CM/ECF Database and may change over time due to conversions or other case changes.

3. Average disposition represents number of days from filing to discharge/dismissal of case.

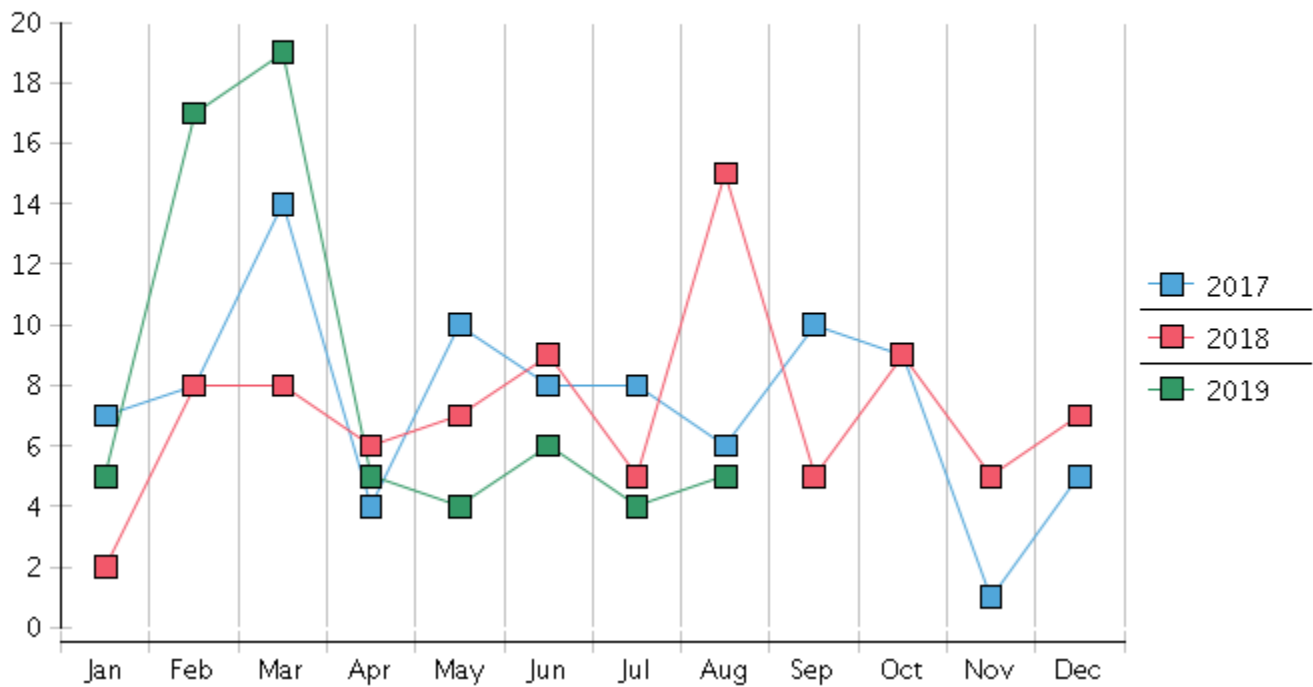
United States Bankruptcy Court - District of New Mexico
 Statistics - Year-To-Date Totals

2019	January	February	March	April	May	June	July	August	September	October	November	December	Total YTD
FILED													FILED
Chapter 7 Combined	194	196	262	258	246	198	193	212					1759
Chapter 11	0	3	2	0	4	4	1	4					18
Chapter 12	0	0	0	0	0	0	0	0					0
Chapter 13	27	34	37	40	30	46	29	36					279
Total Filed for Month	221	233	301	298	280	248	223	252					
Totals Filed Year-to-Date	221	454	755	1053	1333	1581	1804	2056					2056
CLOSED													CLOSED
Chapter 7 Combined Total	199	305	223	204	227	154	319	243					1874
Asset	1	1	4	4	2	4	8	1					25
No Asset	198	304	219	200	225	150	311	242					1849
Chapter 11	3	2	1	3	4	2	2	4					21
Chapter 12	0	1	1	1	0	0	0	0					3
Chapter 13	24	25	16	19	33	37	29	35					218
Totals Closed for Month	226	333	241	227	264	193	350	282					
Totals Closed Year-to-Date	226	559	800	1027	1291	1484	1834	2116					2116
Closing Breakdown													
Closed by Case Managers	66	58	50	53	63	56	62	69					477
Closed Automatically	160	275	191	174	201	137	288	213					1639
Percent Closed by Case Managers	29.2%	17.42%	20.75%	23.35%	23.86%	29.02%	17.71%	24.47%					22.54%
Percent Closed Automatically	70.8%	82.58%	79.25%	76.65%	76.14%	70.98%	82.29%	75.53%					77.46%
PENDING													
Chapter 7	1066	960	1000	1062	1088	1133	1007	978					
Chapter 11	38	40	41	38	38	40	39	39					
Chapter 12	6	5	4	3	3	3	3	3					
Chapter 13	845	855	878	898	894	903	905	908					
Total Pending for Month	1955	1860	1923	2001	2023	2079	1954	1928					
Adversary Proceedings													AP
Filed	5	17	19	5	4	6	4	5					65
Closed	7	7	4	6	7	6	20	6					63
Total Adversaries Pending	81	91	106	106	103	103	87	86					

Monthly Bankruptcy Filings



Monthly Adversary Filings



United States Bankruptcy Court - District of New Mexico
Pro Se Filings

	Jan	Feb	Mar	Apr	May	Jun	Jul	Aug	Sep	Oct	Nov	Dec	YTD Total
2018	245	249	328	269	301	296	241	293	258	282	258	215	3,235
pro se 7	22	20	22	20	38	29	32	29	19	21	20	25	297
pro se 13	2	2	5	1	1	2	2	4	3	4	2	2	30
pro se with BPP	16	11	16	14	29	15	23	19	12	8	10	16	189
% Of Bankruptcies Filed	9.8%	8.84%	8.23%	7.81%	12.96%	10.47%	14.11%	11.6%	8.53%	8.87%	8.53%	12.56%	10.11%
2019	221	233	301	298	280	248	223	252					2,056
pro se 7	27	18	23	26	18	15	19	19					165
pro se 13	4	8	7	3	6	8	6	7					49
pro se with BPP	19	10	14	15	11	10	9	8					96
% Of Bankruptcies Filed	14.03%	11.16%	9.97%	9.73%	8.93%	9.27%	11.21%	10.32%					10.41%
	Jan	Feb	Mar	Apr	May	Jun	Jul	Aug	Sep	Oct	Nov	Dec	YTD Total