

United States Bankruptcy Court
District of New Mexico

September 14, 2018
CM/ECF Real Time Statistics
August 2018 Report

Capsule View	Aug 2018	Jul 2018	Aug 2017	% Change	
	this month	last month	this month last year	from last month	from this month last year
Bankruptcies Filed					
Chapter 7	263	211	254	24.64%	3.54%
Chapter 11	1	2	3	-50%	-66.67%
Chapter 12	0	0	0	0%	0%
Chapter 13	29	28	24	3.57%	20.83%
TOTAL BANKRUPTCY FILINGS	293	241	281	21.58%	4.27%
Adversaries					
Adversaries Filed	15	5	6	200%	150%
YEAR-TO-DATE					
	2018(CY)		2017(LY)	% Change	
BANKRUPTCIES FILED²				CY - LY	
Chapter 7	1,967		2,048	-3.96%	
Chapter 11	12		22	-45.45%	
Chapter 12	0		2	-200%	
Chapter 13	243		201	20.9%	
<u>TOTAL FILINGS</u>	2,222		2,273	-2.24%	
BANKRUPTCIES PENDING⁽¹⁾⁽²⁾					
Chapter 7	1,084		1,153	-5.98%	
Chapter 11	64		74	-13.51%	
Chapter 12	6		6	0%	
Chapter 13	841		758	10.95%	
<u>TOTAL PENDING</u>	1,995		1,991	0.2%	
ADVERSARY PROCEEDINGS					
Filed	60		65	-7.69%	
<u>TOTAL PENDING¹</u>	132		135	-2.22%	
AVERAGES					
Chapter 7 Average Disposition ³ in Days	118		124	-4.84%	
Chapter 13 Average Disposition ³ in Days	1049		1065	-1.5%	
Chapter 13 Average Days to Confirmation	126		122	3.28%	

1 Pending totals are generated from CM/ECF on a time frame ending on the last day of the month.

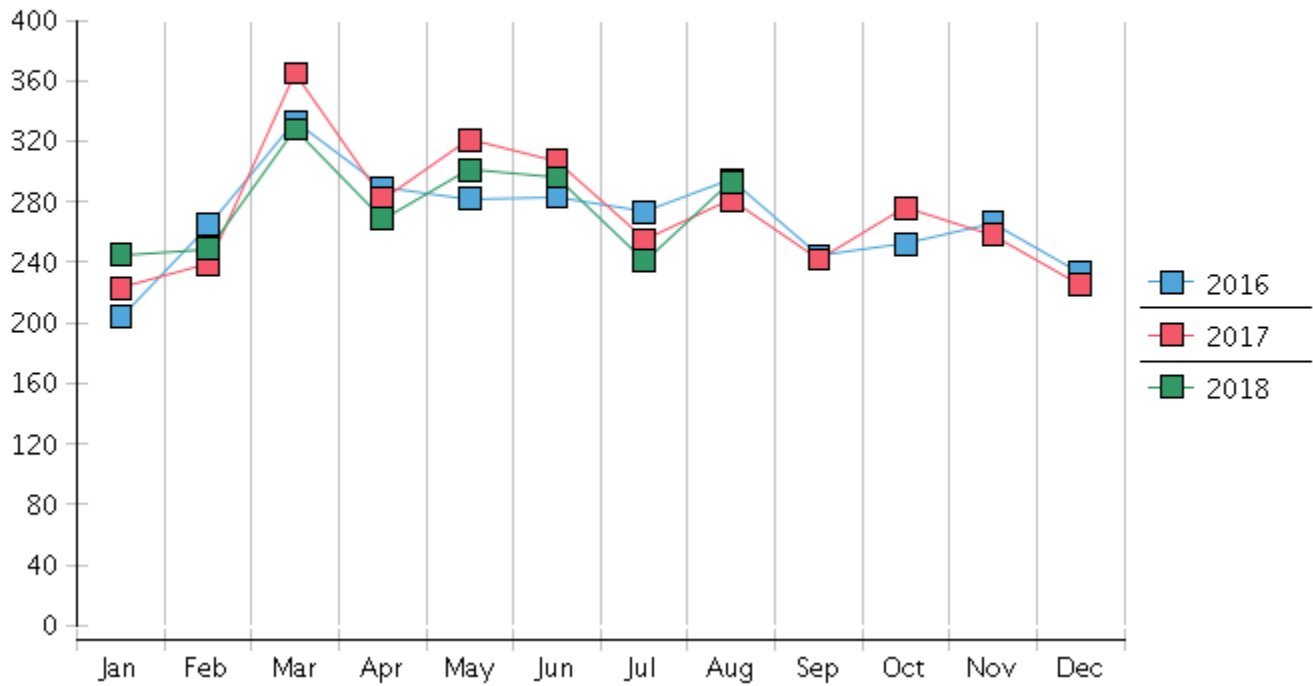
2 Chapter breakdowns are pulled from the Dynamic CM/ECF Database and may change over time due to conversions or other case changes.

3. Average disposition represents number of days from filing to discharge/dismissal of case.

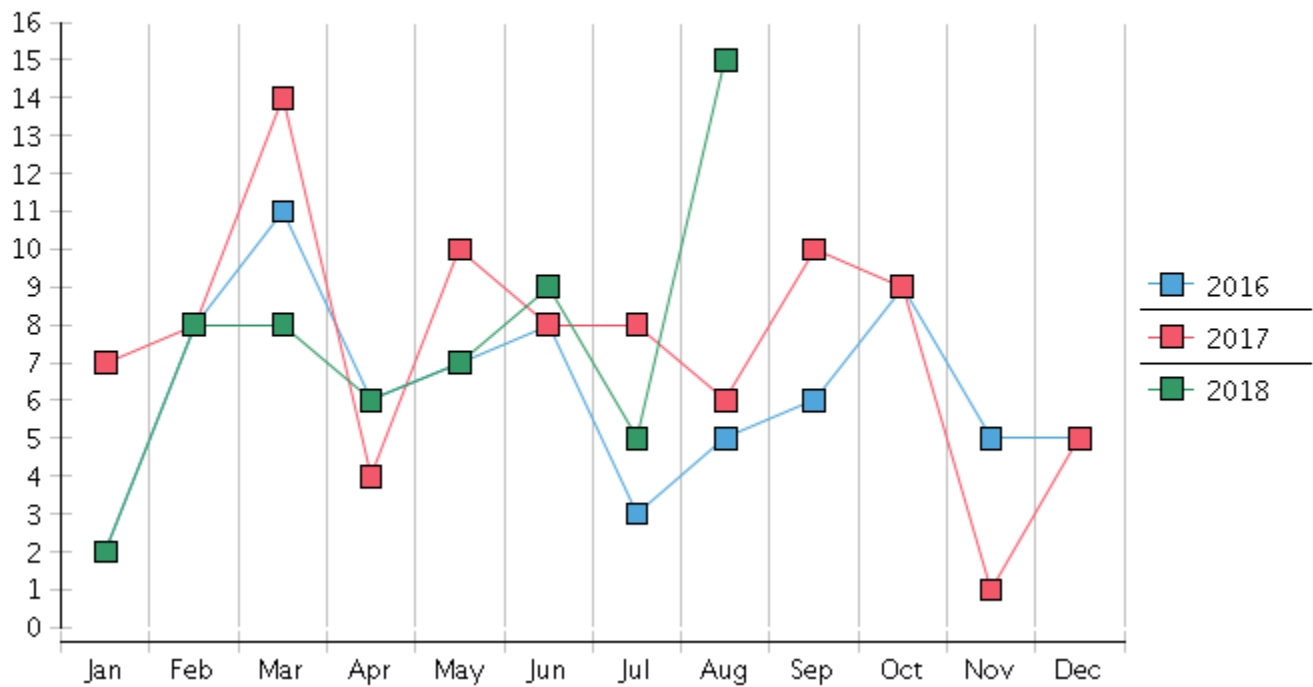
United States Bankruptcy Court - District of New Mexico
 Statistics - Year-To-Date Totals

2018	January	February	March	April	May	June	July	August	September	October	November	December	Total YTD
FILED													FILED
Chapter 7 Combined	216	230	288	240	265	254	211	263					1967
Chapter 11	0	1	1	2	4	1	2	1					12
Chapter 12	0	0	0	0	0	0	0	0					0
Chapter 13	29	18	39	27	32	41	28	29					243
Total Filed for Month	245	249	328	269	301	296	241	293					
Totals Filed Year-to-Date	245	494	822	1091	1392	1688	1929	2222					2222
CLOSED													CLOSED
Chapter 7 Combined Total	237	249	202	183	266	286	296	227					1946
Asset	9	3	4	3	7	15	6	0					47
No Asset	228	246	198	180	259	271	290	227					1899
Chapter 11	2	1	3	2	5	2	2	4					21
Chapter 12	0	0	0	0	0	0	0	0					0
Chapter 13	28	20	23	18	16	19	23	25					172
Totals Closed for Month	267	270	228	203	287	307	321	256					
Totals Closed Year-to-Date	267	537	765	968	1255	1562	1883	2139					2139
Closing Breakdown													
Closed by Case Managers	52	41	48	46	49	72	43	63					414
Closed Automatically	215	229	180	157	238	235	278	193					1725
Percent Closed by Case Managers	19.48%	15.19%	21.05%	22.66%	17.07%	23.45%	13.4%	24.61%					19.35%
Percent Closed Automatically	80.52%	84.81%	78.95%	77.34%	82.93%	76.55%	86.6%	75.39%					80.65%
PENDING													
Chapter 7	1022	999	1093	1150	1153	1127	1043	1084					
Chapter 11	74	73	70	71	68	67	66	64					
Chapter 12	6	6	6	6	6	6	6	6					
Chapter 13	761	769	784	794	812	828	836	841					
Total Pending for Month	1863	1847	1953	2021	2039	2028	1951	1995					
Adversary Proceedings													AP
Filed	2	8	8	6	7	9	5	15					60
Closed	4	2	15	4	11	8	6	3					53
Total Adversaries Pending	122	129	122	124	120	121	120	132					

Monthly Bankruptcy Filings



Monthly Adversary Filings



United States Bankruptcy Court - District of New Mexico
Pro Se Filings

	Jan	Feb	Mar	Apr	May	Jun	Jul	Aug	Sep	Oct	Nov	Dec	YTD Total
2017	223	239	365	282	321	307	255	281	242	276	258	225	3,274
pro se 7	21	20	26	27	31	23	21	28	20	34	28	20	299
pro se 13	2	3	5	1	5	2	5	3	1	4	4	1	36
pro se with BPP	15	11	18	19	22	15	17	21	12	23	18	13	204
% Of Bankruptcies Filed	10.31%	9.62%	8.77%	9.93%	11.21%	8.14%	10.2%	11.03%	8.68%	13.77%	12.4%	9.33%	10.23%
2018	245	249	328	269	301	296	241	293					2,222
pro se 7	22	20	22	20	38	29	32	29					212
pro se 13	2	2	5	1	1	2	2	4					19
pro se with BPP	16	11	16	14	29	15	23	19					143
% Of Bankruptcies Filed	9.8%	8.84%	8.23%	7.81%	12.96%	10.47%	14.11%	11.6%					10.4%
	Jan	Feb	Mar	Apr	May	Jun	Jul	Aug	Sep	Oct	Nov	Dec	YTD Total