

United States Bankruptcy Court
District of New Mexico

May 1, 2020

CM/ECF Real Time Statistics

April 2020 Report

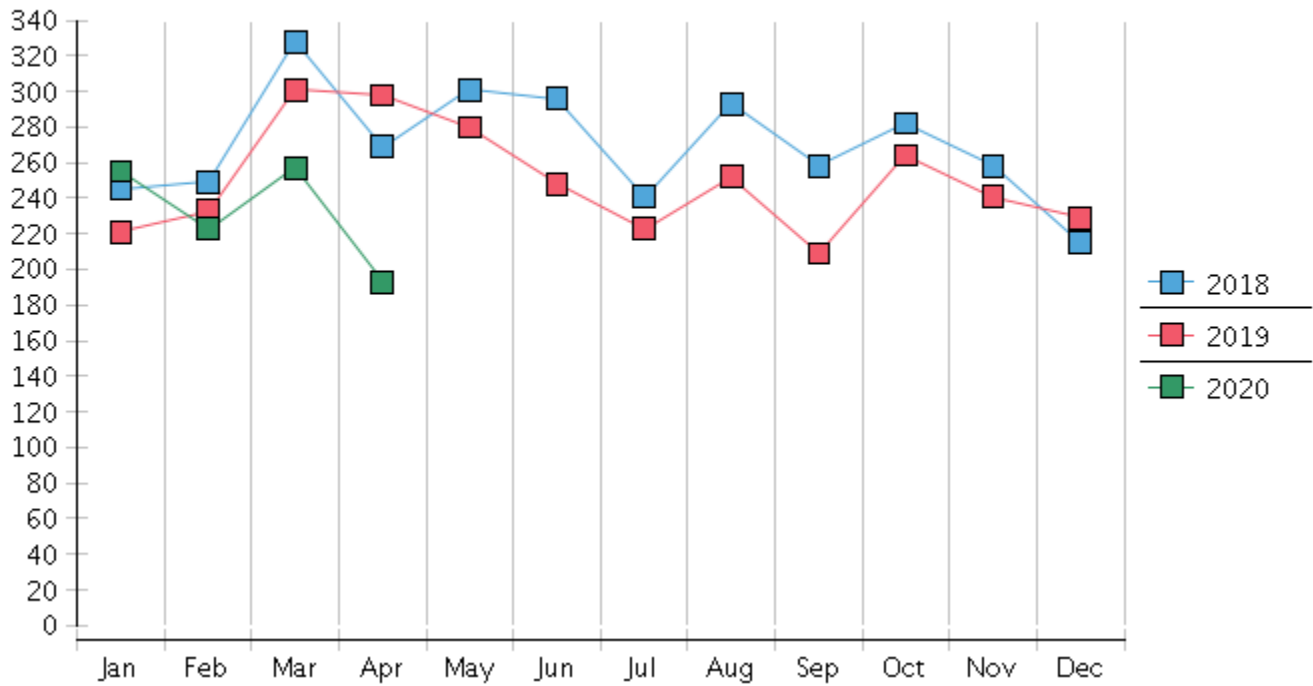
Capsule View	Apr 2020	Mar 2020	Apr 2019	% Change	
	this month	last month	this month last year	from last month	from this month last year
Bankruptcies Filed					
Chapter 7	168	230	258	-26.96%	-34.88%
Chapter 11	4	2	0	100%	400%
Chapter 12	0	0	0	0%	0%
Chapter 13	21	25	40	-16%	-47.5%
TOTAL BANKRUPTCY FILINGS	193	257	298	-24.9%	-35.23%
Adversaries					
Adversaries Filed	3	8	5	-62.5%	-40%
YEAR-TO-DATE	2020(CY)	2019(LY)	% Change		
BANKRUPTCIES FILED²			CY - LY		
Chapter 7	817	910	-10.22%		
Chapter 11	7	5	40%		
Chapter 12	0	0	0%		
Chapter 13	104	138	-24.64%		
<u>TOTAL FILINGS</u>	928	1,053	-11.87%		
BANKRUPTCIES PENDING⁽¹⁾⁽²⁾					
Chapter 7	949	1,089	-12.86%		
Chapter 11	35	36	-2.78%		
Chapter 12	3	4	-25%		
Chapter 13	900	874	2.97%		
<u>TOTAL PENDING</u>	1,887	2,003	-5.79%		
ADVERSARY PROCEEDINGS					
Filed	27	46	-41.3%		
<u>TOTAL PENDING¹</u>	75	106	-29.25%		
AVERAGES					
Chapter 7 Average Disposition ³ in Days	123	124	-0.81%		
Chapter 13 Average Disposition ³ in Days	859	768	11.85%		
Chapter 13 Average Days to Confirmation	140	138	1.45%		

1 Pending totals are generated from CM/ECF on a time frame ending on the last day of the month.

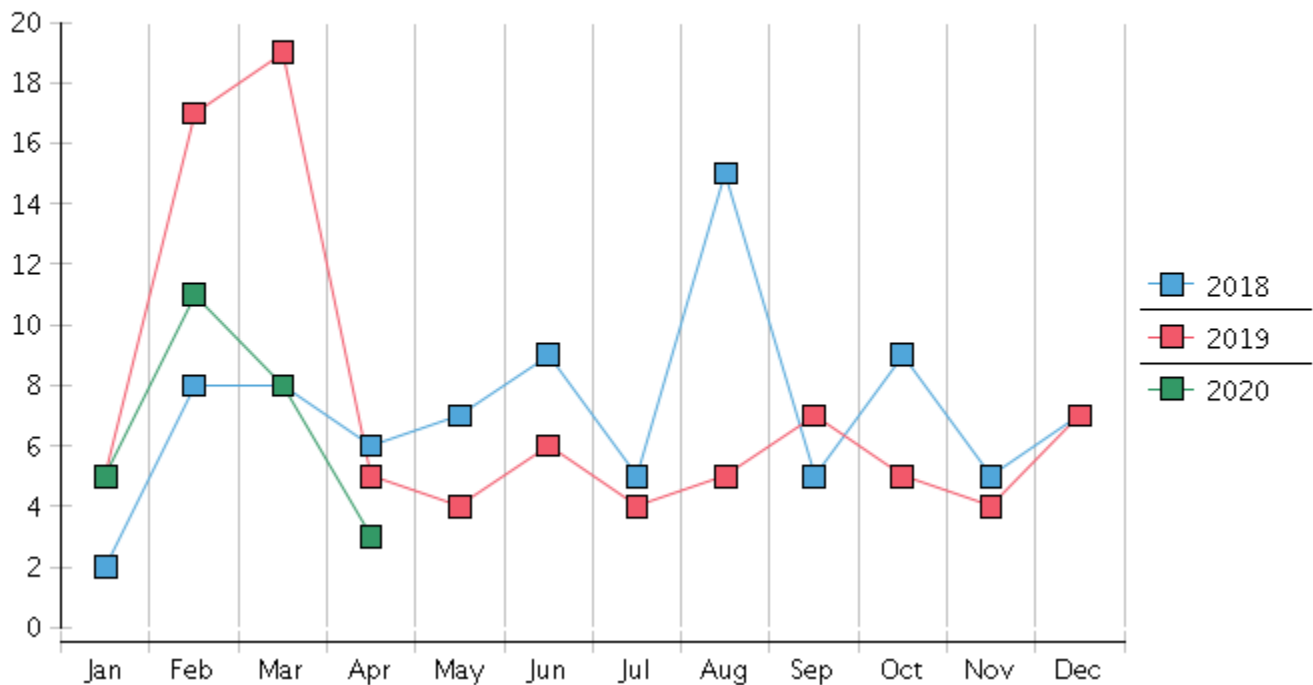
2 Chapter breakdowns are pulled from the Dynamic CM/ECF Database and may change over time due to conversions or other case changes.

3. Average disposition represents number of days from filing to discharge/dismissal of case.

Monthly Bankruptcy Filings



Monthly Adversary Filings



United States Bankruptcy Court - District of New Mexico
 Pro Se Filings

	Jan	Feb	Mar	Apr	May	Jun	Jul	Aug	Sep	Oct	Nov	Dec	YTD Total
2019	221	233	301	298	280	248	223	252	209	264	241	229	2,999
pro se 7	28	18	23	26	18	15	19	19	22	30	17	16	251
pro se 13	3	8	7	3	6	8	6	7	4	5	3	5	65
pro se with BPP	19	10	14	15	11	10	9	8	11	18	14	8	147
% Of Bankruptcies Filed	14.03%	11.16%	9.97%	9.73%	8.93%	9.27%	11.21%	10.32%	12.44%	13.26%	8.3%	9.17%	10.54%
2020	255	223	257	193									928
pro se 7	30	20	26	11									87
pro se 13	7	4	1	0									12
pro se with BPP	13	10	15	2									40
% Of Bankruptcies Filed	14.51%	10.76%	10.51%	5.7%									10.67%
	Jan	Feb	Mar	Apr	May	Jun	Jul	Aug	Sep	Oct	Nov	Dec	YTD Total