

United States Bankruptcy Court  
District of New Mexico

May 1, 2019

CM/ECF Real Time Statistics

**April 2019 Report**

Capsule View	Apr 2019	Mar 2019	Apr 2018	% Change	
	this month	last month	this month last year	from last month	from this month last year
<b>Bankruptcies Filed</b>					
Chapter 7	258	262	240	-1.53%	7.5%
Chapter 11	0	2	2	-200%	-200%
Chapter 12	0	0	0	0%	0%
Chapter 13	40	37	27	8.11%	48.15%
<b>TOTAL BANKRUPTCY FILINGS</b>	298	301	269	-1%	10.78%
<b>Adversaries</b>					
Adversaries Filed	5	19	6	-73.68%	-16.67%
YEAR-TO-DATE	2019(CY)	2018(LY)	% Change		
BANKRUPTCIES FILED <sup>2</sup>			CY - LY		
Chapter 7	910	974	-6.57%		
Chapter 11	5	4	25%		
Chapter 12	0	0	0%		
Chapter 13	138	113	22.12%		
<b>TOTAL FILINGS</b>	1,053	1,091	-3.48%		
<b>BANKRUPTCIES PENDING<sup>(1)(2)</sup></b>					
Chapter 7	1,051	1,197	-12.2%		
Chapter 11	39	53	-26.42%		
Chapter 12	3	6	-50%		
Chapter 13	908	765	18.69%		
<b>TOTAL PENDING</b>	2,001	2,021	-0.99%		
<b>ADVERSARY PROCEEDINGS</b>					
Filed	45	24	87.5%		
<b>TOTAL PENDING<sup>1</sup></b>	105	124	-15.32%		
<b>AVERAGES</b>					
Chapter 7 Average Disposition <sup>3</sup> in Days	124	114	8.77%		
Chapter 13 Average Disposition <sup>3</sup> in Days	760	1022	-25.64%		
Chapter 13 Average Days to Confirmation	138	140	-1.43%		

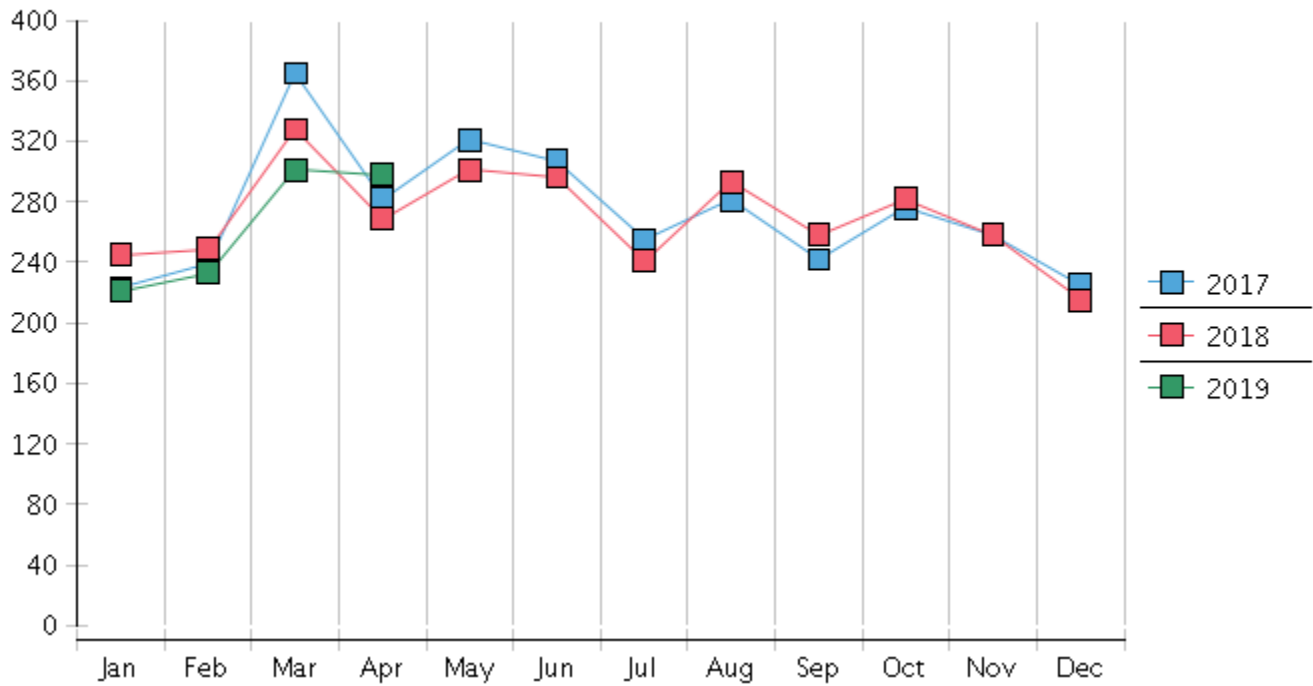
1 Pending totals are generated from CM/ECF on a time frame ending on the last day of the month.

2 Chapter breakdowns are pulled from the Dynamic CM/ECF Database and may change over time due to conversions or other case changes.

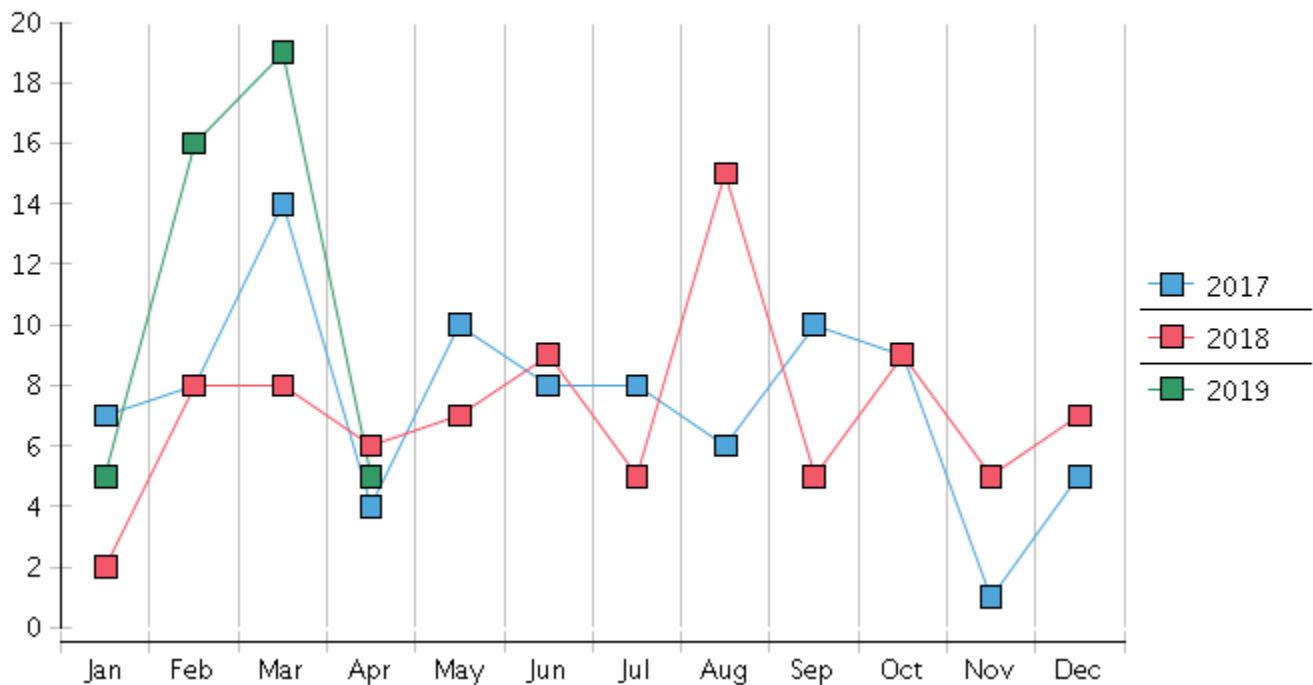
3. Average disposition represents number of days from filing to discharge/dismissal of case.



### Monthly Bankruptcy Filings



### Monthly Adversary Filings



United States Bankruptcy Court - District of New Mexico  
Pro Se Filings

	Jan	Feb	Mar	Apr	May	Jun	Jul	Aug	Sep	Oct	Nov	Dec	YTD Total
2018	245	249	328	269	301	296	241	293	258	282	258	215	3,235
pro se 7	22	20	22	20	38	29	32	29	19	21	20	25	297
pro se 13	2	2	5	1	1	2	2	4	3	4	2	2	30
pro se with BPP	16	11	16	14	29	15	23	19	12	8	10	16	189
% Of Bankruptcies Filed	9.8%	8.84%	8.23%	7.81%	12.96%	10.47%	14.11%	11.6%	8.53%	8.87%	8.53%	12.56%	10.11%
2019	221	233	301	298									1,053
pro se 7	27	18	23	26									94
pro se 13	4	8	7	3									22
pro se with BPP	19	10	14	15									58
% Of Bankruptcies Filed	14.03%	11.16%	9.97%	9.73%									11.02%
	Jan	Feb	Mar	Apr	May	Jun	Jul	Aug	Sep	Oct	Nov	Dec	YTD Total