

United States Bankruptcy Court  
District of New Mexico

May 1, 2018

CM/ECF Real Time Statistics

**April 2018 Report**

Capsule View	Apr 2018	Mar 2018	Apr 2017	% Change	
	this month	last month	this month last year	from last month	from this month last year
<b>Bankruptcies Filed</b>					
Chapter 7	240	288	259	-16.67%	-7.34%
Chapter 11	2	1	0	100%	200%
Chapter 12	0	0	0	0%	0%
Chapter 13	27	39	23	-30.77%	17.39%
<b>TOTAL BANKRUPTCY FILINGS</b>	269	328	282	-17.99%	-4.61%
<b>Adversaries</b>					
Adversaries Filed	6	8	4	-25%	50%
YEAR-TO-DATE	2018(CY)	2017(LY)	% Change		
<b>BANKRUPTCIES FILED<sup>2</sup></b>			<b>CY - LY</b>		
Chapter 7	974	998	-2.4%		
Chapter 11	4	11	-63.64%		
Chapter 12	0	2	-200%		
Chapter 13	113	98	15.31%		
<b><u>TOTAL FILINGS</u></b>	1,091	1,109	-1.62%		
<b>BANKRUPTCIES PENDING<sup>(1)(2)</sup></b>					
Chapter 7	1,130	1,167	-3.17%		
Chapter 11	74	70	5.71%		
Chapter 12	6	7	-14.29%		
Chapter 13	811	783	3.58%		
<b><u>TOTAL PENDING</u></b>	2,021	2,027	-0.3%		
<b>ADVERSARY PROCEEDINGS</b>					
Filed	24	33	-27.27%		
<b><u>TOTAL PENDING<sup>1</sup></u></b>	124	124	0%		
<b>AVERAGES</b>					
Chapter 7 Average Disposition <sup>3</sup> in Days	114	124	-8.06%		
Chapter 13 Average Disposition <sup>3</sup> in Days	1022	996	2.61%		
Chapter 13 Average Days to Confirmation	139	122	13.93%		

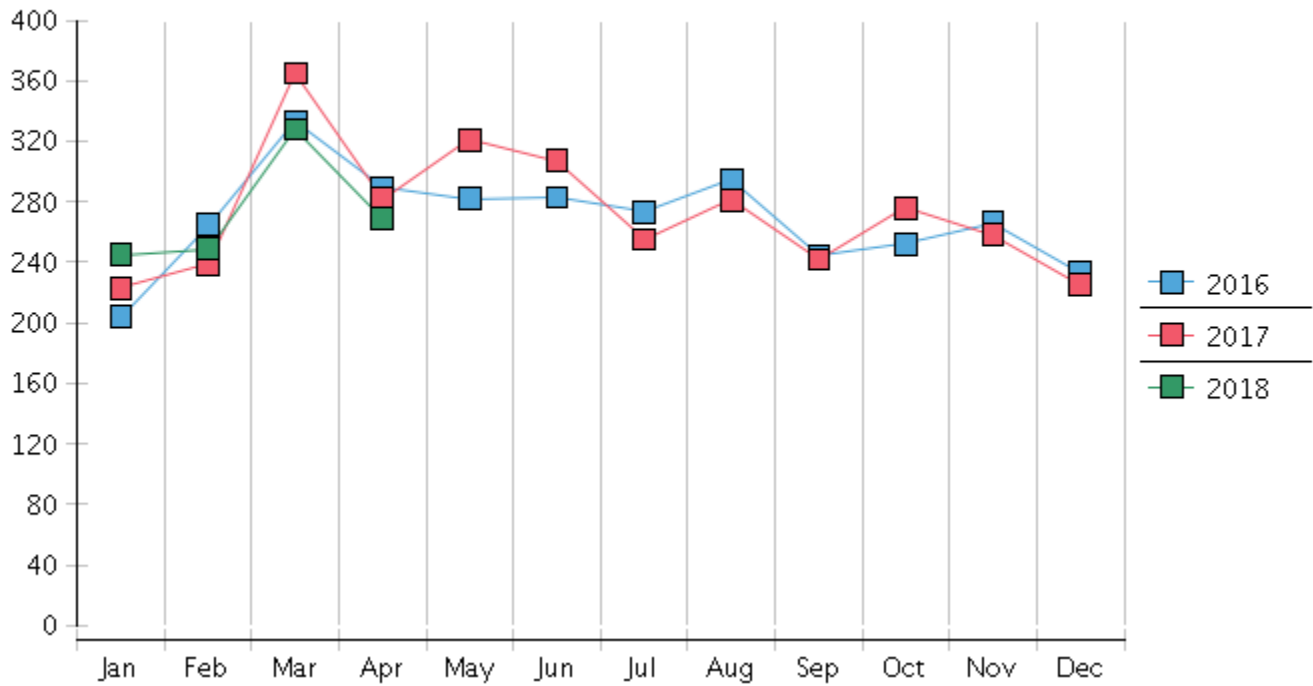
1 Pending totals are generated from CM/ECF on a time frame ending on the last day of the month.

2 Chapter breakdowns are pulled from the Dynamic CM/ECF Database and may change over time due to conversions or other case changes.

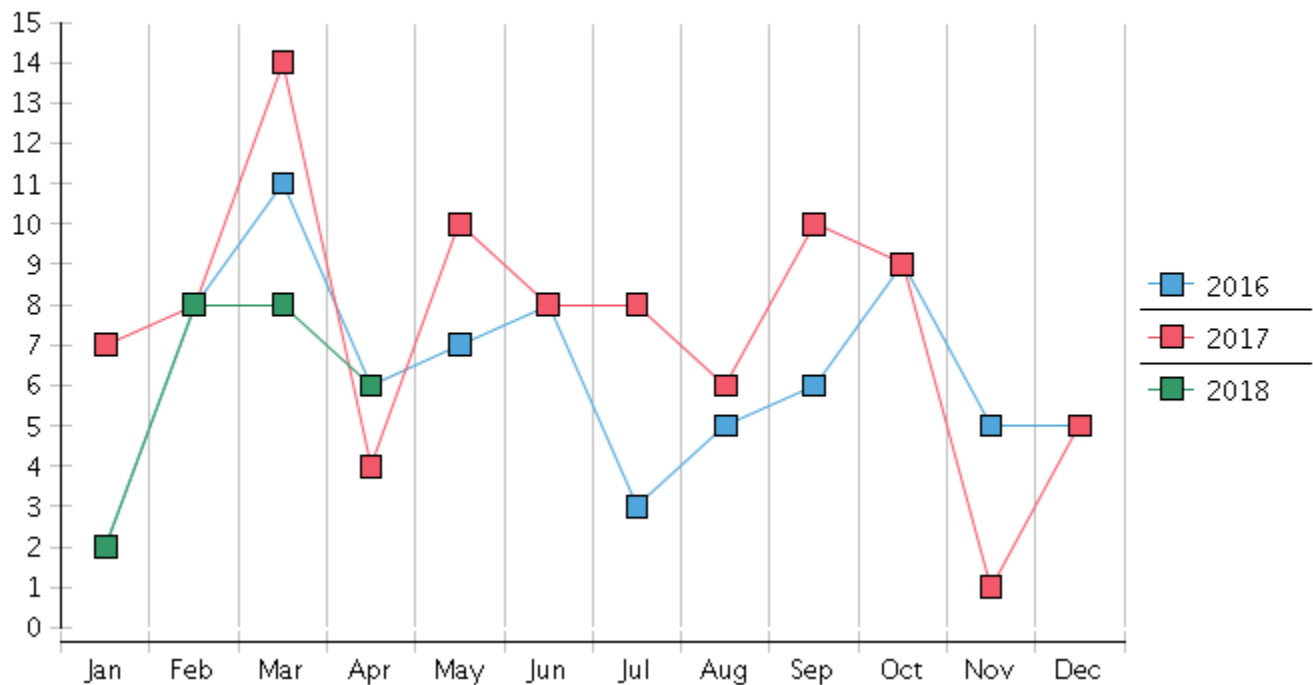
3. Average disposition represents number of days from filing to discharge/dismissal of case.



### Monthly Bankruptcy Filings



### Monthly Adversary Filings



United States Bankruptcy Court - District of New Mexico  
Pro Se Filings

	Jan	Feb	Mar	Apr	May	Jun	Jul	Aug	Sep	Oct	Nov	Dec	YTD Total
2017	223	239	365	282	321	307	255	281	242	276	258	225	3,274
pro se 7	21	20	26	27	31	23	21	28	20	34	28	20	299
pro se 13	2	3	5	1	5	2	5	3	1	4	4	1	36
pro se with BPP	15	11	18	19	22	15	17	21	12	23	18	13	204
% Of Bankruptcies Filed	10.31%	9.62%	8.77%	9.93%	11.21%	8.14%	10.2%	11.03%	8.68%	13.77%	12.4%	9.33%	10.23%
2018	245	249	328	269									1,091
pro se 7	22	20	22	20									84
pro se 13	2	2	5	1									10
pro se with BPP	16	11	16	14									57
% Of Bankruptcies Filed	9.8%	8.84%	8.23%	7.81%									8.62%
	Jan	Feb	Mar	Apr	May	Jun	Jul	Aug	Sep	Oct	Nov	Dec	YTD Total